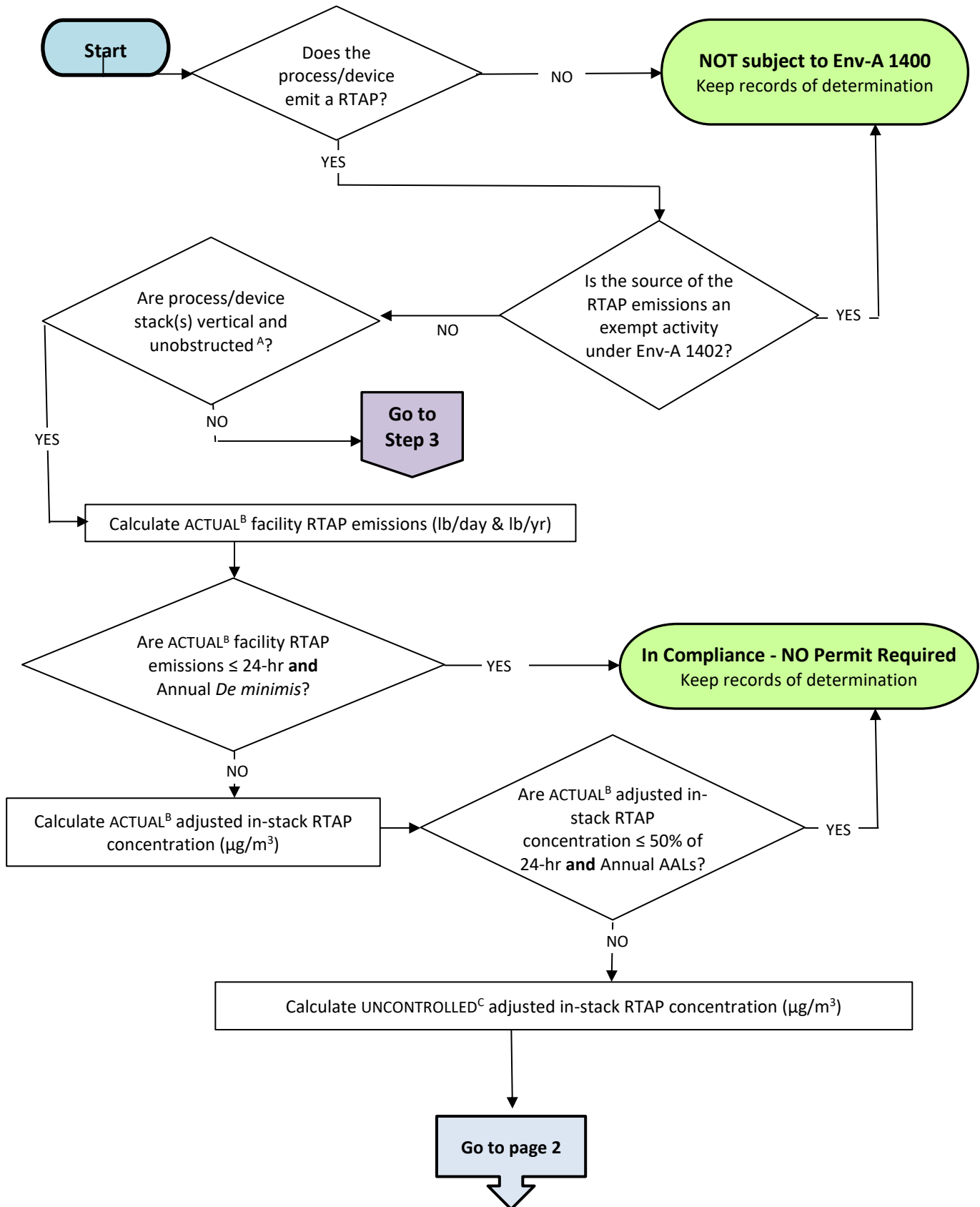
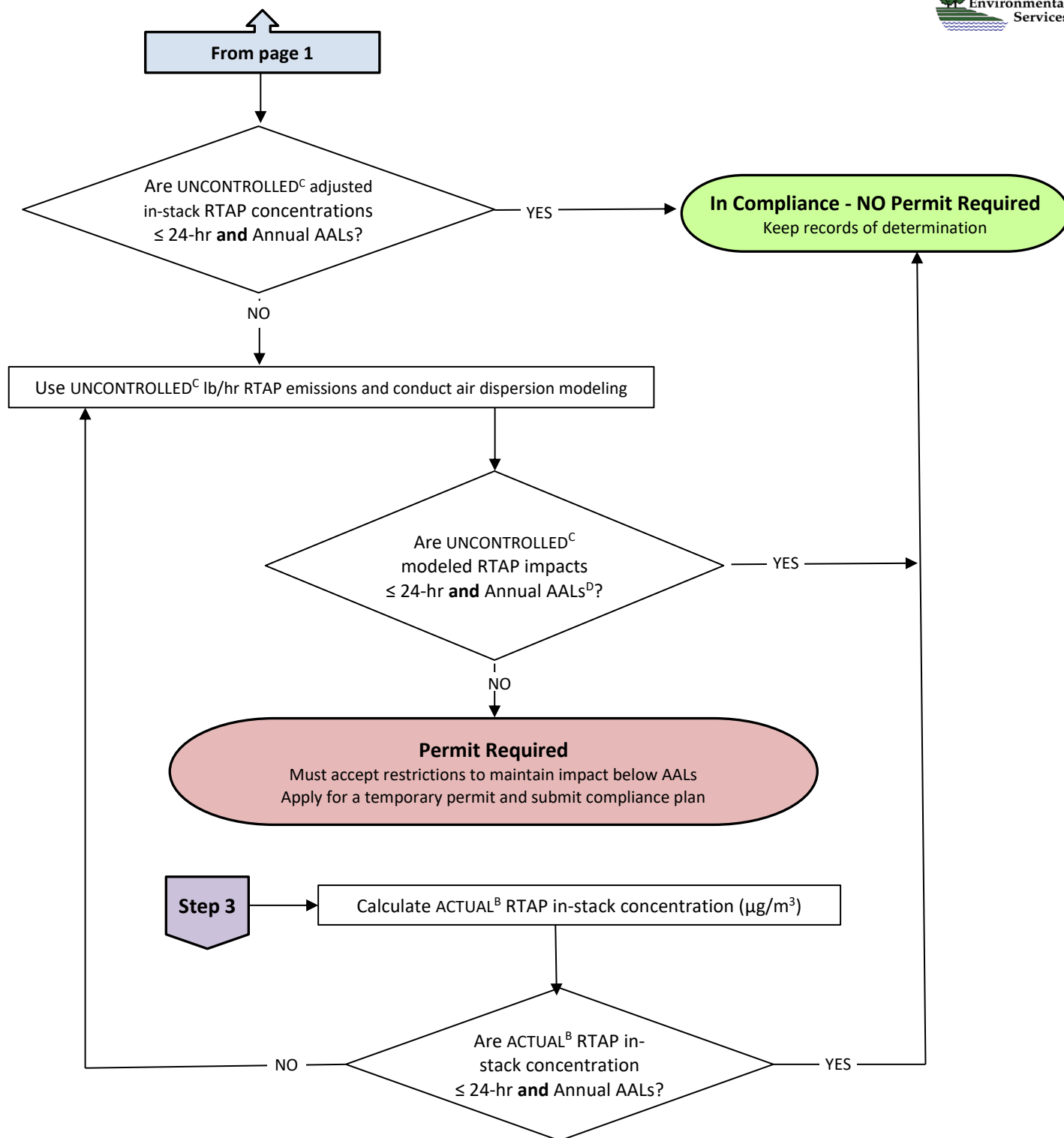


# Env-A 1400 Compliance Determination Flow Chart





<sup>A</sup> “Unobstructed” means the exhaust stack extends at least 2 feet higher than any roofline within 10 feet of the exhaust stack exit, measured horizontally. (Env-A 105.42)

<sup>B</sup> ACTUAL emissions are calculated on an uncontrolled basis.

<sup>C</sup> “UNCONTROLLED” means any emission of a RTAP from a device or process at a stationary source that is not subject to treatment or removal by pollution control equipment prior to being emitted to the ambient air, or is emitted to the ambient air in amounts which have not been limited by conditions in an enforceable permit or document.

<sup>D</sup> If compliance cannot be demonstrated using this method, the Facility may submit a request for approval of an alternative method as specified in Env-A 1404.06.