



Town of Wilton Storm Water

RCAP GIS Services
USDA Funded Project

Erick Toledo
NH State Lead
RCAP Solutions

RCAP *Solutions*





GIS Benefits

Efficiency & productive field work

Ability to view & track trends

Mobile applications for daily workflows

RCAP training & support

Increase use of updated maps

Cost-effective for small rural utilities

RCAP *Solutions*



GIS Services DW, WW & SW

GPS Data Collection

ESRI ArcGIS Online

ESRI Collector & Mobile App

Asset Management Plans

Map printing & scanning

GIS & AM Training





GIS Education & Training

Systems Operations (Mapping & Energy Audits)

Asset Management for DW & WW Systems





Town of Wilton



Dec 2020 Meeting Coordination

Feb 2021 Planning before Spring



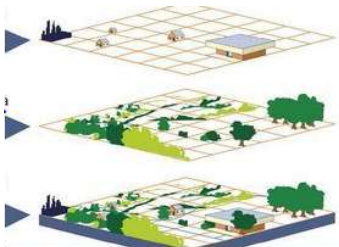
Aug 2021 Mapping Review (Spring/Summer)

Sept 2021 Field Data Collection



Oct 2021 Data Integration

Nov 2021 Project Closed



Coordination

Town of Wilton & RCAP

The Problem

Scope of work

Expectations

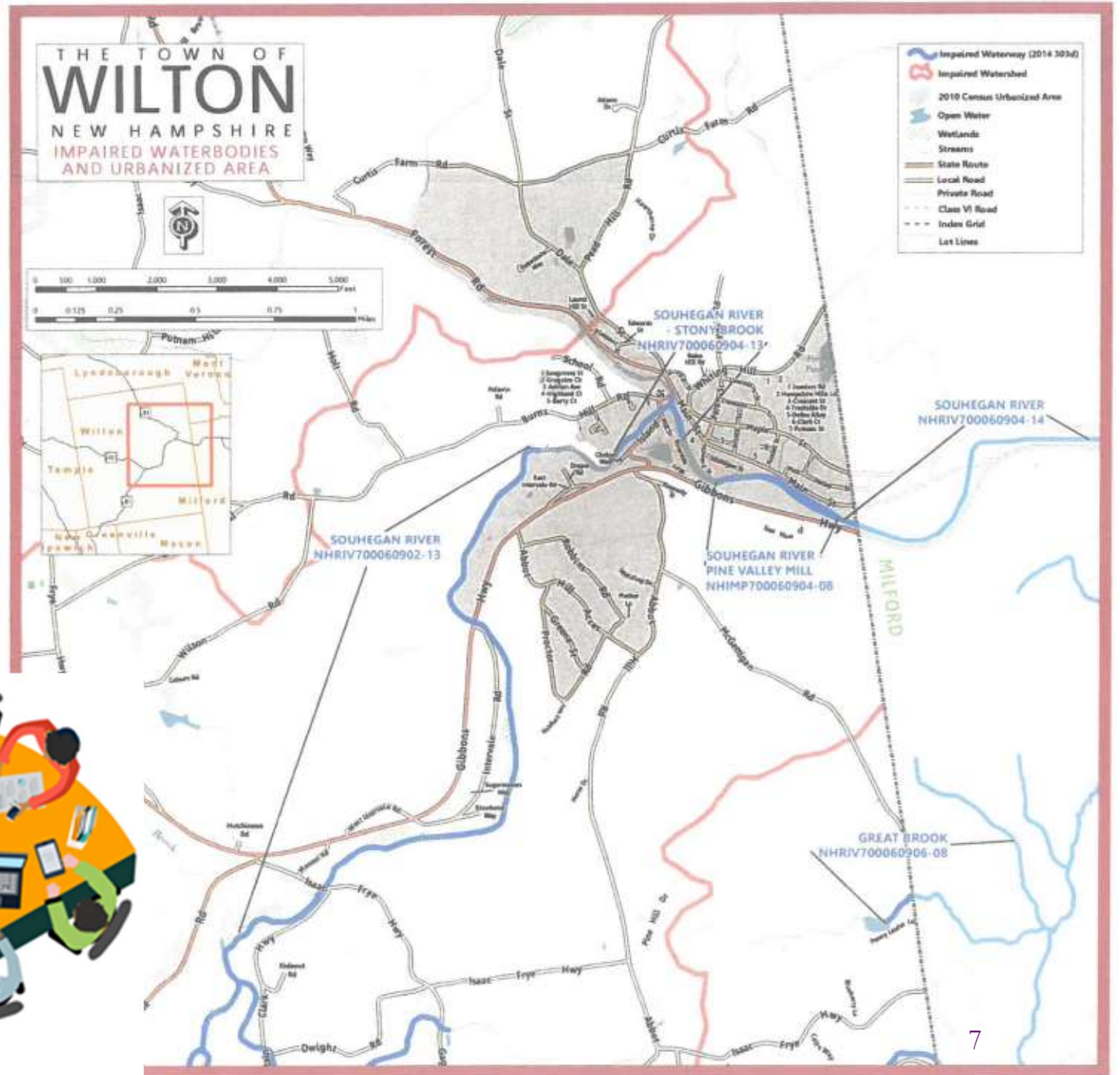
Agreement

TMF Assessment

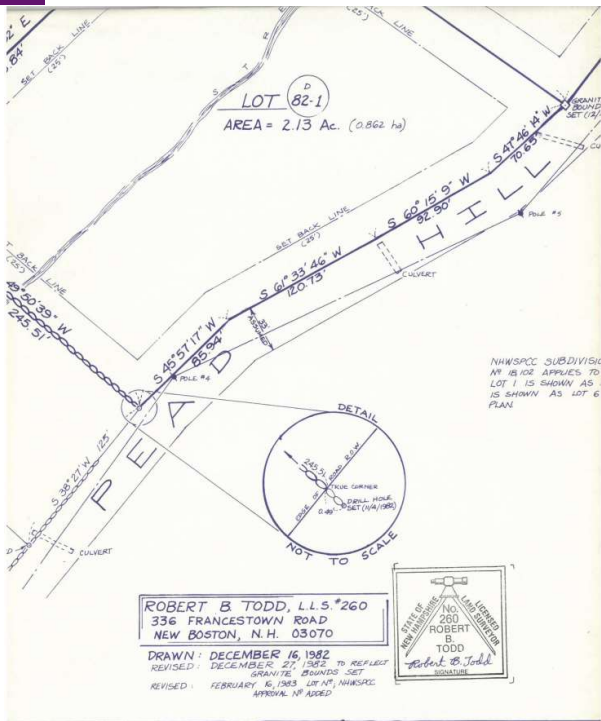


RCAP *Solutions*

Plan Review

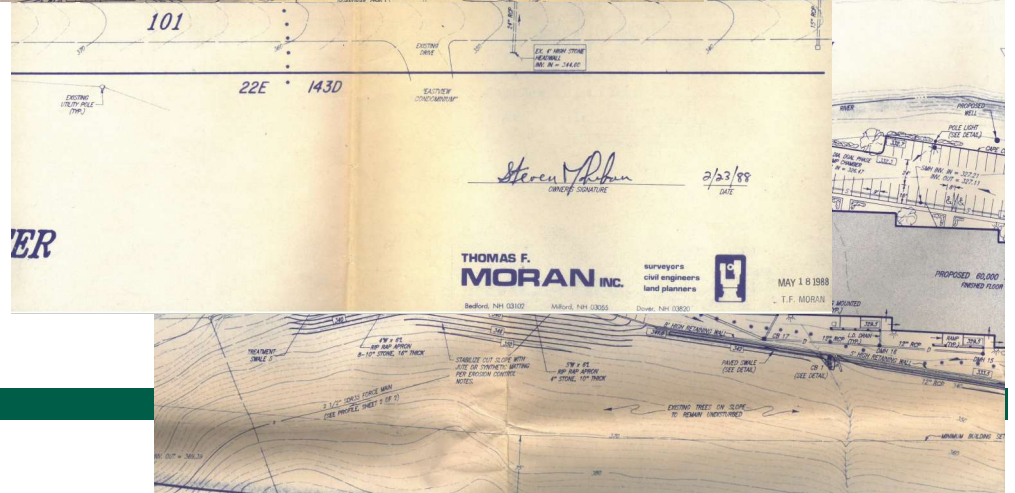
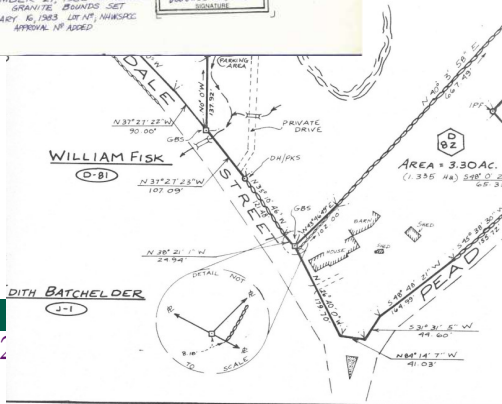
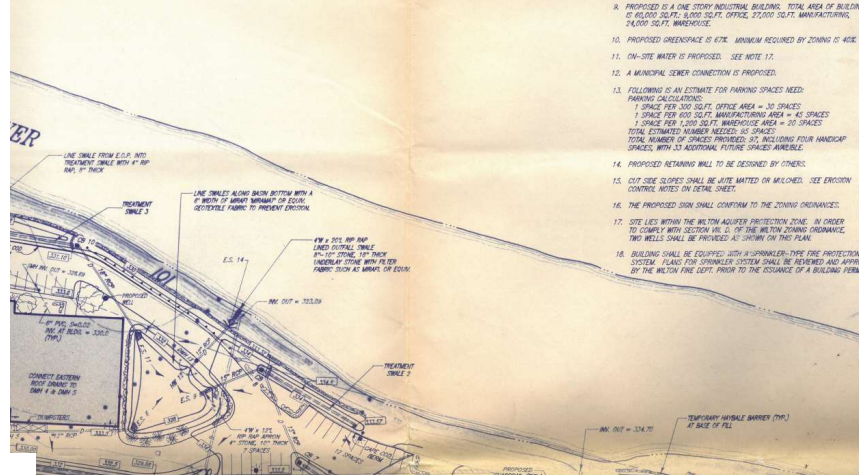


Data Review

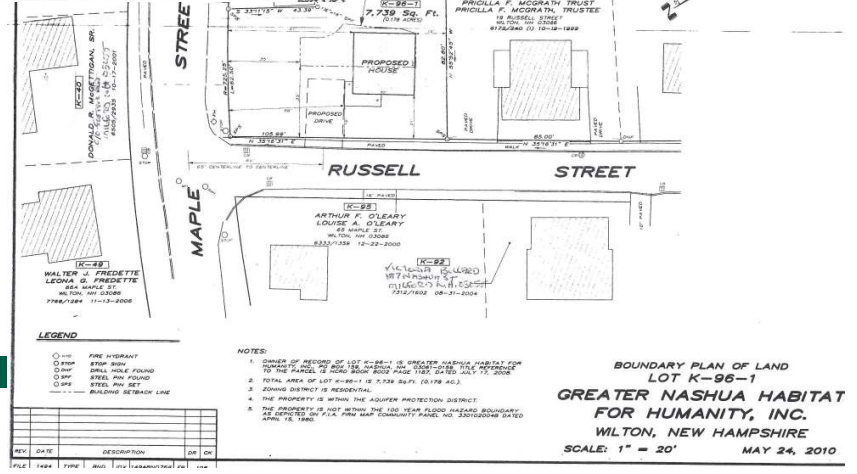
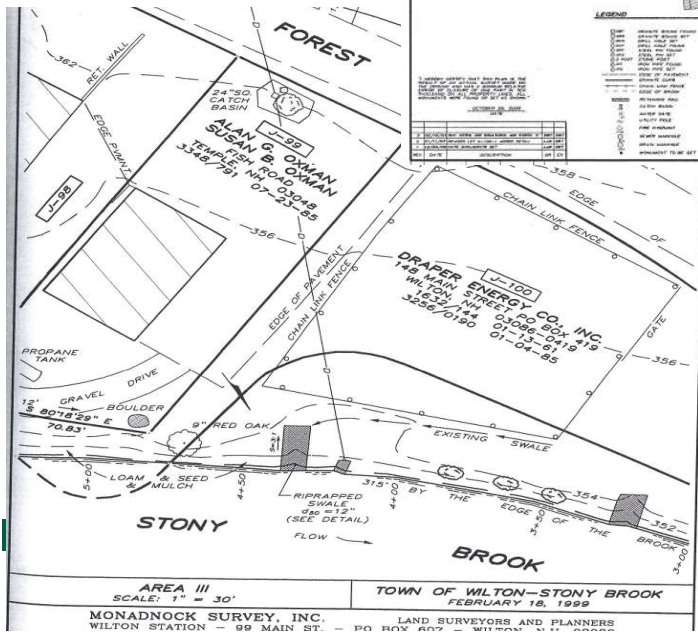
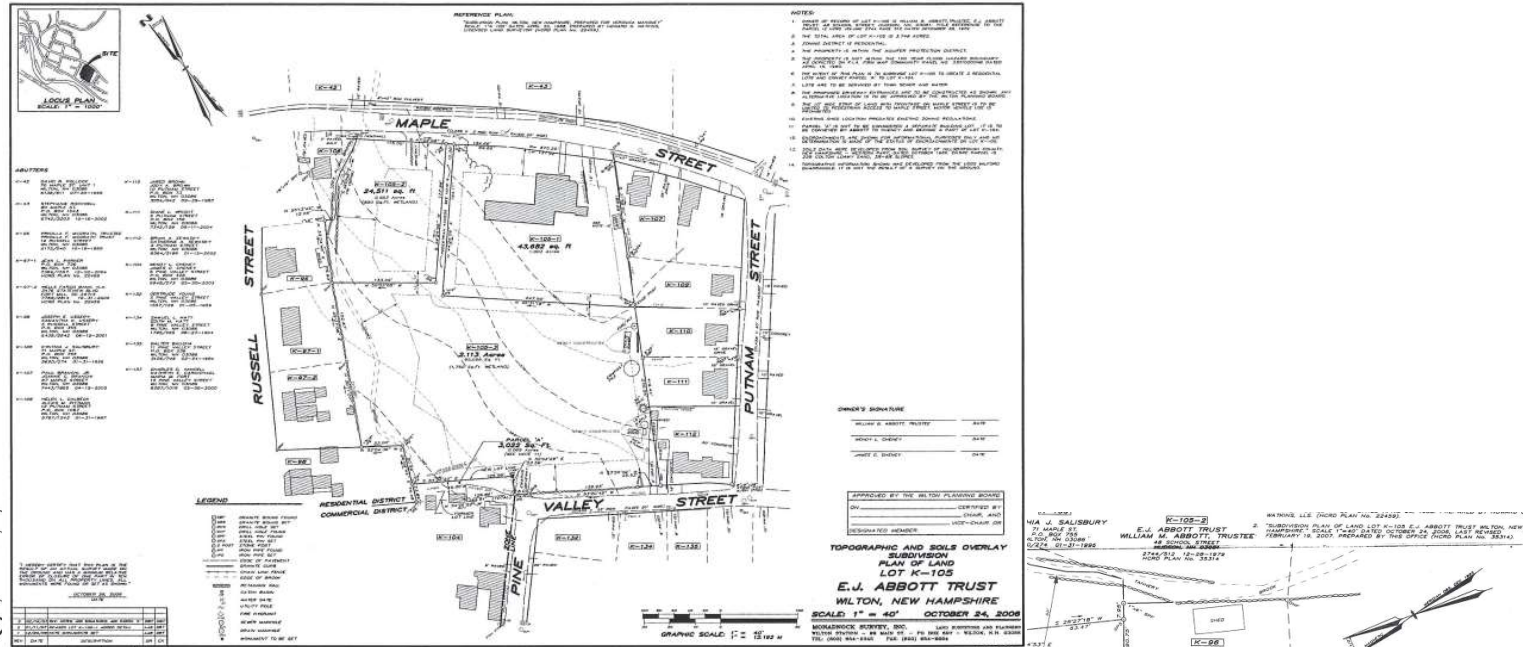


NO.	SIZE	DESIGN C	SPR/FO	AVG (FO)	VS (FO)
1	2W x 100'	3.1 OFS	0.001	0.8	1.0
2	2W x 100'	1.0 OFS	0.0005	0.4	1.0
3	2W x 100'	3.4 OFS	0.0009	0.9	1.0
4	4W x 100'	4.8 OFS	0.0009	0.9	1.0
5	8W x 100'	6.2 OFS	0.0007	0.8	1.0

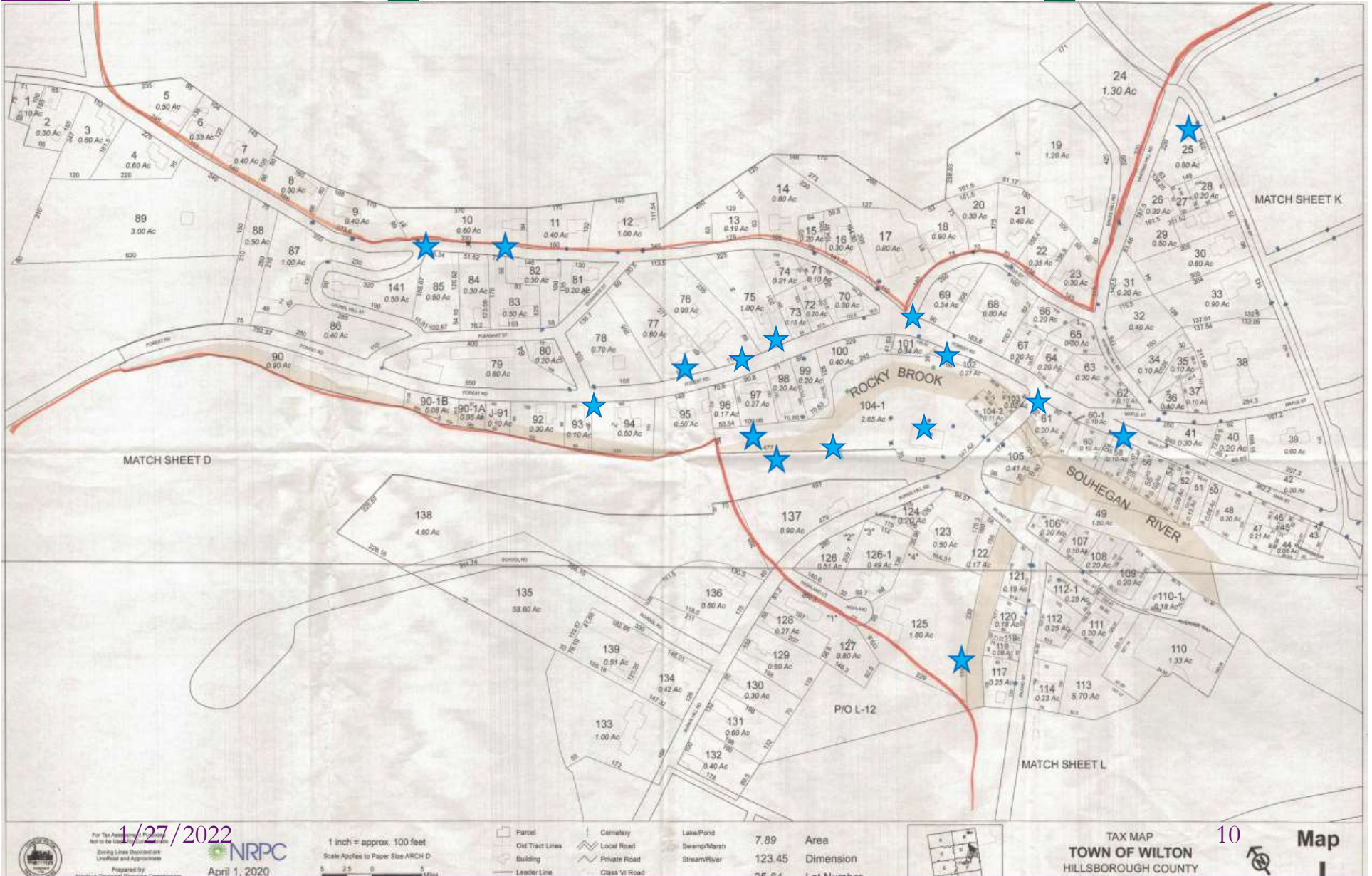
SEE DETAIL FOR TRUNK CONSTRUCTION SHEET 2 OF 2



Data Review



Paper Base Map





Field Work



Wilton Team (3)

Leadership

Map Review

Data collectors

30-40 hour/week (3 M)

RCAP Team (2)

Data collectors

Map Review

GIS specialist

60-80 Hours

RCAP *Solutions*



Data Collected

Pipe Data

- Material
- Size
- Condition
- Length

Headwall

- Condition
- Material
- Erosion Status

Town Property

Slope

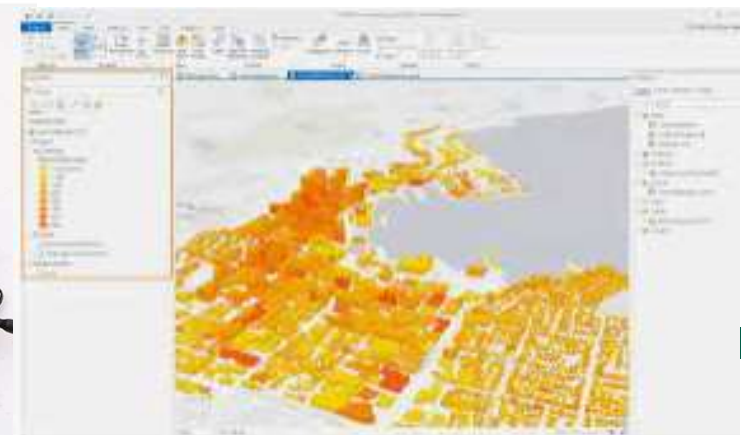
Tools

GPS equipment

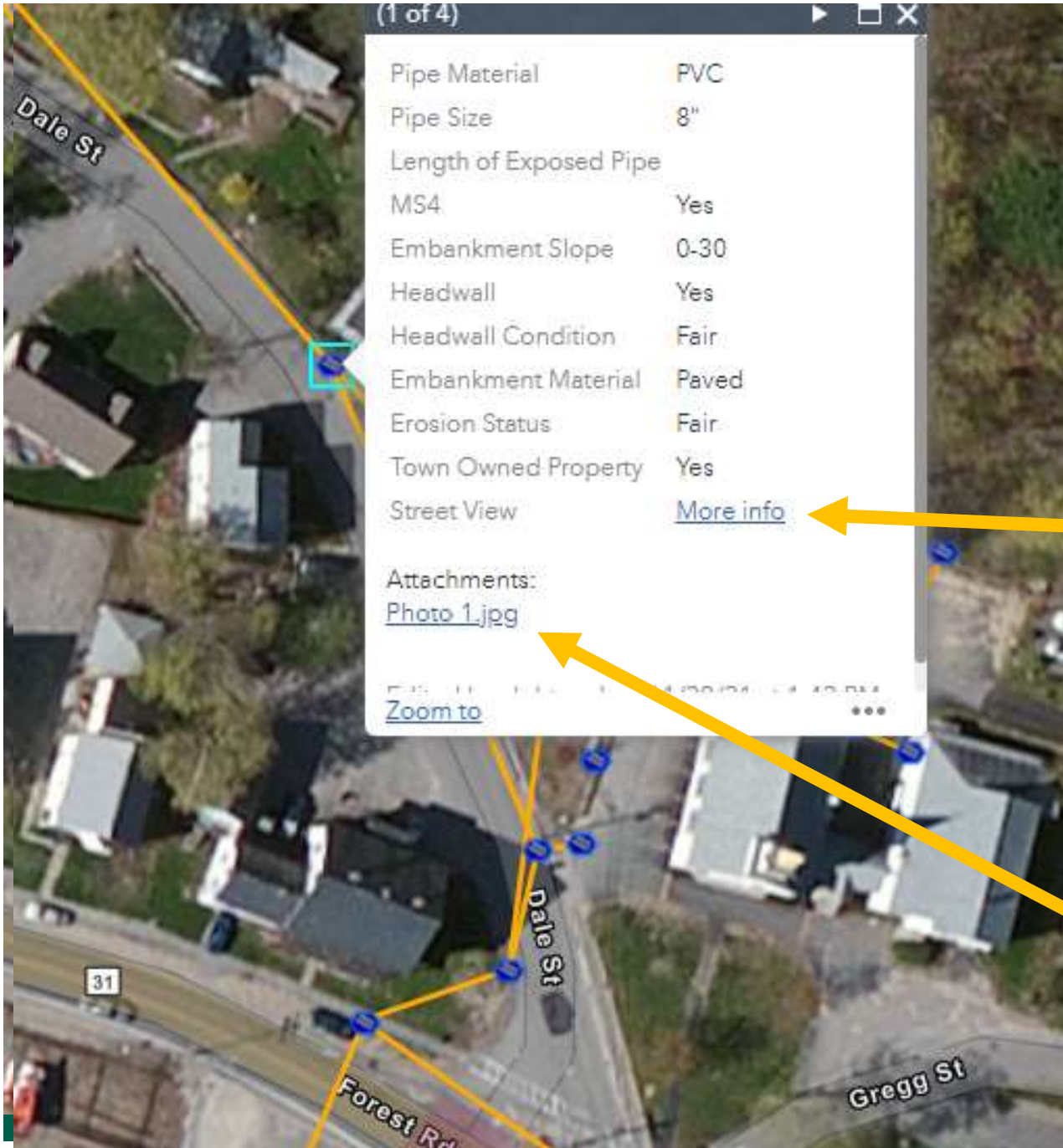
- iPhones
- ArcGIS Collector
- GIS Receiver
- Trimble

Existing paper maps

ArcGIS

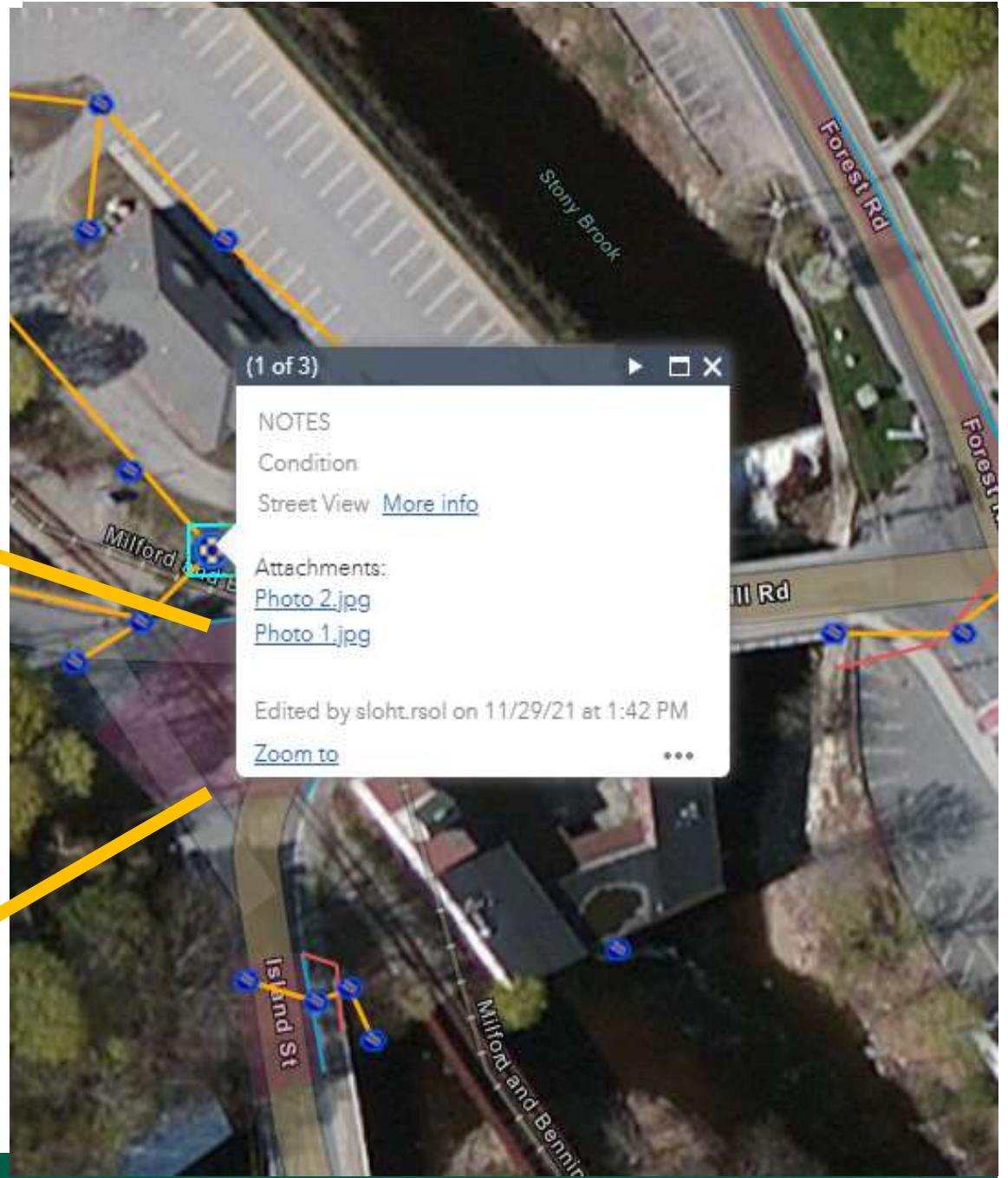


Storm Drain



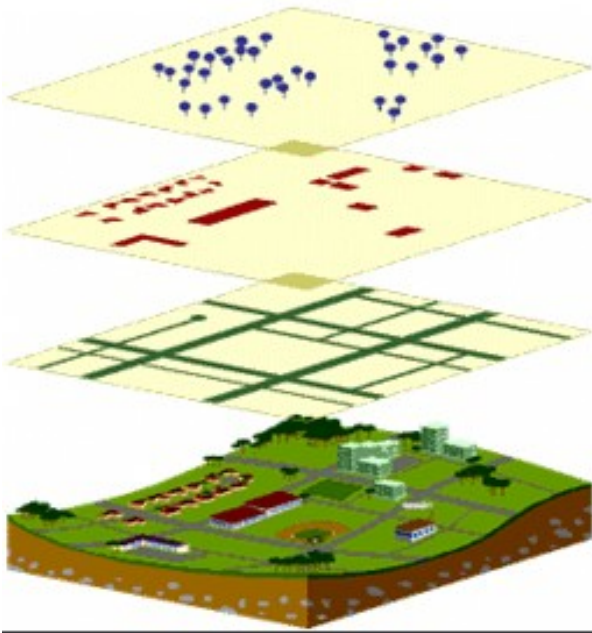
1/27/2022

Catch Basin



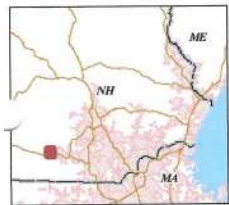
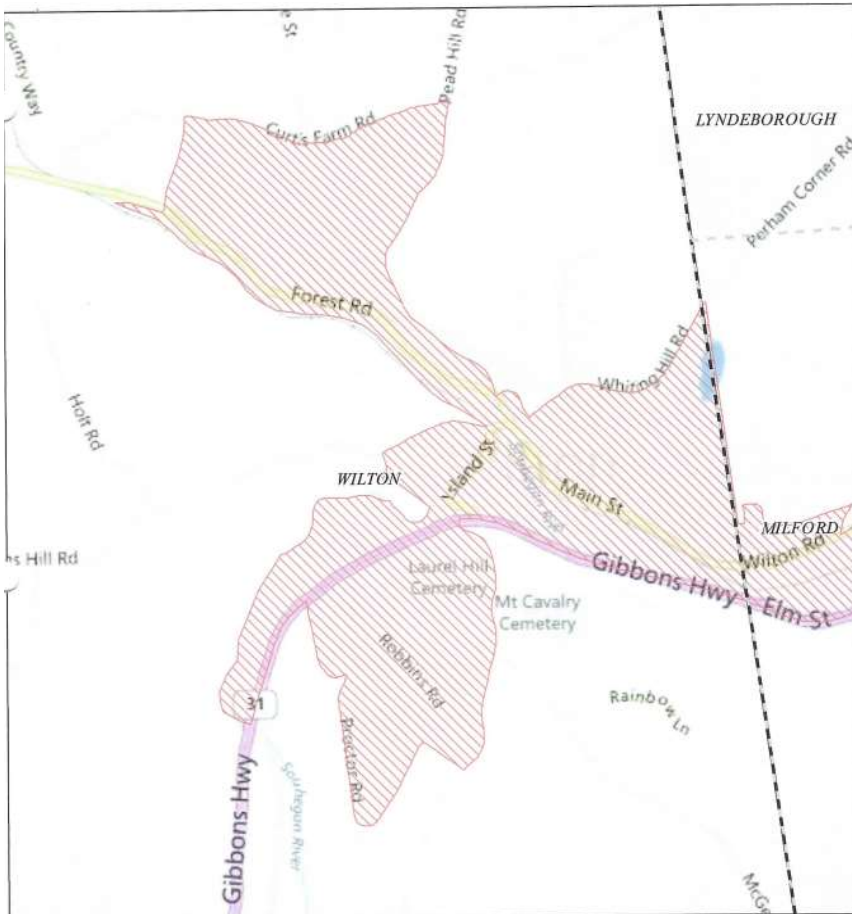
Data Integration

Maps are shared between
The Town of Wilton,
Underwood Engineers,
and
RCAP Solutions



RCAP *Solutions*

Final Product



NPDES Phase II Stormwater Program
Automatically Designated MS4 Areas

Wilton NH

Regulated Area (2000 + 2010 Urbanized Area)

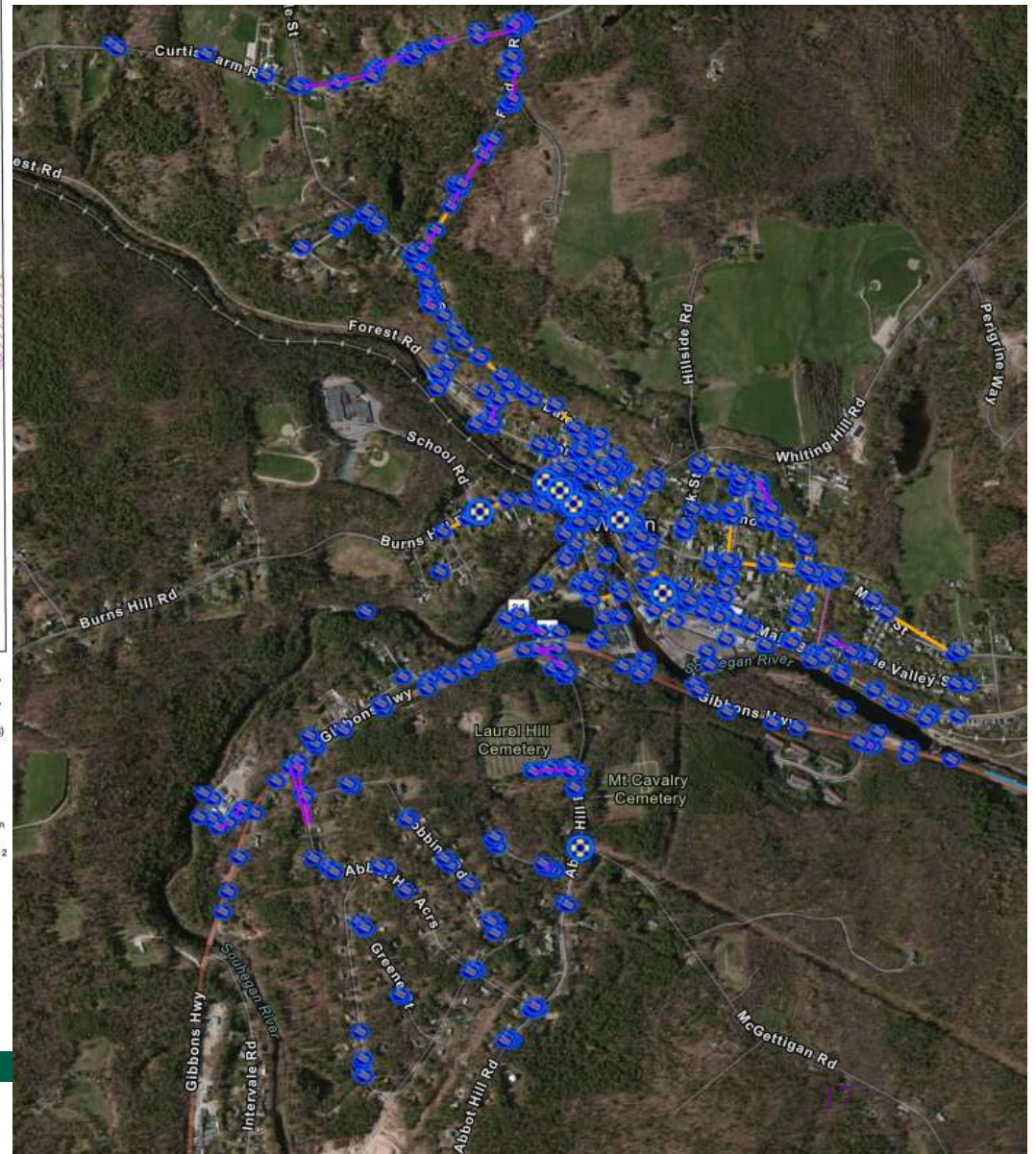


Town Population: **3677**
Regulated Population: **1197**
(Populations estimated from 2010 Census)



Urbanized Areas, Town Boundaries:
US Census (2000, 2010)
Base map © 2010 Microsoft Corporation
and its data suppliers

US EPA Region 1 GIS Center Map #8824, 11/19/2012





Thank you!

Erick Toledo

NH State Lead

RCAP Solutions

Email etoledo@rcapsolutions.org

Phone 978-227-2277

RCAP *Solutions*

