



DEPARTMENT OF ENVIRONMENTAL SERVICES

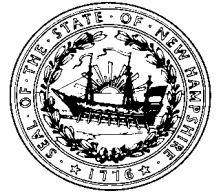
WETLANDS BUREAU

29 Hazen Drive PO Box 95

Concord, NH 03302-0095

Phone: (603) 271-2147 Fax: (603) 271-6588

web site: www.des.nh.gov email: wetmail@des.nh.gov



Notification of Forest Management or Timber Harvest Activities Having Minimum Wetlands Impact

Please circle YES or NO to respond to each question. **Bold-faced terms** are defined on the attached page.

<p>1. Will the proposed forest management activity be in or adjacent to a municipally designated prime wetland, or cross any wetland or surface water? If NO, then you do not need to file this form or any other wetlands application. If YES, continue.</p>	<p>Yes No</p>
<p>2. Will the construction of all crossings follow the Best Management Practices (BMPs) for Erosion Control on Timber Harvesting Operations in New Hampshire? Please note, for DES purposes BMPs are mandatory [<i>Rule Env-Wt 304.05</i>].</p>	<p>Yes No</p>
<p>3. Is land being cleared in preparation for subdivision, development, or conversion to non-forestry use?</p>	<p>Yes No</p>
<p>4. Is the proposed activity in bogs, marshes, sand dunes, tidal wetlands, undisturbed tidal buffer zone, a wetland identified by the Natural Heritage Inventory, or in or within 100 feet of designated prime wetlands?</p>	<p>Yes No</p>
<p>5. Does any crossing exceed any of the following criteria?</p> <ul style="list-style-type: none"> ➤ For installation of a culvert and associated fill, rock ford, or temporary crossing: <ul style="list-style-type: none"> a) Is the width of the roadway travel surface at the crossing more than 20 feet (from edge of road to edge of road)? b) Is the fill width more than 50 feet from toe of slope to toe of slope? c) Is the length of any forested wetland or wet meadow crossing (measured along the proposed access way) more than 50 feet? d) Is the length of any surface water crossing (measured from base of bank to base of bank) more than 10 feet? e) Do the wetlands that are being crossed have standing water for more than two months of the year? ➤ For installation of a bridge: <ul style="list-style-type: none"> a) Is any work proposed in the water? b) Does the fill for the abutment(s) exceed 3,000 square feet in the banks of the stream? ➤ For installation of a temporary road through forested wetlands during frozen conditions, constructed of snow or inverted stumps: <ul style="list-style-type: none"> a) Is the road travel surface more than 15 ft. wide or 200 feet long? 	<p>Yes No</p> <p>Yes No</p> <p>Yes No</p> <p>Yes No</p> <p>Yes No</p> <p>Yes No</p> <p>Yes No</p> <p>Yes No</p>

If you answered YES to any of the questions numbered 3, 4, or 5, you must file a different **wetlands application** (see Definitions of Terms - **wetlands applications** - for more information) and no work in wetlands or surface waters may be done until you receive a permit from the DES Wetlands Bureau. If you answered NO to all questions numbered 3, 4, or 5, complete the remaining sections of the application (on the reverse side).

Definitions of Terms - Notification of Forest Management and Timber Harvest Activities Having Minimum Wetlands Impact

Best Management Practices for Erosion Control on Timber Harvesting Operations in New Hampshire (2004) - The manual developed by the New Hampshire Department of Resources and Economic Development (DRED) which addresses the best management practices for reducing soil erosion and controlling sedimentation from timber harvesting activities. Copies are available at no charge from DRED, 172 Pembroke Road, PO Box 1856, Concord, NH 03302-1856, phone: (603) 271-2214, http://des.nh.gov/organization/divisions/water/wetlands/documents/timber_harvesting.pdf; or UNH Cooperative Extension, Durham, NH 03824, phone: (603) 862-1028, or from the DES Wetlands Bureau (see Wetlands Applications below)

Bog - A wetland distinguished by stunted evergreen trees and shrubs, peat deposits, and acidic soil and water conditions. Bogs generally have no inlet or outlet. Sphagnum moss may be abundant. *The Notification form may not be used for any crossings or activities in bogs.*

Designated Prime Wetland - A wetland designated by a municipality as requiring special protection in accordance with Env-Wt 700. Projects in or within 100 feet of prime wetlands are classified as major projects. *The Notification form shall not be used for any crossings or activities in or adjacent to prime wetlands. If you are not sure whether or not the project is within 100 feet of a designated prime wetland, please call the DES Wetlands Bureau, (603) 271-2147.* Check with the municipal office or DES for the locations of these wetlands. As of April 2009, municipalities with designated prime wetlands are: Andover, Barrington, Bow, Brentwood, Brookline, Derry, Enfield, Exeter, Fremont, Gilford, Goffstown, Hampton Falls, Holderness, Hooksett, Meredith, Nashua, New Ipswich, New London, Newington, Newmarket, Northwood, Pelham, Salem, Sanbornton, Sandwich, Tamworth, Weare, Wolfeboro.

Forested wetland - A wetland where trees 20 feet and taller are the dominant plants. Typical trees are red maple, green ash, black willow, American elm, balsam fir, black spruce, tamarack and sometimes hemlock and white pine. May also be called a swamp.

Marsh - A wetland distinguished by the: 1) absence of trees and shrubs; 2) dominance of soft-stemmed herbaceous plants such as cattails, grasses, reeds, and sedges; may have lily pads or pickerel weed, and 3) a water table at or above the surface which may fluctuate seasonally. *The Notification form may not be used for any crossings or activities in marshes.*

Natural Heritage Inventory - Information about rare, threatened, and endangered species and exemplary natural communities in New Hampshire, which is maintained by the Natural Heritage Bureau at the Department of Resources and Economic Development. Call (603) 271-3623 or contact www.nhnaturalheritage.org for information.

Natural Resources Conservation Service (NRCS), formerly Soil Conservation Service (SCS), soils map - A map developed as part of a soil survey, which provides information about characteristics of the soils and the suitability, limitations, and management of soils for specified uses. Contact the state NRCS headquarters (603) 868-7581 or visit the NRCS website: http://soils.usda.gov/survey/printed_surveys/state.asp?state=New%20Hampshire&abbr=NH, or your county office (<http://offices.sc.egov.usda.gov/locator/app>) for information on the current soil survey maps.

RSA 79:10 - The statute that requires notification to assessing officials, NH Department of Revenue, and NH Department of Resources and Economic Development (Forest and Lands Division) of intent to harvest timber.

Surface water - Those waters of the state, as defined by RSA 482-A:4, which have standing or flowing water at or on the surface of the ground during part or all of the year. This includes, but is not limited to, rivers, streams (perennial and seasonal), lakes, ponds and tidal waters, and marshes.

Swamp - A wetland dominated by trees or shrubs. Typical trees are red maple, green ash, black willow, American elm, balsam fir, black spruce, tamarack and sometimes hemlock and white pine.

Tidal buffer zone - The area extending landward 100 feet from the highest observable tide line. This area can contain wetlands, transitional areas, and natural and developed upland areas.

Toe of Slope - The bottom edge (base) of the road fill where it meets the flatter grade of the ground surface.

USGS (United States Geological Survey) topographic map - A map that uses contour lines to represent the three-dimensional features of a landscape on a two-dimensional surface. These maps use a line and symbol representation of natural and artificially created features in an area. **Map scale – 1:24,000** Maps are available at most outdoors and sporting goods stores as well as bookstores.

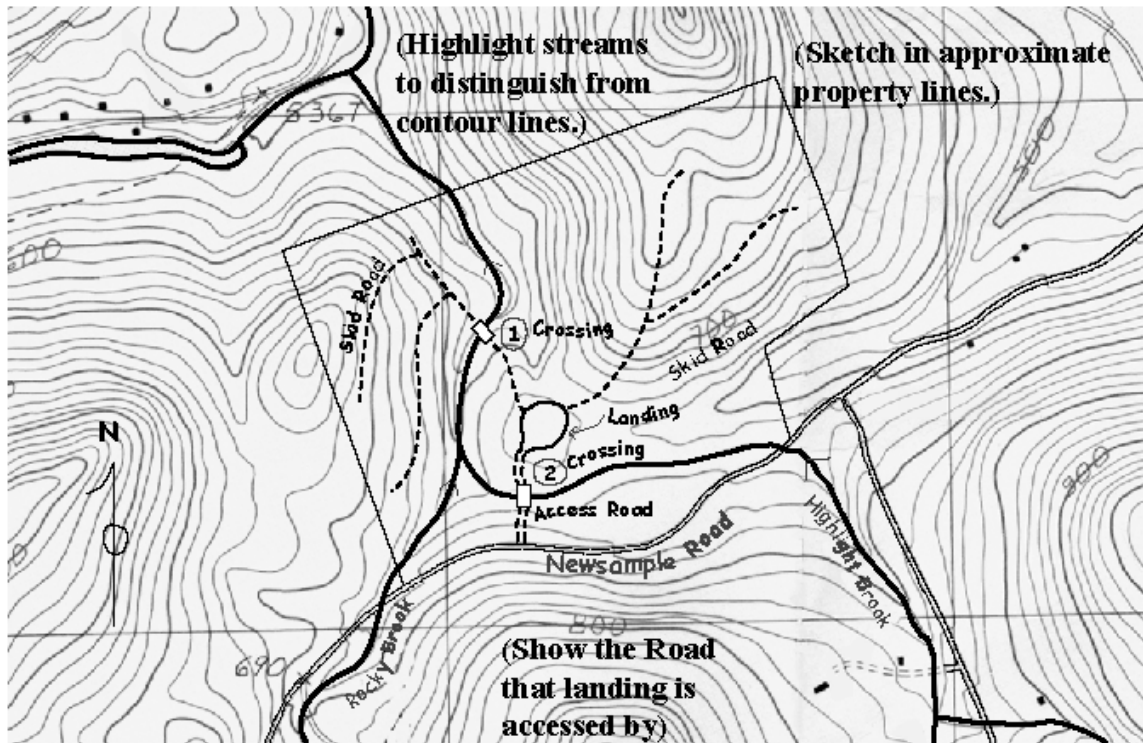
Wetland - An area that is inundated or saturated by surface or ground water at a frequency and duration sufficient to support, and that under normal conditions does support, a prevalence of vegetation (more than 50%) typically adapted for life in saturated soil conditions (hydric soils). Wetlands include, but are not limited to swamps, bogs, marshes and similar areas.

Wetlands Applications - Other forms (*Standard Dredge and Fill* or *Minimum Impact Expedited*) are used to apply for permits to work in wetlands or surface waters if the answer to question 3, 4, or 5 is “Yes.” These forms can be obtained from town clerks, by calling the DES Wetlands Bureau at (603) 271-2147, or from the DES web site on the Internet at: www.des.nh.gov. For projects that do not qualify for the Notification of Forest Management (if there were any “Yes” answers on questions 3-5), no work in a wetland or surface water may begin without obtaining and posting a DES wetlands permit.

Wet Meadow - An area dominated by sedges, grasses, and non-woody vegetation less than 3 feet in height, which is saturated for long periods during the growing season and may be seasonally flooded.

Sample Sketch of Supplemental Site Map Showing Type and Location of all Wetland and Surface Water Crossings

A sketch such as this can be submitted in addition to, not in place of, the USGS map.



Proposed Crossings

- ① Skidder Bridge
- ② Culvert

Key

- Access Road
- Proposed Skid Road
- Log Landing
- Property Line (approximate)