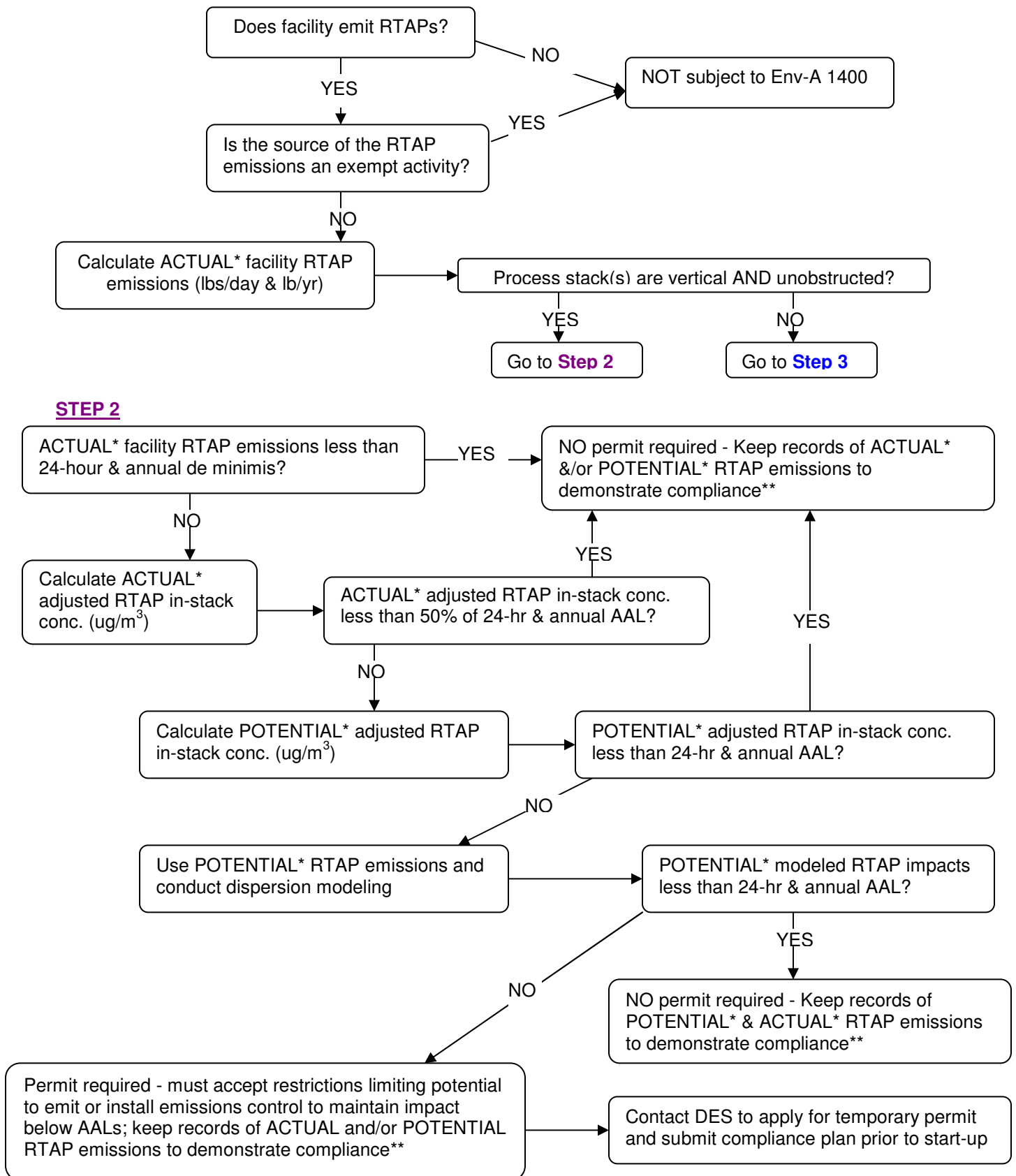
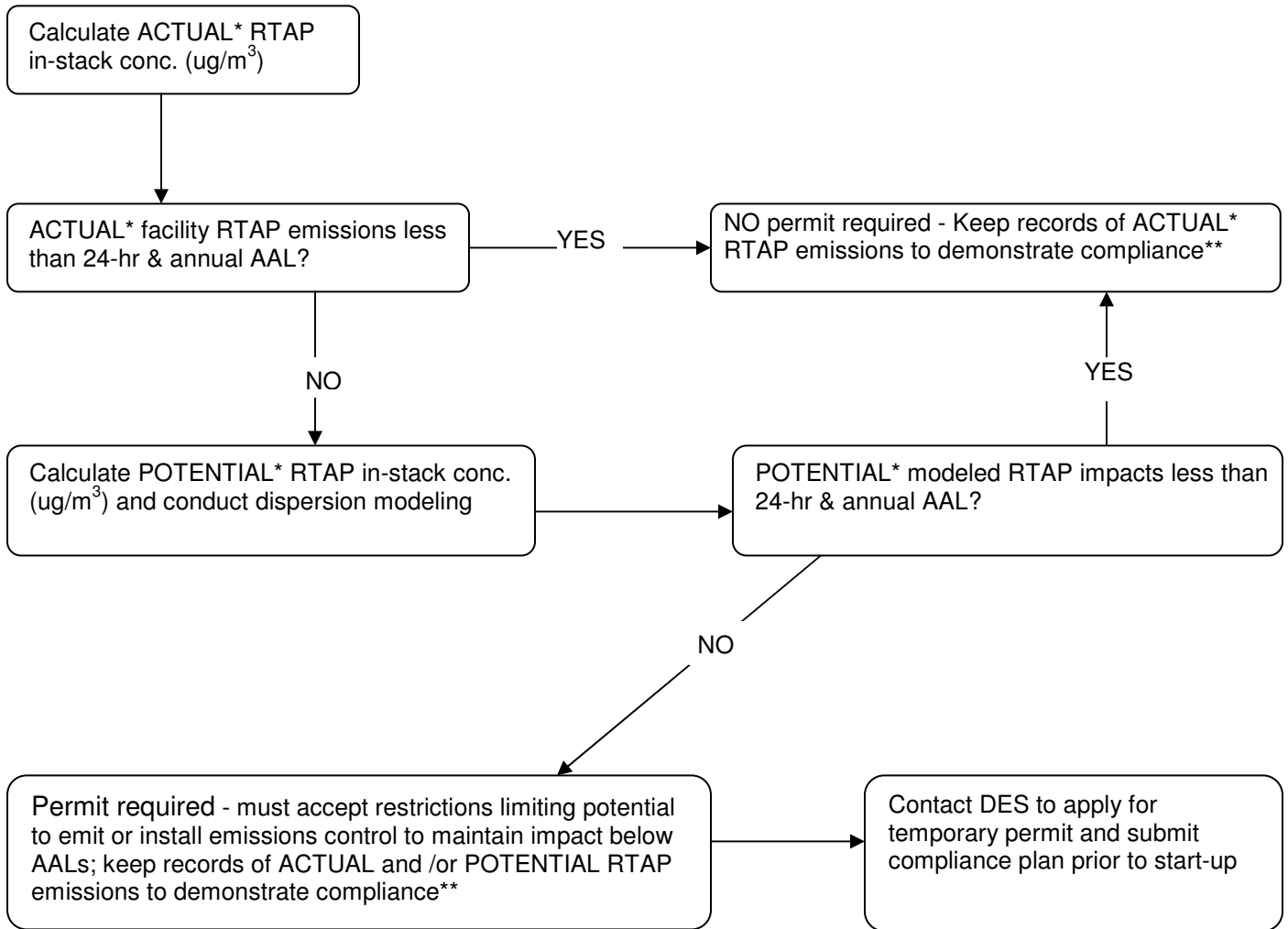


Env-A 1400 Compliance Determination Flow Chart

(Revised 02/10)



STEP 3



* Note that ACTUAL and/or POTENTIAL emissions are UNCONTROLLED emissions. If the facility has a current permit to operate mandating the use of a control device to achieve emission reductions, the source may use the control efficiency to determine compliance with Env-A 1400.

** Note that even when a source can use actual emissions to demonstrate compliance with Env-A 1400 under this policy, it may still be necessary to calculate potential emissions of other pollutants to determine the applicability of other regulations such as VOC RACT, Title V, Title III, etc.