



The State of New Hampshire
DEPARTMENT OF ENVIRONMENTAL SERVICES



Thomas S. Burack, Commissioner

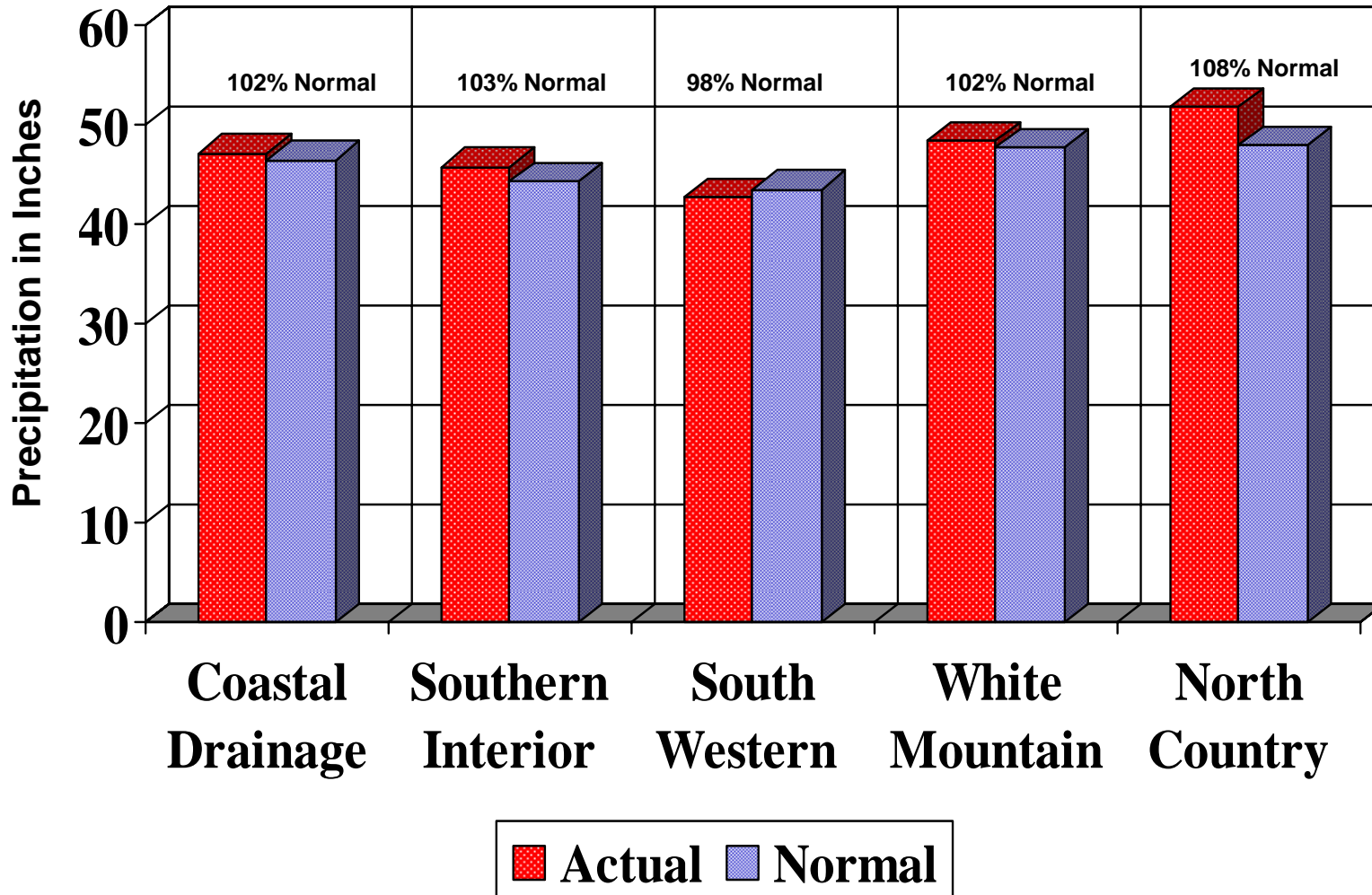
**AGGREGATED PRECIPITATION DATA for N.H.
 DROUGHT MANAGEMENT AREAS**

	Actual Rainfall (inches)	Normal Rainfall (inches)	Deviation from Normal (inches)	Percent of Normal
<u>Coastal Drainage:</u> Rockingham, Strafford counties				
four month	12.14	14.78	-2.64	82%
six month	19.35	23.64	-4.29	82%
nine month	37.53	34.69	2.84	108%
twelve month	47.17	46.46	0.71	102%
<u>Southern Interior:</u> Belknap, Hillsborough, Merrimack counties				
four month	11.61	13.71	-2.10	85%
six month	18.78	21.79	-3.00	86%
nine month	36.63	33.05	3.58	111%
twelve month	45.78	44.34	1.44	103%
<u>South Western:</u> Cheshire, Sullivan counties				
four month	11.36	13.05	-1.70	87%
six month	18.06	20.63	-2.57	88%
nine month	33.57	32.24	1.33	104%
twelve month	42.65	43.53	-0.89	98%
<u>White Mountain:</u> Carroll, Grafton counties				
four month	11.44	14.36	-2.92	80%
six month	19.54	22.92	-3.38	85%
nine month	37.63	35.50	2.13	106%
twelve month	48.43	47.69	0.75	102%
<u>North Country:</u> Coos county				
four month	12.18	13.72	-1.54	89%
six month	21.17	22.09	-0.92	96%
nine month	38.31	35.57	2.74	108%
twelve month	51.78	47.93	3.85	108%

four month period : December 2008 - March 2009
 six month period : October 2008 - March 2009
 nine month period : July 2008 - March 2009
 twelve month period: April 2008 - March 2009

Source: Northeast River Forecast Center, NH Des Dam Bureau

TWELVE MONTH AGGREGATED PRECIPITATION DATA for N.H. DROUGHT MANAGEMENT AREAS from April 2008 through March 2009





MONTHLY PRECIPITATION DATA FOR N.H COUNTIES

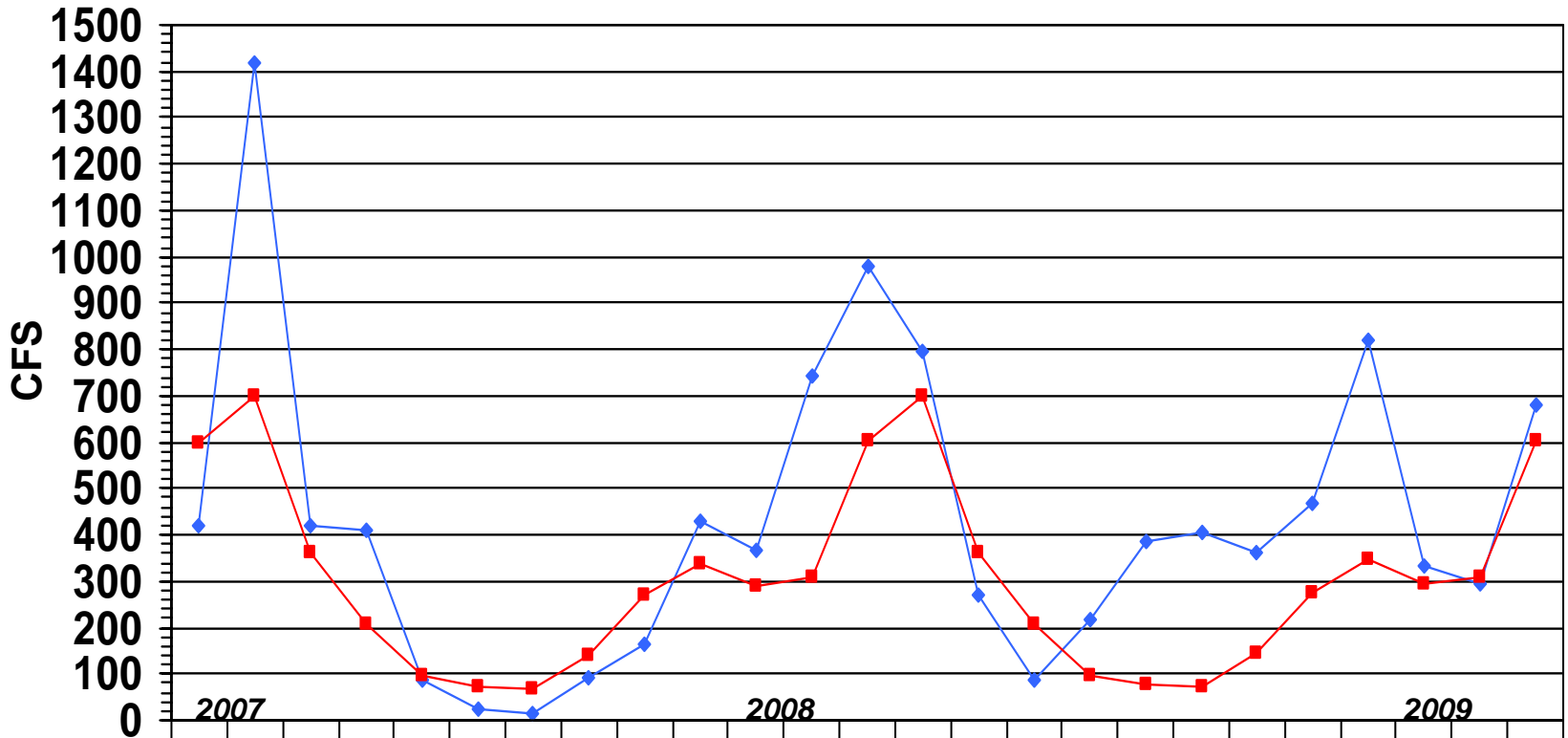
		2008									2009		
		APRIL	MAY	JUNE	JULY	AUG	SEPT	OCT	NOV	DEC	JAN	FEB	MARCH
<u>Coastal drainage</u>													
STRAFFORD	actual	3.42	0.78	5.74	5.11	3.58	8.00	2.54	4.62	3.76	2.33	2.39	2.71
	normal	4.39	3.88	3.77	3.75	3.69	3.77	4.39	4.71	3.99	3.68	3.21	4.02
	deviation	-0.97	-3.10	1.97	1.36	-0.11	4.23	-1.85	-0.09	-0.23	-1.35	-0.82	-1.31
ROCKINGHAM	actual	3.40	1.21	4.72	6.47	4.18	9.03	2.70	4.55	4.81	3.05	2.30	2.93
	normal	4.12	3.69	3.68	3.59	3.55	3.76	4.20	4.42	3.93	3.77	3.09	3.86
	deviation	-0.72	-2.48	1.04	2.88	0.63	5.27	-1.50	0.13	0.88	-0.72	-0.79	-0.93
Average	actual	3.41	1.00	5.23	5.79	3.88	8.52	2.62	4.59	4.29	2.69	2.35	2.82
	normal	4.26	3.79	3.73	3.67	3.62	3.77	4.30	4.57	3.96	3.73	3.15	3.94
	deviation	-0.85	-2.79	1.51	2.12	0.26	4.75	-1.68	0.02	0.33	-1.04	-0.81	-1.12
<u>Southern Interior</u>													
HILLSBOROUGH	actual	3.15	0.90	4.42	6.21	3.90	7.94	2.60	4.28	5.36	2.77	1.72	2.95
	normal	3.89	3.82	3.75	3.75	3.78	3.67	4.16	4.18	3.84	3.80	3.07	3.88
	deviation	-0.74	-2.92	0.67	2.46	0.12	4.27	-1.56	0.10	1.52	-1.03	-1.35	-0.93
MERRIMACK	actual	3.75	0.63	5.77	5.38	4.74	8.42	3.08	4.61	4.71	2.72	2.08	3.20
	normal	3.66	3.84	3.66	3.81	3.78	3.52	3.97	3.97	3.56	3.49	2.79	3.51
	deviation	0.09	-3.21	2.11	1.57	0.96	4.90	-0.89	0.64	1.15	-0.77	-0.71	-0.31
BELKNAP	actual	2.29	0.59	5.97	4.55	5.35	7.04	2.70	4.24	3.25	1.57	2.00	2.51
	normal	3.66	3.82	3.79	4.08	3.84	3.55	4.00	3.94	3.50	3.52	2.76	3.42
	deviation	-1.37	-3.23	2.18	0.47	1.51	3.49	-1.30	0.30	-0.25	-1.95	-0.76	-0.91
Average	actual	3.06	0.71	5.39	5.38	4.66	7.80	2.79	4.38	4.44	2.35	1.93	2.89
	normal	3.74	3.83	3.73	3.88	3.80	3.58	4.04	4.03	3.63	3.60	2.87	3.60
	deviation	-0.67	-3.12	1.65	1.50	0.86	4.22	-1.25	0.35	0.81	-1.25	-0.94	-0.72
<u>South Western</u>													
CHESHIRE	actual	3.14	0.88	4.68	5.93	3.47	6.13	3.04	3.15	4.87	2.16	1.21	2.67
	normal	3.64	3.97	3.81	4.03	4.05	3.57	3.82	3.80	3.51	3.64	2.82	3.60
	deviation	-0.50	-3.09	0.87	1.90	-0.58	2.56	-0.78	-0.65	1.36	-1.48	-1.61	-0.93
SULLIVAN	actual	3.41	0.78	5.27	5.37	4.33	5.78	3.95	3.27	5.24	2.50	1.51	2.55
	normal	3.52	3.90	3.75	4.00	3.93	3.63	3.87	3.67	3.26	3.27	2.67	3.33
	deviation	-0.11	-3.12	1.52	1.37	0.40	2.15	0.08	-0.40	1.98	-0.77	-1.16	-0.78
Average	actual	3.28	0.83	4.98	5.65	3.90	5.96	3.50	3.21	5.06	2.33	1.36	2.61
	normal	3.58	3.94	3.78	4.02	3.99	3.60	3.85	3.74	3.39	3.46	2.75	3.47
	deviation	-0.31	-3.11	1.20	1.64	-0.09	2.36	-0.35	-0.53	1.67	-1.13	-1.39	-0.86
<u>White Mountain</u>													
GRAFTON	actual	3.55	1.50	5.88	7.42	6.18	4.63	4.12	3.49	4.66	1.84	1.88	2.27
	normal	3.73	4.01	4.26	4.34	4.43	4.05	4.19	4.21	3.66	3.64	2.79	3.60
	deviation	-0.18	-2.51	1.62	3.08	1.75	0.58	-0.07	-0.72	1.00	-1.80	-0.91	-1.33
CARROLL	actual	3.91	1.17	5.60	5.90	5.54	6.51	2.96	5.62	4.99	2.20	2.59	2.45
	normal	4.05	4.19	4.14	4.25	4.21	3.88	4.38	4.33	3.97	4.01	3.05	4.00
	deviation	-0.14	-3.02	1.46	1.65	1.33	2.63	-1.42	1.29	1.02	-1.81	-0.46	-1.55
Average	actual	3.73	1.34	5.74	6.66	5.86	5.57	3.54	4.56	4.83	2.02	2.24	2.36
	normal	3.89	4.10	4.20	4.30	4.32	3.97	4.29	4.27	3.82	3.83	2.92	3.80
	deviation	-0.16	-2.77	1.54	2.37	1.54	1.61	-0.75	0.29	1.01	-1.81	-0.69	-1.44
<u>North Country</u>													
COOS	actual	3.73	2.46	7.28	7.68	5.62	3.84	4.15	4.84	5.19	2.16	2.88	1.95
	normal	3.61	4.14	4.61	4.53	4.70	4.25	4.13	4.24	3.75	3.61	2.79	3.57
	deviation	0.12	-1.68	2.67	3.15	0.92	-0.41	0.02	0.60	1.44	-1.45	0.09	-1.62

LAMPREY RIVER near NEWMARKET NH

Gage# 01073500



MONTHLY MEAN FLOW COMPARED TO MEAN OF MONTHLY FLOWS



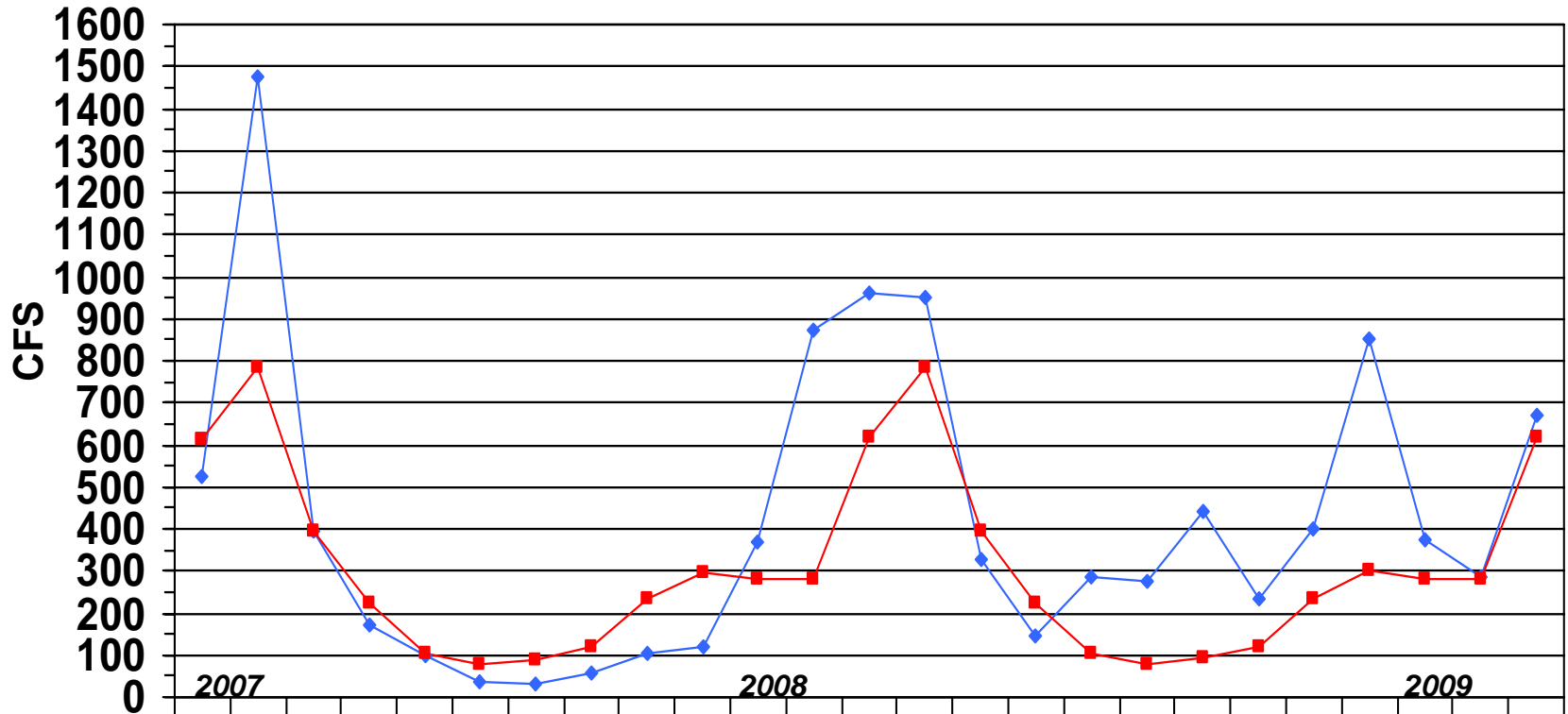
	2007			2008												2009									
	Mar	Apr	May	June	July	Aug	Sep	Oct	Nov	Dec	Jan	Feb	Mar	April	May	June	July	Aug	Sep	Oct	Nov	Dec	Jan	Feb	Mar
◆ Monthly Mean Flow	422	1418	422	409	89	24	13	91	164	427	367	743	977	798	272	85	218	387	406	361	466	820	332	293	681
■ Mean of Monthly Flow s	596	700	363	209	95	70	69	142	272	340	291	307	601	701	362	207	96	75	74	145	275	346	292	307	602
% of Normal	71%	203%	116%	195%	93%	34%	19%	64%	60%	126%	126%	242%	162%	114%	75%	41%	227%	516%	549%	249%	169%	237%	114%	95%	113%

SOUHEGAN RIVER at MERRIMACK NH

Gage# 01094000



MONTHLY MEAN FLOW COMPARED TO MEAN OF MONTHLY FLOWS

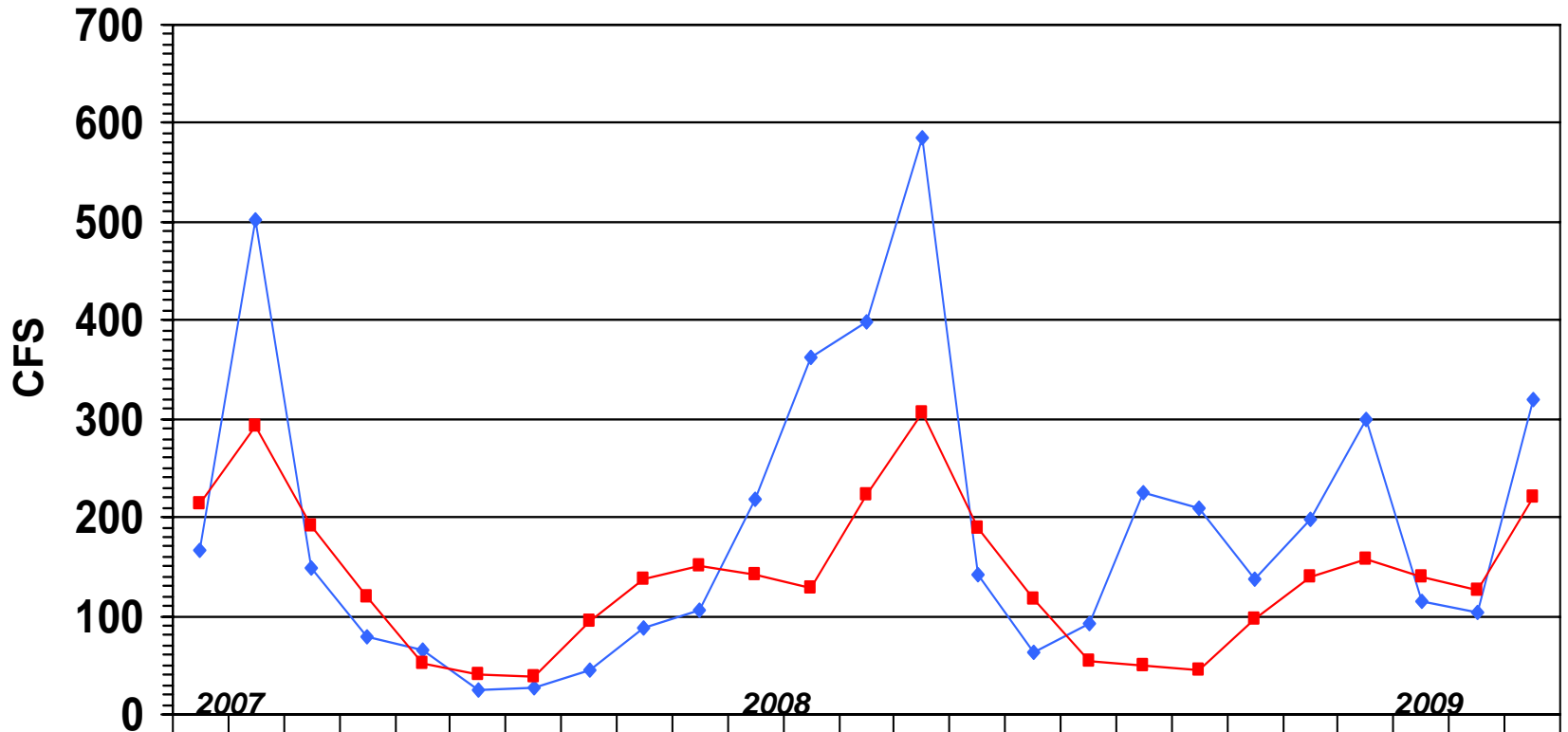


	2007			2008												2009									
	Mar	Apr	May	June	July	Aug	Sep	Oct	Nov	Dec	Jan	Feb	Mar	April	May	June	July	Aug	Sep	Oct	Nov	Dec	Jan	Feb	Mar
◆ Monthly Mean Flow	524	1474	397	171	98	34	33	58	105	118	369	873	961	950	328	144	288	275	441	233	398	850	374	284	669
■ Mean of Monthly Flow s	615	782	395	223	103	77	88	119	234	294	280	281	620	784	394	222	105	80	92	121	236	301	281	281	620
% of Normal	85%	188%	100%	77%	95%	44%	38%	48%	45%	40%	132%	311%	155%	121%	83%	65%	274%	344%	479%	192%	169%	282%	133%	101%	108%

SOUCOOK RIVER at PEMBROKE ROAD near CONCORD NH, Gage# 01089100



MONTHLY MEAN FLOW COMPARED TO MEAN OF MONTHLY FLOWS



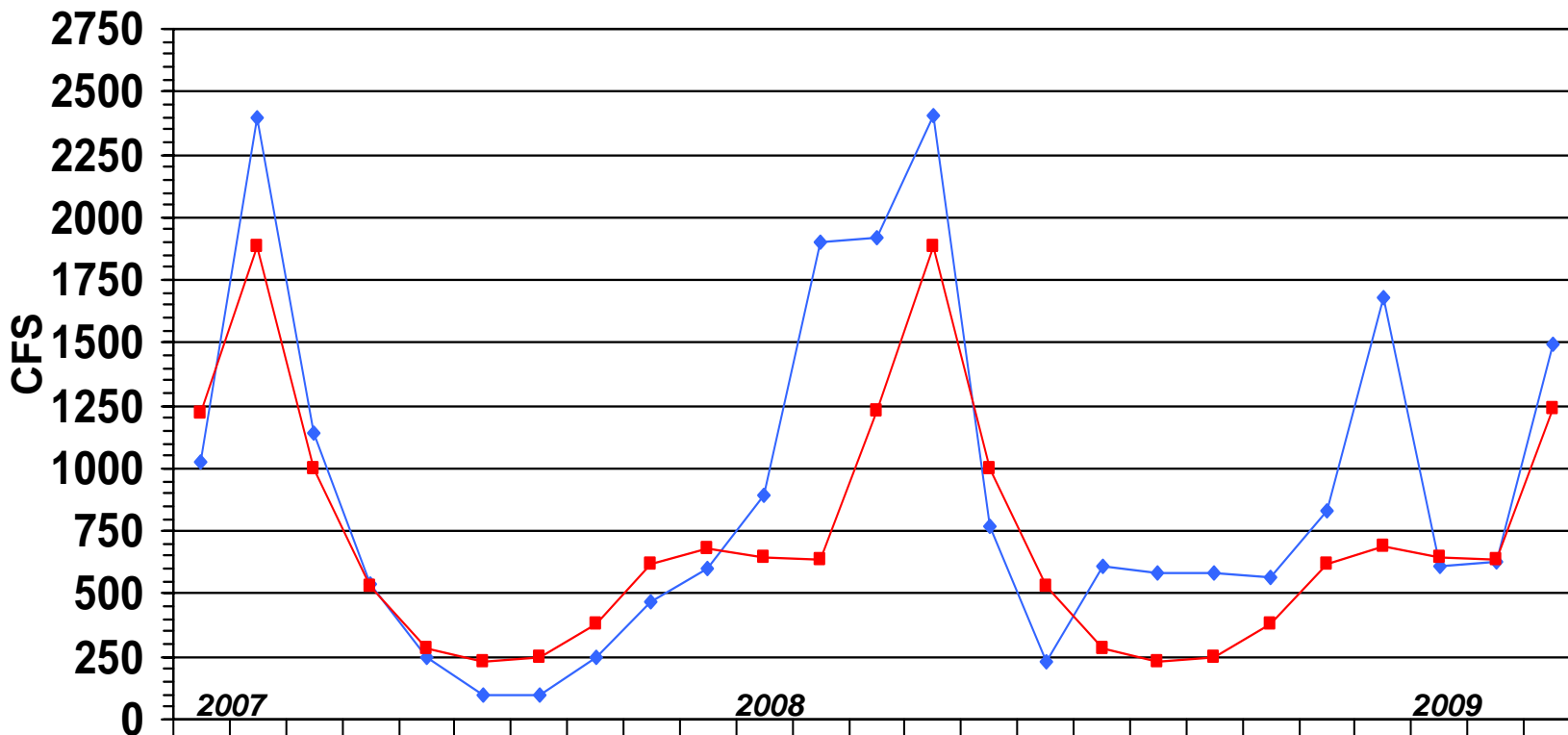
	2007					2008												2009							
	Mar	Apr	May	June	July	Aug	Sep	Oct	Nov	Dec	Jan	Feb	Mar	April	May	June	July	Aug	Sep	Oct	Nov	Dec	Jan	Feb	Mar
◆ Monthly Mean Flow	166	501	148	78	66	25	26	45	87	105	219	363	398	586	142	64	92	226	210	138	198	300	114	104	320
■ Mean of Monthly Flow s	213	293	192	119	51	40	38	94	137	150	141	128	222	307	189	117	53	49	46	96	140	157	139	127	220
% of Normal	78%	171%	77%	66%	129%	62%	68%	48%	64%	70%	155%	284%	179%	191%	75%	54%	174%	461%	456%	144%	141%	191%	82%	82%	145%

ASHUELOT RIVER at HINSDALE NH

Gage# 01161000



MONTHLY MEAN FLOW COMPARED TO MEAN OF MONTHLY FLOWS



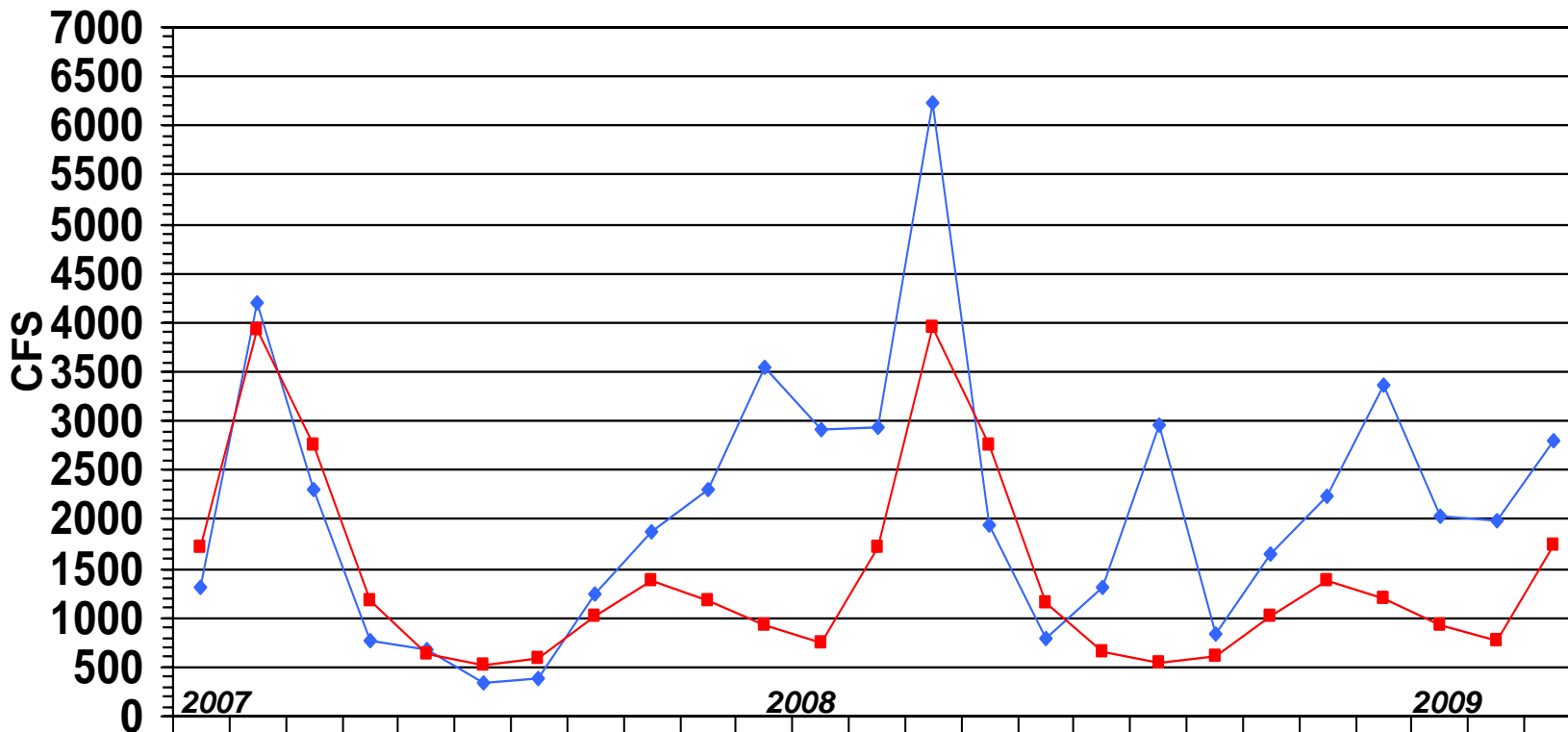
	2007			2008												2009									
	Mar	Apr	May	June	July	Aug	Sep	Oct	Nov	Dec	Jan	Feb	Mar	April	May	June	July	Aug	Sep	Oct	Nov	Dec	Jan	Feb	Mar
◆ Monthly Mean Flow	1025	2393	1142	536	252	96	99	244	471	604	894	1900	1918	2407	765	226	608	585	582	568	829	1676	611	630	1492
■ Mean of Monthly Flow s	1224	1881	997	534	282	229	245	381	619	684	648	639	1231	1886	995	530	286	232	249	383	621	694	648	639	1234
% of Normal	84%	127%	115%	100%	89%	42%	40%	62%	76%	88%	138%	297%	156%	128%	77%	43%	213%	252%	234%	148%	133%	241%	94%	98%	121%

PEMIGEWASSET RIVER at PLYMOUTH NH

Gage# 01076500



MONTHLY MEAN FLOW COMPARED TO MEAN OF MONTHLY FLOWS



	2007			2008												2009									
	Mar	Apr	May	June	July	Aug	Sep	Oct	Nov	Dec	Jan	Feb	Mar	April	May	June	July	Aug	Sep	Oct	Nov	Dec	Jan	Feb	Mar
◆ Monthly Mean Flow	1318	4191	2308	773	687	340	381	1251	1871	2298	3542	2909	2927	6221	1938	782	1304	2957	843	1642	2245	3375	2027	1986	2807
■ Mean of Monthly Flow s	1709	3923	2762	1163	643	512	598	1019	1377	1181	917	751	1720	3945	2755	1159	649	535	600	1025	1385	1202	928	763	1731
% of Normal	77%	107%	84%	66%	107%	66%	64%	123%	136%	195%	386%	387%	170%	158%	70%	67%	201%	553%	140%	160%	162%	281%	218%	260%	384%

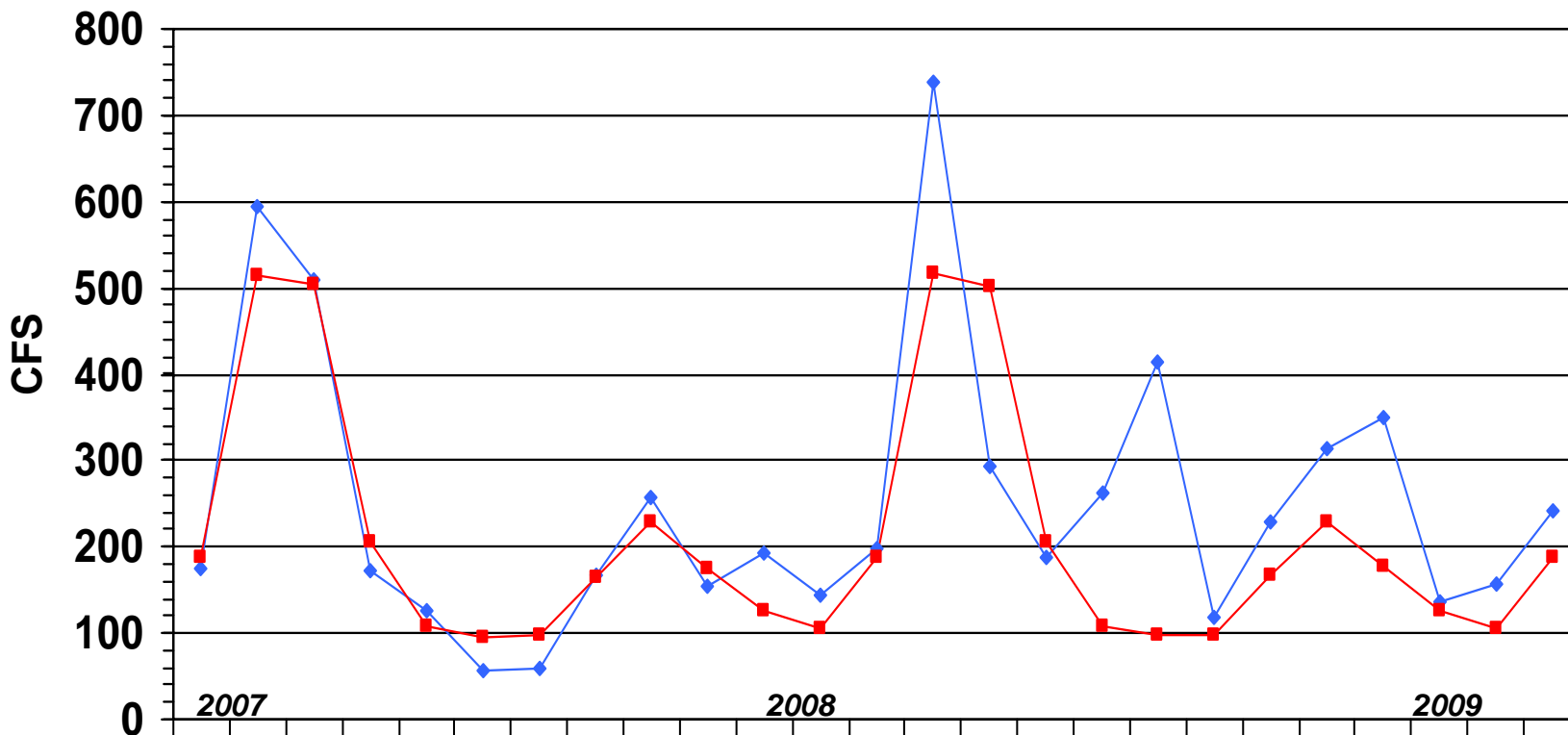
AMMONOOSUC RIVER at BETHLEHEM JUNCTION NH

Gage# 01137500



MONTHLY MEAN FLOW COMPARED TO MEAN OF MONTHLY FLOWS

This station replaces gage# 01137000 which was discontinued by DES at the end of Sept 2004



	2007			2008												2009									
	Mar	Apr	May	June	July	Aug	Sep	Oct	Nov	Dec	Jan	Feb	Mar	April	May	June	July	Aug	Sep	Oct	Nov	Dec	Jan	Feb	Mar
◆ Monthly Mean Flow	176	595	510	173	125	56	60	166	258	155	192	143	197	738	294	189	263	415	119	230	313	350	137	157	242
■ Mean of Monthly Flows	187	515	504	207	107	94	99	165	228	175	125	106	187	518	501	206	109	98	99	166	229	178	126	106	188
% of Normal	94%	115%	101%	84%	117%	59%	61%	101%	113%	89%	154%	135%	105%	142%	59%	92%	241%	423%	120%	138%	137%	197%	109%	148%	129%

STREAMFLOW DATA FOR SELECTED NH STATIONS AS OF APRIL 20, 2009



Station number	Station name	Est. Mean Flow (cfs)	Long Term Median Flow	99% Flow (cfs)	7Q10 Flow (cfs)	Lowest Period of Record Daily Flow (cfs)	% of Median	Below 0.99 Flow?	Below 7Q10 Flow?	Below Record Flow?
Androscoggin River Basin										
01052500	Diamond River near Wentworth Location, NH	963	1,080	22	16	6.8	89%	FALSE	FALSE	FALSE
01053500	Androscoggin River at Errol, NH	1,630	1,780	500	451	0	92%	FALSE	FALSE	FALSE
01054000	Androscoggin River near Gorham, NH	2,580	3,570	1300	1310	795	72%	FALSE	FALSE	FALSE
Saco River Basin										
01064500	Saco River near Conway, NH	1,980	2,640	105	97	66	75%	FALSE	FALSE	FALSE
01064801	BEARCAMP RIVER AT SOUTH TAMWORTH, NH	163	316	6	4.8	4.5	52%	FALSE	FALSE	FALSE
Piscataqua River Basin										
01072800	COCHECO RIVER NEAR ROCHESTER, NH	126	198 --	--	--	2.2	64%	#VALUE!	#VALUE!	FALSE
01073500	LAMPREY RIVER NEAR NEWMARKET, NH	236	497	7	5 --	--	47%	FALSE	FALSE	#VALUE!
Merrimack River Basin										
01074520	EAST BRANCH PEMIGEWASSET RIVER AT LINCOLN, NH	458	806		49	46	57%	FALSE	FALSE	FALSE
01075000	PEMIGEWASSET RIVER AT WOODSTOCK, NH	820	1,400		56 --	--	59%	FALSE	FALSE	
01076000	BAKER RIVER NEAR RUMNEY, NH	342	755		15 --	--	45%	FALSE	FALSE	
01076500	PEMIGEWASSET RIVER AT PLYMOUTH, NH	1,980	3,390		118	45	58%	FALSE	FALSE	FALSE
01078000	SMITH RIVER NEAR BRISTOL, NH	152	373		6.2	2.7	41%	FALSE	FALSE	FALSE
01081000	WINNIPESAUKEE RIVER AT TILTON, NH	1,160	1,010		136	48	115%	FALSE	FALSE	FALSE
01081500	MERRIMACK RIVER AT FRANKLIN JUNCTION, NH	4,830	6,820		551 --	--	71%		FALSE	
01082000	CONTOOCOOK RIVER AT PETERBOROUGH, NH	126	228		6.3 --	--	55%	FALSE	FALSE	
01085000	CONTOOCOOK RIVER NEAR HENNIKER, NH	468 ---			37 --	--		FALSE	FALSE	
01085500	CONTOOCOOK R BL HOPKINTON DAM AT W HOPKINTON, NH	636	1,630		39 --	--	39%	FALSE	FALSE	
01086000	WARNER RIVER AT DAVISVILLE, NH	270	641		5.3 --	--	42%	FALSE	FALSE	
01087000	BLACKWATER RIVER NEAR WEBSTER, NH	282 ---			13.7 --	--		FALSE	FALSE	
01090800	PISCATAQUOG RIVER BL EVERETT DAM, NR E WEARE, NH	97 ---			1.2 --	--		FALSE	FALSE	
01091500	PISCATAQUOG RIVER NEAR GOFFSTOWN, NH	334 ---			8.8 --	--		FALSE	FALSE	
01092000	MERRIMACK R NR GOFFS FALLS, BELOW MANCHESTER, NH	7,000	13,000		644	98*	54%		FALSE	
01094000	SOUHEGAN RIVER AT MERRIMACK, NH	307	520		12.9 --	--	59%	FALSE	FALSE	
Connecticut River Basin										
01129200	CONNECTICUT R BELOW INDIAN STREAM NR PITTSBURG, NH	494	702		42	30	70%	FALSE	FALSE	FALSE
01129500	CONNECTICUT RIVER AT NORTH STRATFORD, NH	2,160	4,320		176	108	50%	FALSE	FALSE	FALSE
01131500	CONNECTICUT RIVER NEAR DALTON, NH	4,490	8,000		389	115	56%	FALSE	FALSE	FALSE
01137500	AMMONOOSUC RIVER AT BETHLEHEM JUNCTION, NH	318	467		28	21	68%	FALSE	FALSE	FALSE
01138500	CONNECTICUT RIVER AT WELLS RIVER, VT	7,000	13,200		690	152*	53%		FALSE	
01144500	CONNECTICUT RIVER AT WEST LEBANON, NH	12,900	18,000	380*	902	82*	72%		FALSE	
01152500	SUGAR RIVER AT WEST CLAREMONT, NH	340	1,070	40	38	14	32%	FALSE	FALSE	FALSE
01154500	CONNECTICUT RIVER AT NORTH WALPOLE, NH	12,400	25,100	260*	1058	115*	49%		FALSE	
01158000	ASHUELOT RIVER BELOW SURRY MT DAM, NEAR KEENE, NH	192	639	4.5	2.7	0.4	30%	FALSE	FALSE	FALSE
01158600	OTTER BROOK BELOW OTTER BROOK DAM, NEAR KEENE, NH	57	203	1.6	1.1	0.3	28%	FALSE	FALSE	FALSE
01160350	ASHUELOT RIVER AT WEST SWANZEY, NH	608	1,030	32 --	--	--	59%	FALSE		

*Flow duration and record low mean daily flow significantly affected by reservoir operations

**Estimated

Source: USGS, NH DES

SUMMARY	Below 0.99 Flow?	Below 7Q10 Flow?	Below Record Flow?
FALSE =	28	32	17
TRUE =	0	0	0

New Hampshire Groundwater Levels for March 2009

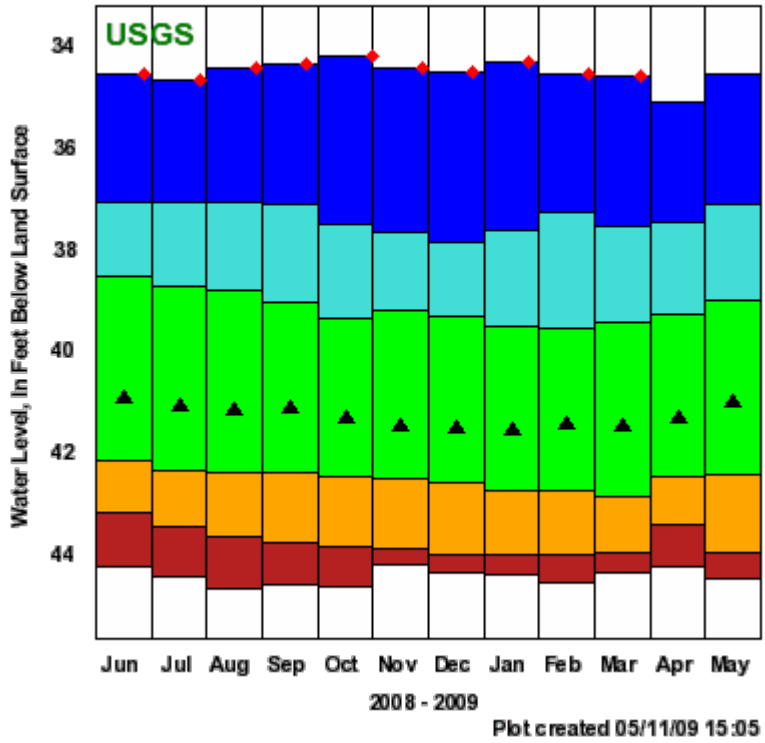


WELL	START OF WATER LEVEL BELOW		NET CHANGE		NET CHANGE IN ONE YEAR (ft)	MEDIAN	RANGE (ft)	DEPARTURE FROM		PERCENT OF RANGE	STATUS
	RECORD	SURFACE DATUM (ft)	IN ONE MONTH (ft)	IN ONE YEAR (ft)				MONTHLY MEDIAN (FT)	RANGE		
ALBANY 14	1995	6.15	+0.80	-0.23	6.34	0.90	+0.19	25.1	NORMAL		
ALBANY 15	1995	8.19	+0.75	-0.20	8.25	1.18	+0.06	5.1	NORMAL		
BARNSTEAD 10	1995	2.16	+0.25	-0.06	2.44	0.83	+0.28	33.7	NORMAL		
CAMPTON 34	1988	11.98	+1.06	-0.12	12.18	1.54	+0.20	13.0	NORMAL		
COLEBROOK 73	1995	7.56	+0.14	----	7.35	0.54	-0.21	-38.9	NORMAL		
CONCORD 2	1963	34.59	-0.06	----	41.51	5.72	+6.92	121.0	ABOVE NORMAL		
CONCORD 4	1966	15.77	+1.10	-0.15	17.43	2.85	+1.66	58.2	ABOVE NORMAL		
DEERFIELD 46	1984	38.15	+0.01	----	38.52	0.73	+0.37	50.7	NORMAL		
ENFIELD 30	1990	2.40	+2.84	+35.79	4.86	2.34	+2.46	105.1	ABOVE NORMAL		
ERROL 1	1966	13.4	+0.7	+1.0	13.2	1.4	-0.2	-14.8	NORMAL		
FRANKLIN 1	1966	10.77	+0.00	+1.23	12.40	3.81	+1.63	42.8	ABOVE NORMAL		
GREENFIELD 75	1995	59.54	-0.17	----	62.22	3.91	+2.68	68.5	ABOVE NORMAL		
HOOKSETT 5	1965	47.24	+1.45	+14.20	47.13	2.66	-0.11	-4.1	NORMAL		
KEENE 2	1963	2.75	+0.39	+41.94	1.81	2.32	-0.94	-40.5	NORMAL		
LANCASTER 1	1966	----	----	----	0.73	----	----	----	----		
LEE 1	1953	29.59	+0.92	----	30.64	2.98	+1.05	35.2	ABOVE NORMAL		
LISBON 19	1990	12.27	----	+16.76	12.97	3.57	+0.70	19.6	ABOVE NORMAL		
NASHUA 218	1964	26.50	+0.32	-13.65	27.54	1.54	+1.04	67.5	ABOVE NORMAL		
NEW DURHAM 53	1986	18.49	+0.65	----	18.67	0.73	+0.18	24.7	NORMAL		
NEW LONDON 1	1947	4.25	+5.28	+21.75	5.81	5.01	+1.56	31.1	NORMAL		
NEWPORT 3	1995	4.91	+1.41	+13.47	4.91	1.36	+0.00	0.0	NORMAL		
NEWPORT 6	1995	4.93	+1.51	-0.39	4.72	1.70	-0.21	-12.4	NORMAL		
OSSIPEE 38	1995	35.12	-0.05	-30.63	35.15	1.22	+0.03	2.5	NORMAL		
SHELBURNE 2	1995	5.09	+0.24	-0.57	4.65	0.85	-0.44	-51.8	BELOW NORMAL		
WARNER 1	1965	28.95	+0.51	+6.25	30.19	1.91	+1.24	64.9	ABOVE NORMAL		

Source: USGS, NH DES

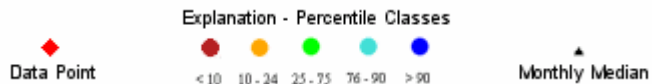
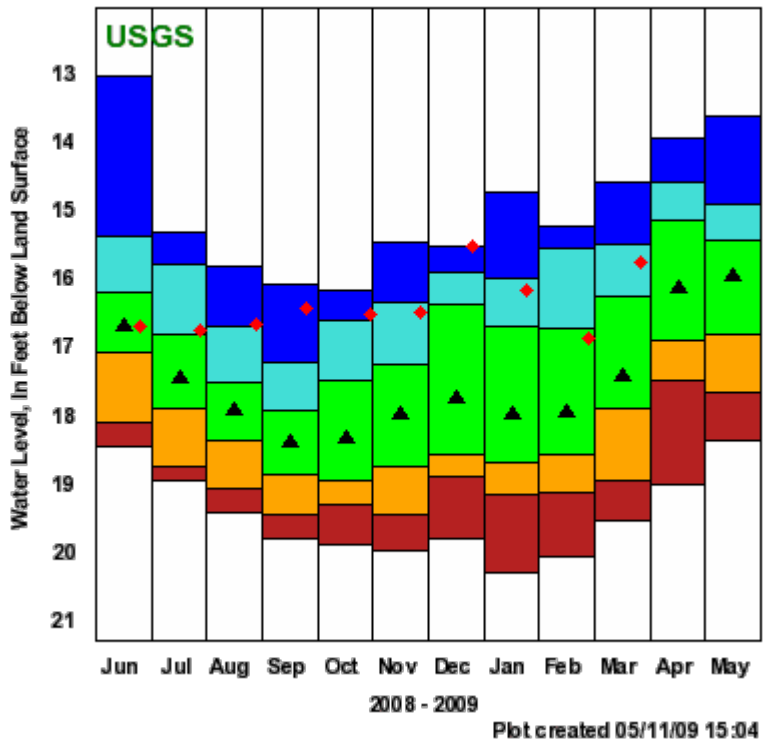
CONCORD 2

431224071303601 - NH-CVV 2



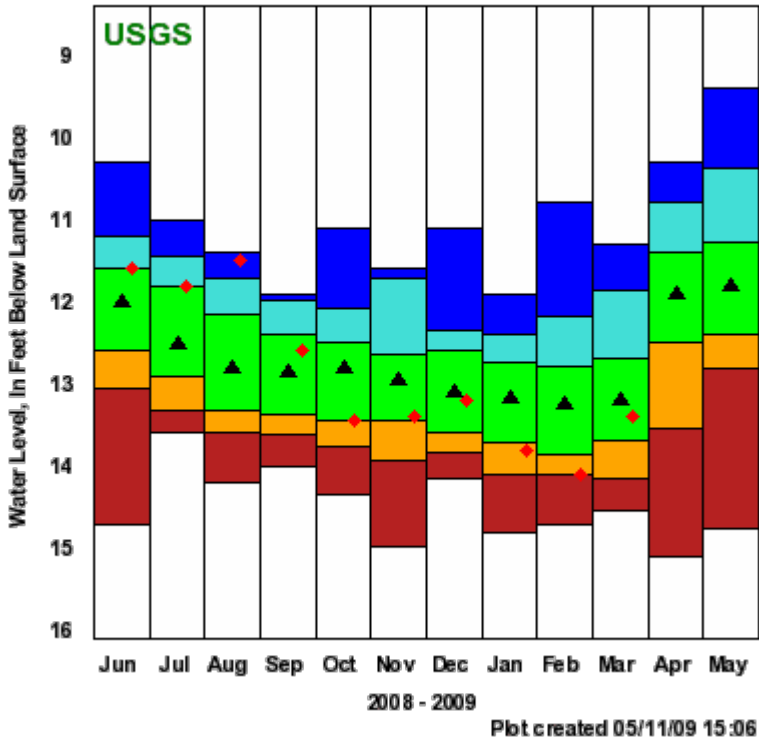
CONCORD 4

431049071324301 - NH-CVV 4



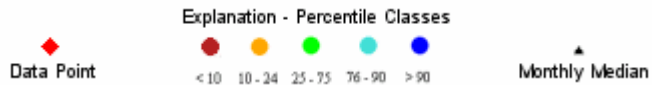
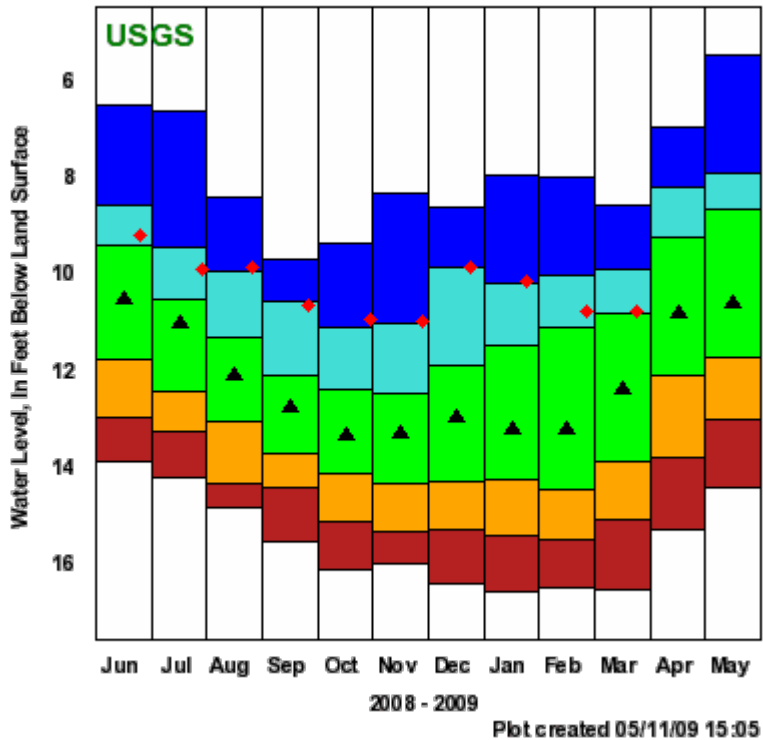
ERROL 1

444733071094901 - NH-ETW 1



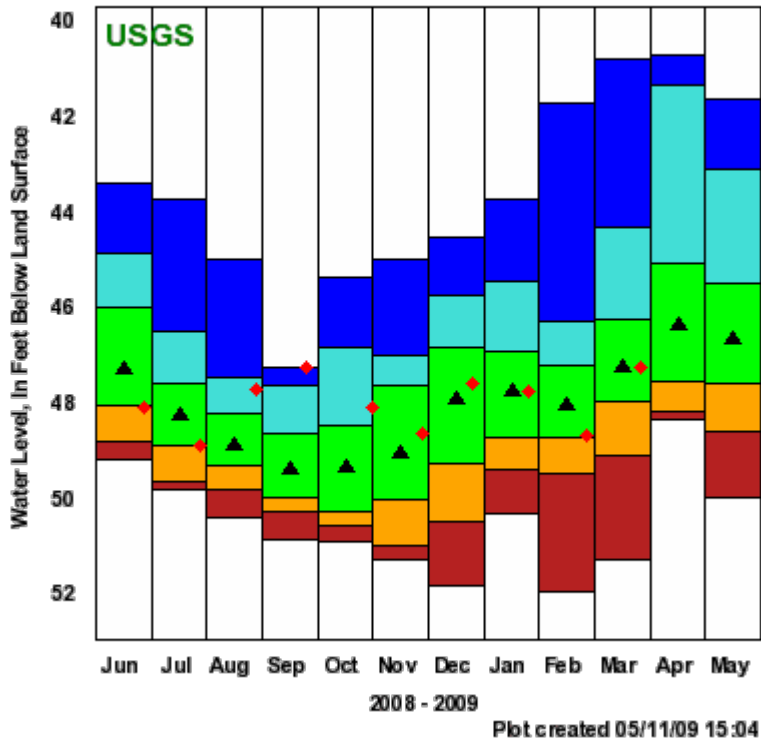
FRANKLIN 1

432428071390701 - NH-FKW 1



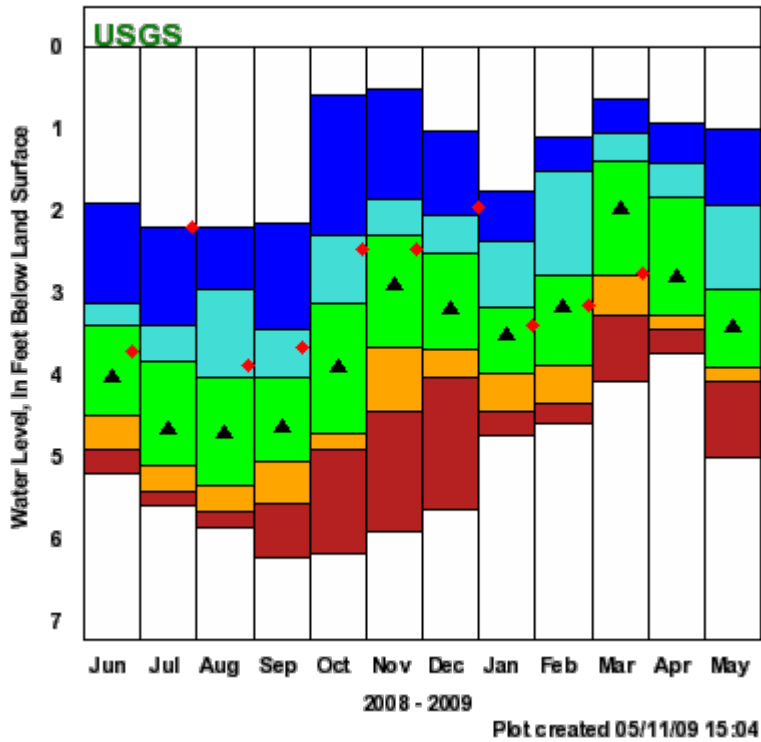
HOOKSETT 5

430235071275501 - NH-HTW 5



KEENE 2

425543072175801 - NH-KEW 2

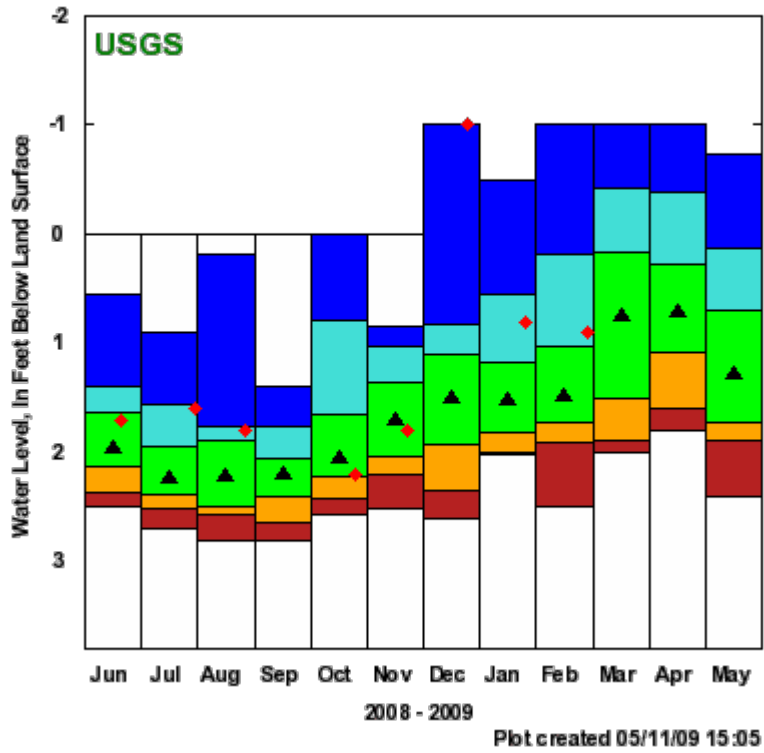


Explanation - Percentile Classes

- ◆ Data Point
- <10
- 10 - 24
- 25 - 75
- 76 - 90
- >90
- ▲ Monthly Median

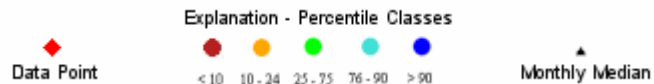
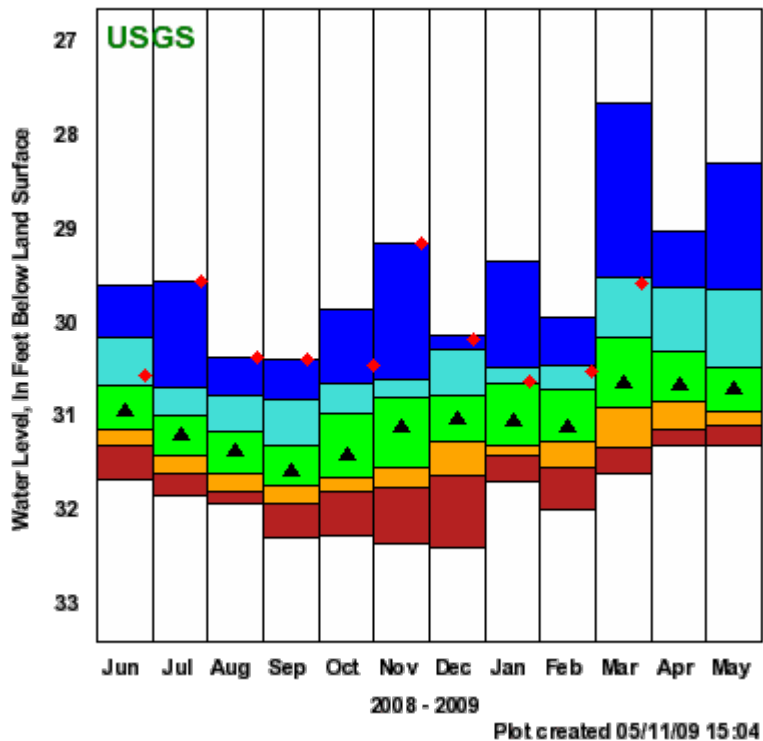
LANCASTER 1

442830071321001 - NH-LCW 1



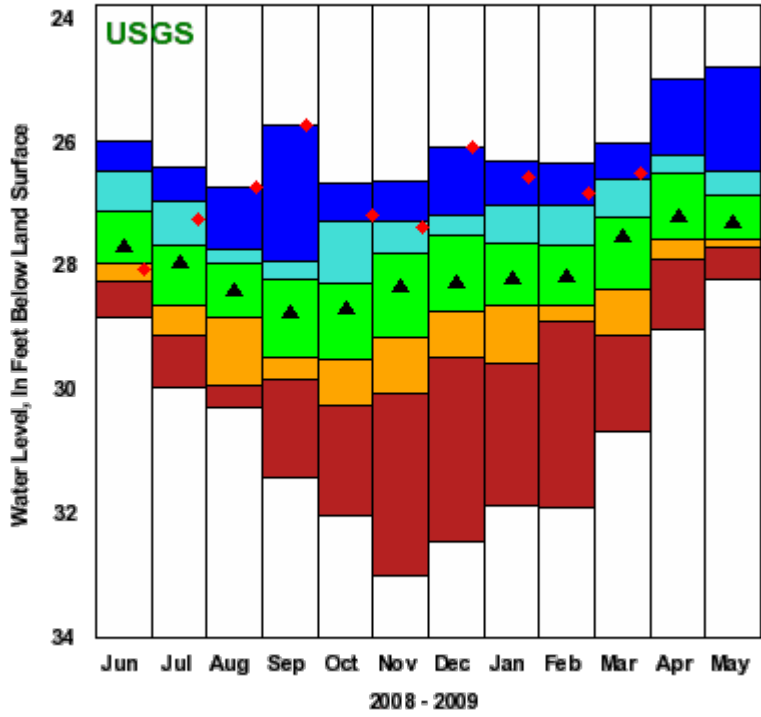
LEE 1

430721071005001 - NH-LIW 1



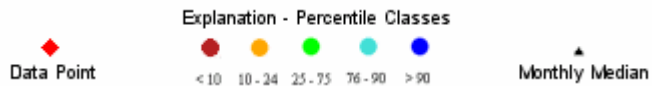
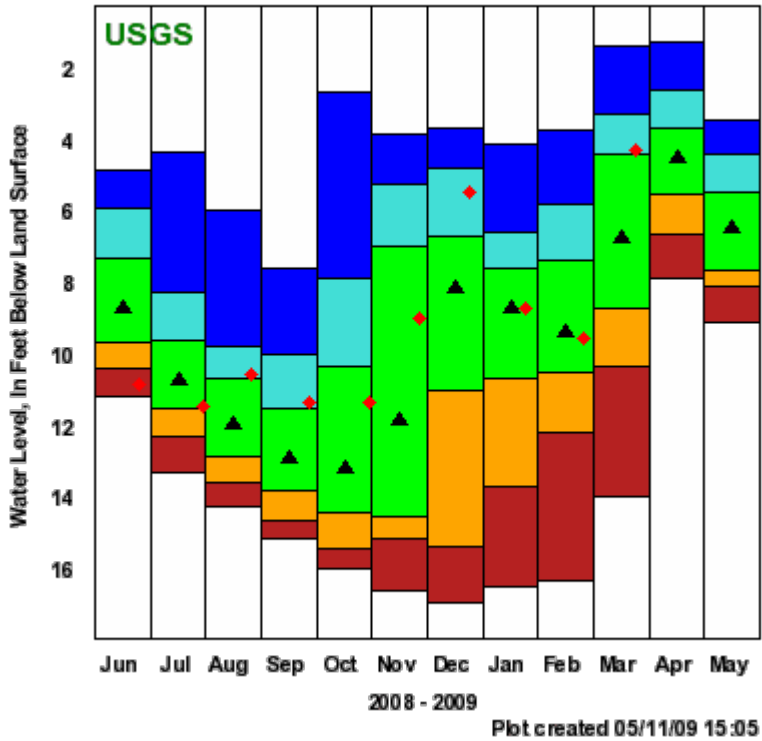
NASHUA 218

424800071295301 - NH-NAW 218



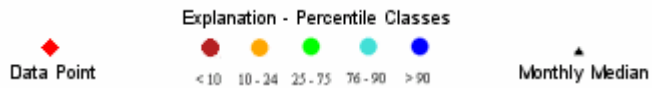
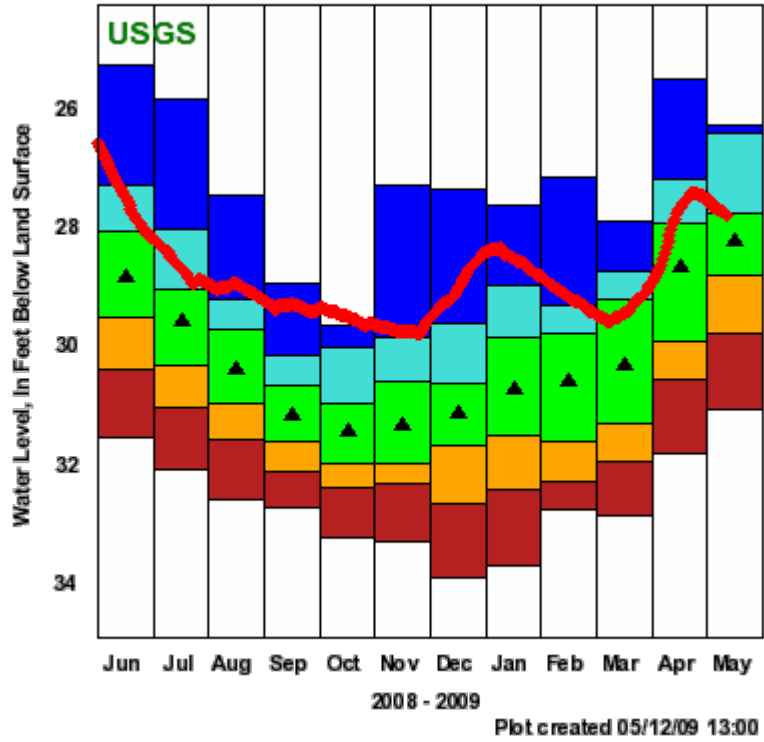
NEW LONDON 1

432343071570901 - NH-NLW 1

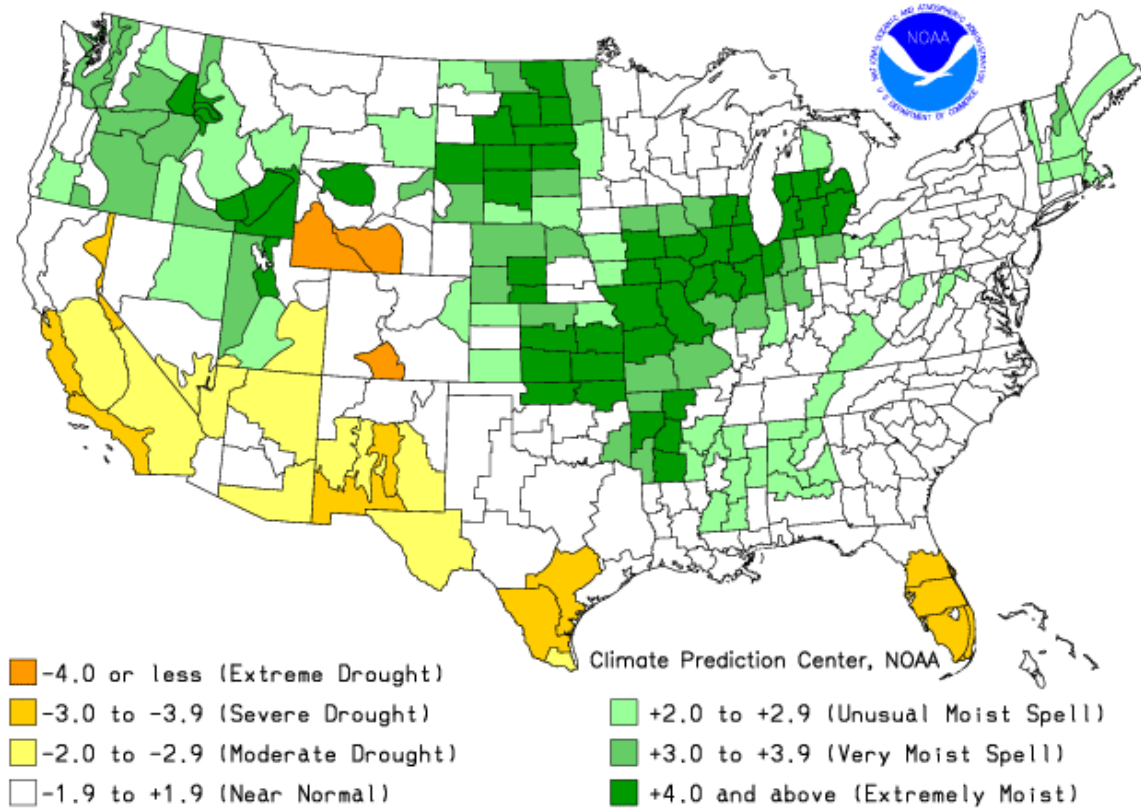


WARNER 1

431540071452801 - NH-WCW 1 Warner, NH



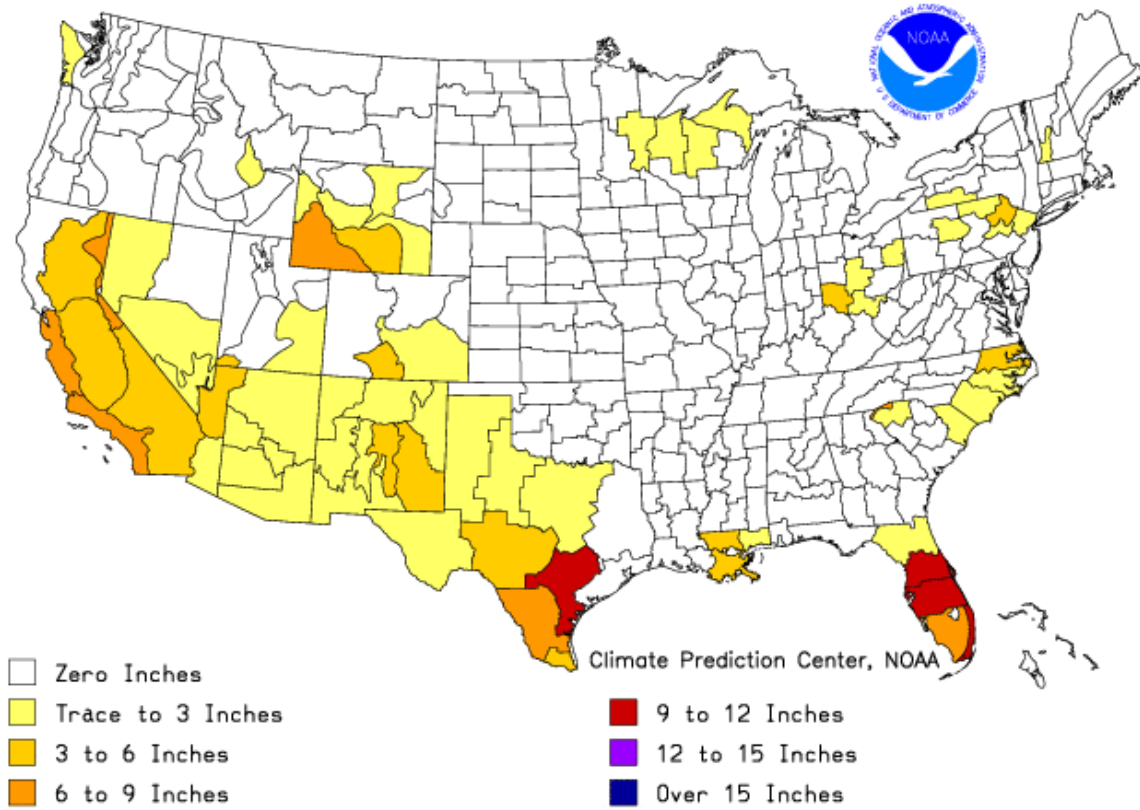
Drought Severity Index by Division
Weekly Value for Period Ending MAY 9, 2009
Long Term Palmer



THE PALMER DROUGHT SEVERITY INDEX

The Palmer Index uses temperature and rainfall information in a formula to determine dryness. The advantage of the Palmer Index is that it is standardized to local climate.

Additional Precip. Needed (In.) to Bring PDI to -0.5
Weekly Value for Period Ending MAY 9, 2009
Long Term Palmer Drought Severity Index (PDI)



This is the amount of rainfall required in a week's time to bring the index back to zero inches required.