



The State of New Hampshire
DEPARTMENT OF ENVIRONMENTAL SERVICES



Thomas S. Burack, Commissioner

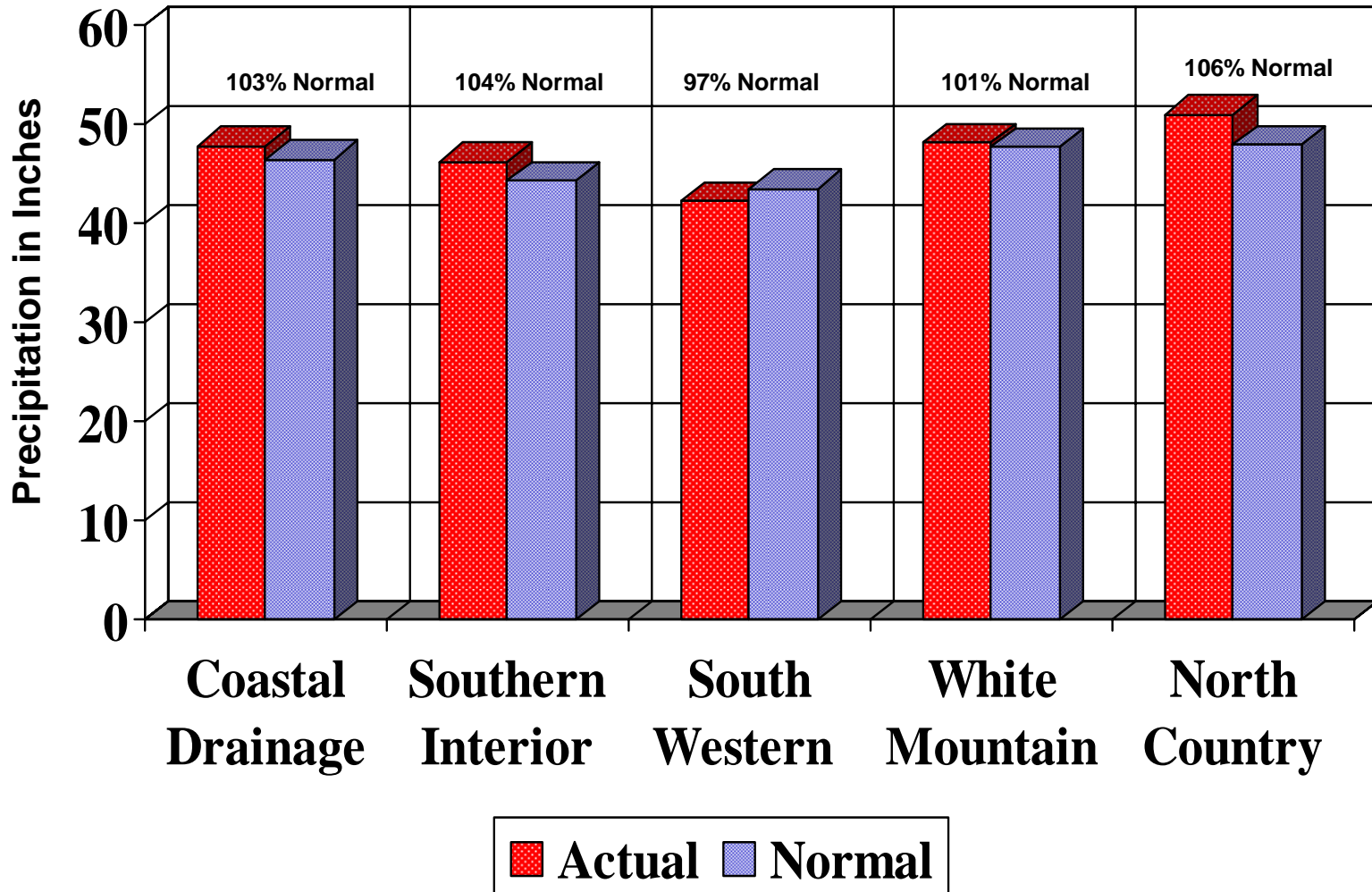
**AGGREGATED PRECIPITATION DATA for N.H.
 DROUGHT MANAGEMENT AREAS**

	Actual Rainfall (inches)	Normal Rainfall (inches)	Deviation from Normal (inches)	Percent of Normal
<u>Coastal Drainage:</u> Rockingham, Strafford counties				
four month	11.86	15.07	-3.22	79%
six month	20.73	23.60	-2.87	88%
nine month	35.74	35.28	0.47	101%
twelve month	47.76	46.46	1.30	103%
<u>Southern Interior:</u> Belknap, Hillsborough, Merrimack counties				
four month	10.70	13.82	-3.12	77%
six month	19.52	21.48	-1.96	91%
nine month	34.77	32.90	1.87	106%
twelve month	46.25	44.34	1.90	104%
<u>South Western:</u> Cheshire, Sullivan counties				
four month	9.13	13.25	-4.12	69%
six month	17.40	20.37	-2.97	85%
nine month	30.75	31.80	-1.06	97%
twelve month	42.20	43.53	-1.33	97%
<u>White Mountain:</u> Carroll, Grafton counties				
four month	10.04	14.43	-4.40	70%
six month	19.42	22.52	-3.10	86%
nine month	34.39	35.09	-0.70	98%
twelve month	48.12	47.68	0.44	101%
<u>North Country:</u> Coos county				
four month	9.93	13.58	-3.65	73%
six month	19.96	21.57	-1.61	93%
nine month	33.57	34.65	-1.08	97%
twelve month	50.99	47.93	3.06	106%

four month period : January 2009 - April 2009
 six month period : November 2008 - April 2009
 nine month period : August 2008 - April 2009
 twelve month period: May 2008 - April 2009

Source: Northeast River Forecast Center, NH Des Dam Bureau

TWELVE MONTH AGGREGATED PRECIPITATION DATA for N.H. DROUGHT MANAGEMENT AREAS from May 2008 through April 2009





MONTHLY PRECIPITATION DATA FOR N.H COUNTIES

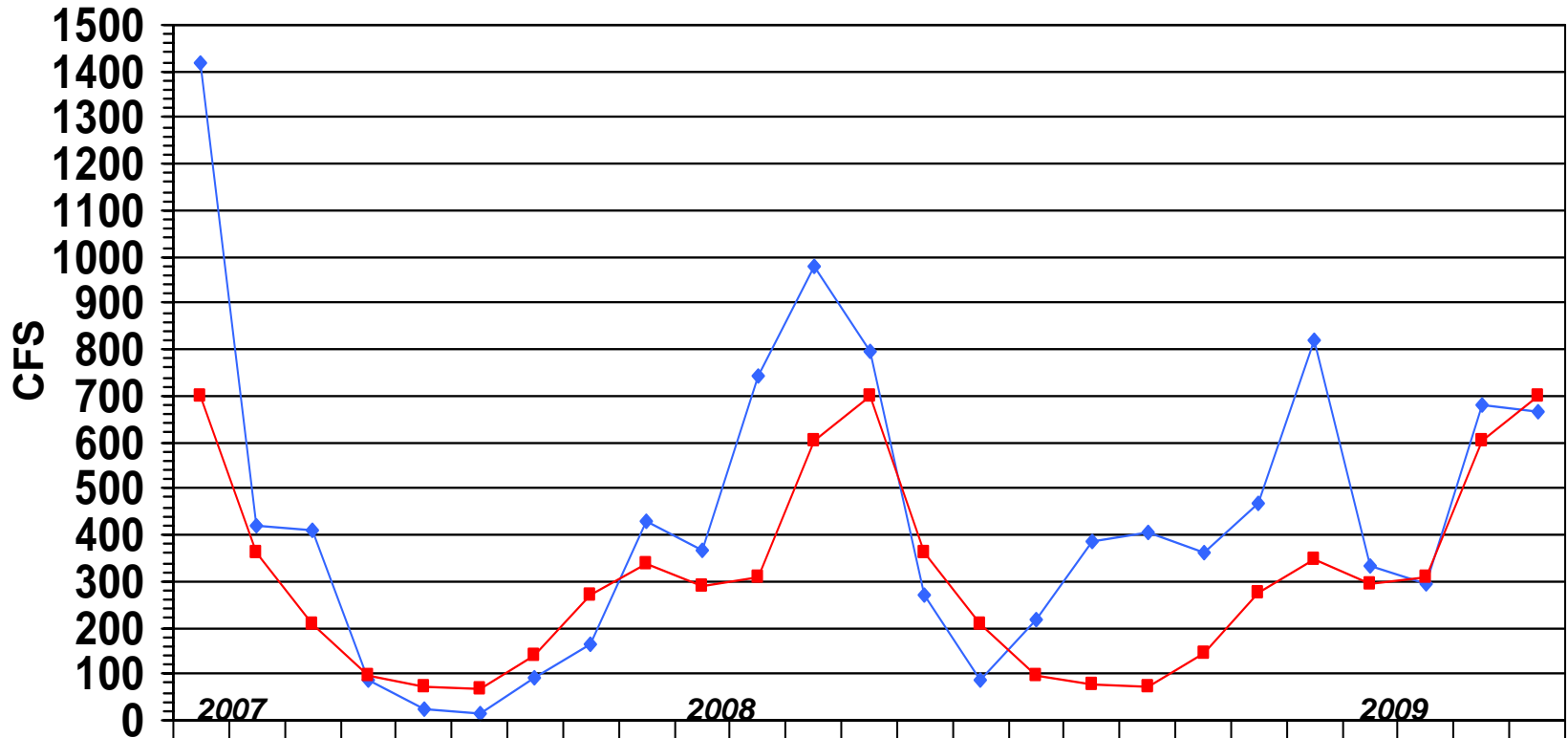
		2008	2009										
		MAY	JUNE	JULY	AUG	SEPT	OCT	NOV	DEC	JAN	FEB	MARCH	APRIL
<u>Coastal drainage</u>													
STRAFFORD	actual	0.78	5.74	5.11	3.58	8.00	2.54	4.62	3.76	2.33	2.39	2.71	3.94
	normal	3.88	3.77	3.75	3.69	3.77	4.39	4.71	3.99	3.68	3.21	4.02	4.39
	deviation	-3.10	1.97	1.36	-0.11	4.23	-1.85	-0.09	-0.23	-1.35	-0.82	-1.31	-0.45
ROCKINGHAM	actual	1.21	4.72	6.47	4.18	9.03	2.70	4.55	4.81	3.05	2.30	2.93	4.06
	normal	3.69	3.68	3.59	3.55	3.76	4.20	4.42	3.93	3.77	3.09	3.86	4.12
	deviation	-2.48	1.04	2.88	0.63	5.27	-1.50	0.13	0.88	-0.72	-0.79	-0.93	-0.06
Average	actual	1.00	5.23	5.79	3.88	8.52	2.62	4.59	4.29	2.69	2.35	2.82	4.00
	normal	3.79	3.73	3.67	3.62	3.77	4.30	4.57	3.96	3.73	3.15	3.94	4.26
	deviation	-2.79	1.51	2.12	0.26	4.75	-1.68	0.02	0.33	-1.04	-0.81	-1.12	-0.26
<u>Southern Interior</u>													
HILLSBOROUGH	actual	0.90	4.42	6.21	3.90	7.94	2.60	4.28	5.36	2.77	1.72	2.95	3.65
	normal	3.82	3.75	3.75	3.78	3.67	4.16	4.18	3.84	3.80	3.07	3.88	3.89
	deviation	-2.92	0.67	2.46	0.12	4.27	-1.56	0.10	1.52	-1.03	-1.35	-0.93	-0.24
MERRIMACK	actual	0.63	5.77	5.38	4.74	8.42	3.08	4.61	4.71	2.72	2.08	3.20	3.64
	normal	3.84	3.66	3.81	3.78	3.52	3.97	3.97	3.56	3.49	2.79	3.51	3.66
	deviation	-3.21	2.11	1.57	0.96	4.90	-0.89	0.64	1.15	-0.77	-0.71	-0.31	-0.02
BELKNAP	actual	0.59	5.97	4.55	5.35	7.04	2.70	4.24	3.25	1.57	2.00	2.51	3.29
	normal	3.82	3.79	4.08	3.84	3.55	4.00	3.94	3.50	3.52	2.76	3.42	3.66
	deviation	-3.23	2.18	0.47	1.51	3.49	-1.30	0.30	-0.25	-1.95	-0.76	-0.91	-0.37
Average	actual	0.71	5.39	5.38	4.66	7.80	2.79	4.38	4.44	2.35	1.93	2.89	3.53
	normal	3.83	3.73	3.88	3.80	3.58	4.04	4.03	3.63	3.60	2.87	3.60	3.74
	deviation	-3.12	1.65	1.50	0.86	4.22	-1.25	0.35	0.81	-1.25	-0.94	-0.72	-0.21
<u>South Western</u>													
CHESHIRE	actual	0.88	4.68	5.93	3.47	6.13	3.04	3.15	4.87	2.16	1.21	2.67	2.89
	normal	3.97	3.81	4.03	4.05	3.57	3.82	3.80	3.51	3.64	2.82	3.60	3.64
	deviation	-3.09	0.87	1.90	-0.58	2.56	-0.78	-0.65	1.36	-1.48	-1.61	-0.93	-0.75
SULLIVAN	actual	0.78	5.27	5.37	4.33	5.78	3.95	3.27	5.24	2.50	1.51	2.55	2.77
	normal	3.90	3.75	4.00	3.93	3.63	3.87	3.67	3.26	3.27	2.67	3.33	3.52
	deviation	-3.12	1.52	1.37	0.40	2.15	0.08	-0.40	1.98	-0.77	-1.16	-0.78	-0.75
Average	actual	0.83	4.98	5.65	3.90	5.96	3.50	3.21	5.06	2.33	1.36	2.61	2.83
	normal	3.94	3.78	4.02	3.99	3.60	3.85	3.74	3.39	3.46	2.75	3.47	3.58
	deviation	-3.11	1.20	1.64	-0.09	2.36	-0.35	-0.53	1.67	-1.13	-1.39	-0.86	-0.75
<u>White Mountain</u>													
GRAFTON	actual	1.50	5.88	7.42	6.18	4.63	4.12	3.49	4.66	1.84	1.88	2.27	3.20
	normal	4.01	4.26	4.34	4.43	4.05	4.19	4.21	3.66	3.64	2.79	3.60	3.72
	deviation	-2.51	1.62	3.08	1.75	0.58	-0.07	-0.72	1.00	-1.80	-0.91	-1.33	-0.52
CARROLL	actual	1.17	5.60	5.90	5.54	6.51	2.96	5.62	4.99	2.20	2.59	2.45	3.64
	normal	4.19	4.14	4.25	4.21	3.88	4.38	4.33	3.97	4.01	3.05	4.00	4.05
	deviation	-3.02	1.46	1.65	1.33	2.63	-1.42	1.29	1.02	-1.81	-0.46	-1.55	-0.41
Average	actual	1.34	5.74	6.66	5.86	5.57	3.54	4.56	4.83	2.02	2.24	2.36	3.42
	normal	4.10	4.20	4.30	4.32	3.97	4.29	4.27	3.82	3.83	2.92	3.80	3.89
	deviation	-2.77	1.54	2.37	1.54	1.61	-0.75	0.29	1.01	-1.81	-0.69	-1.44	-0.47
<u>North Country</u>													
COOS	actual	2.46	7.28	7.68	5.62	3.84	4.15	4.84	5.19	2.16	2.88	1.95	2.94
	normal	4.14	4.61	4.53	4.70	4.25	4.13	4.24	3.75	3.61	2.79	3.57	3.61
	deviation	-1.68	2.67	3.15	0.92	-0.41	0.02	0.60	1.44	-1.45	0.09	-1.62	-0.67

LAMPREY RIVER near NEWMARKET NH

Gage# 01073500



MONTHLY MEAN FLOW COMPARED TO MEAN OF MONTHLY FLOWS



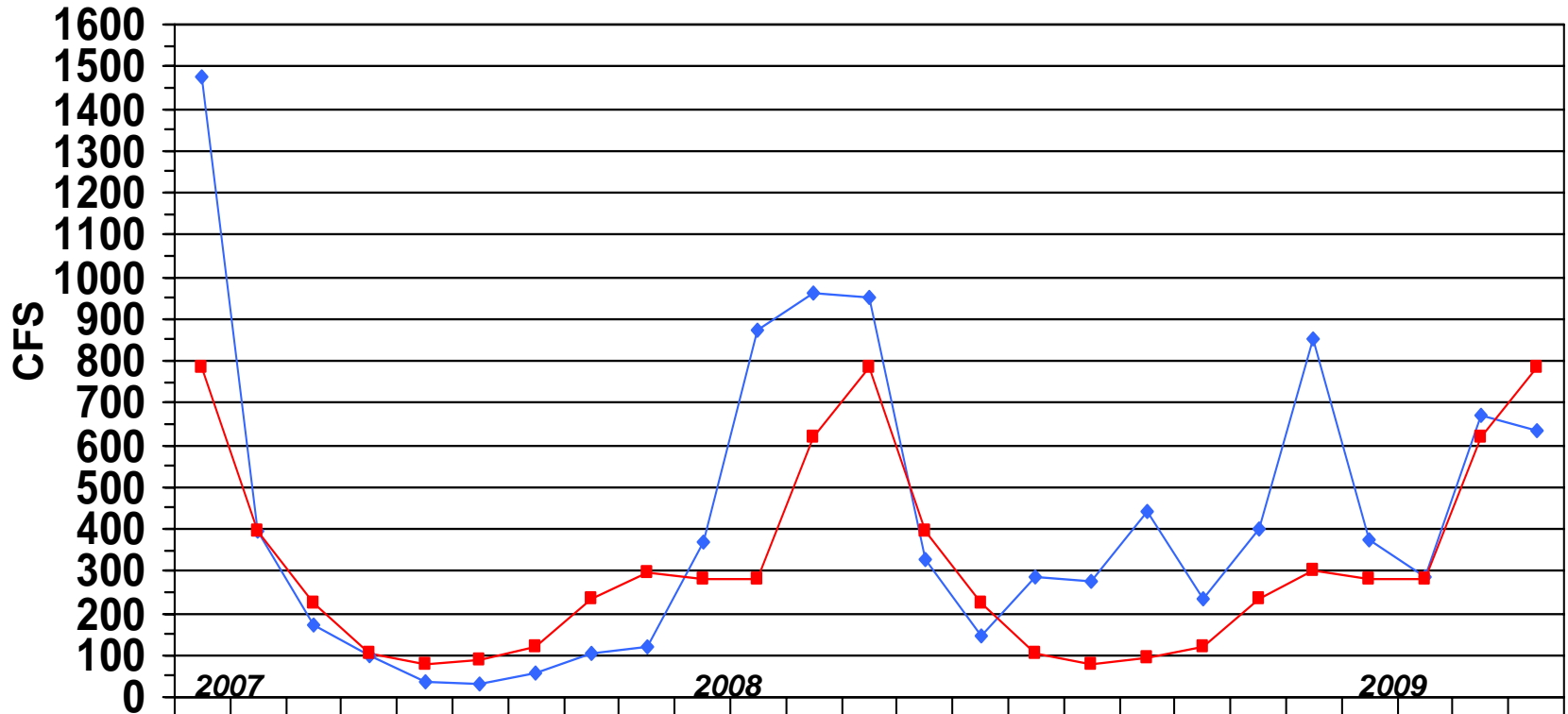
	2007			2008												2009									
	Apr	May	June	July	Aug	Sep	Oct	Nov	Dec	Jan	Feb	Mar	April	May	June	July	Aug	Sep	Oct	Nov	Dec	Jan	Feb	Mar	Apr
◆ Monthly Mean Flow	1418	422	409	89	24	13	91	164	427	367	743	977	798	272	85	218	387	406	361	466	820	332	293	681	664
■ Mean of Monthly Flow s	700	363	209	95	70	69	142	272	340	291	307	601	701	362	207	96	75	74	145	275	346	292	307	602	700
% of Normal	203%	116%	195%	93%	34%	19%	64%	60%	126%	126%	242%	162%	114%	75%	41%	227%	516%	549%	249%	169%	237%	114%	95%	113%	95%

SOUHEGAN RIVER at MERRIMACK NH

Gage# 01094000



MONTHLY MEAN FLOW COMPARED TO MEAN OF MONTHLY FLOWS

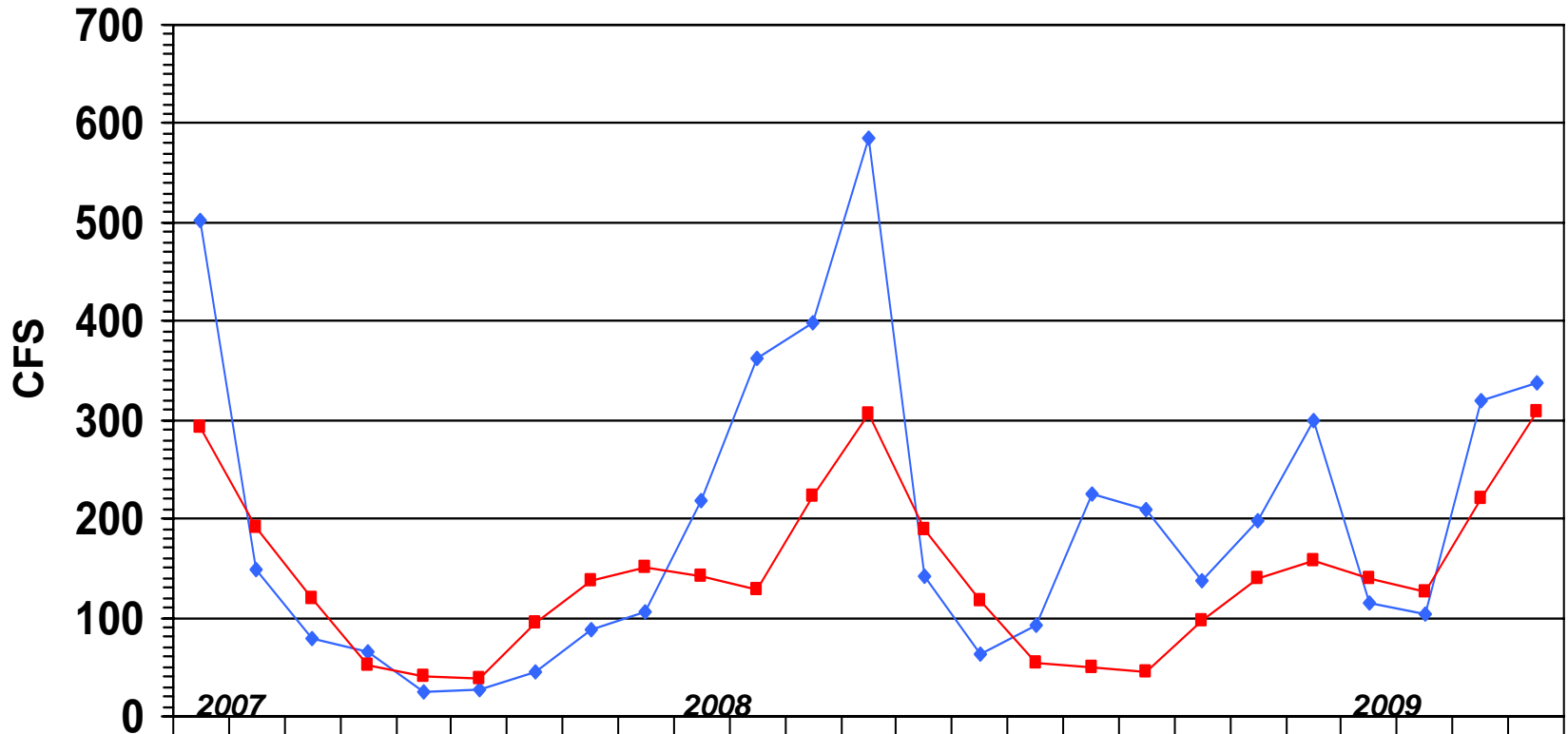


	2007				2008								2009												
	Apr	May	June	July	Aug	Sep	Oct	Nov	Dec	Jan	Feb	Mar	April	May	June	July	Aug	Sep	Oct	Nov	Dec	Jan	Feb	Mar	Apr
◆ Monthly Mean Flow	1474	397	171	98	34	33	58	105	118	369	873	961	950	328	144	288	275	441	233	398	850	374	284	669	636
■ Mean of Monthly Flow s	782	395	223	103	77	88	119	234	294	280	281	620	784	394	222	105	80	92	121	236	301	281	281	620	782
% of Normal	188%	100%	77%	95%	44%	38%	48%	45%	40%	132%	311%	155%	121%	83%	65%	274%	344%	479%	192%	169%	282%	133%	101%	108%	81%

SOUCOOK RIVER at PEMBROKE ROAD near CONCORD NH, Gage# 01089100



MONTHLY MEAN FLOW COMPARED TO MEAN OF MONTHLY FLOWS



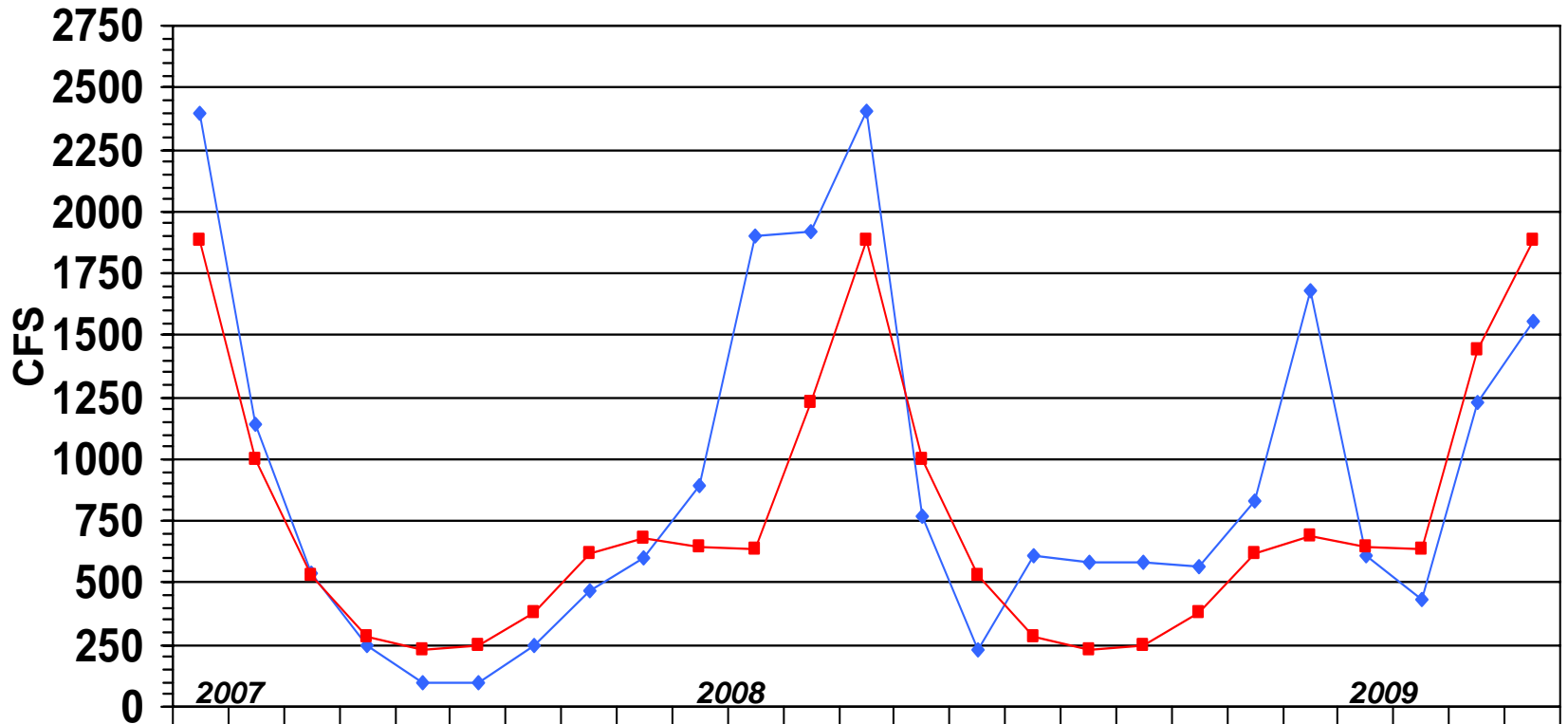
	2007			2008												2009									
	Apr	May	June	July	Aug	Sep	Oct	Nov	Dec	Jan	Feb	Mar	April	May	June	July	Aug	Sep	Oct	Nov	Dec	Jan	Feb	Mar	Apr
◆ Monthly Mean Flow	501	148	78	66	25	26	45	87	105	219	363	398	586	142	64	92	226	210	138	198	300	114	104	320	338
■ Mean of Monthly Flows	293	192	119	51	40	38	94	137	150	141	128	222	307	189	117	53	49	46	96	140	157	139	127	220	309
% of Normal	171%	77%	66%	129%	62%	68%	48%	64%	70%	155%	284%	179%	191%	75%	54%	174%	461%	456%	144%	141%	191%	82%	82%	145%	109%

ASHUELOT RIVER at HINSDALE NH

Gage# 01161000



MONTHLY MEAN FLOW COMPARED TO MEAN OF MONTHLY FLOWS



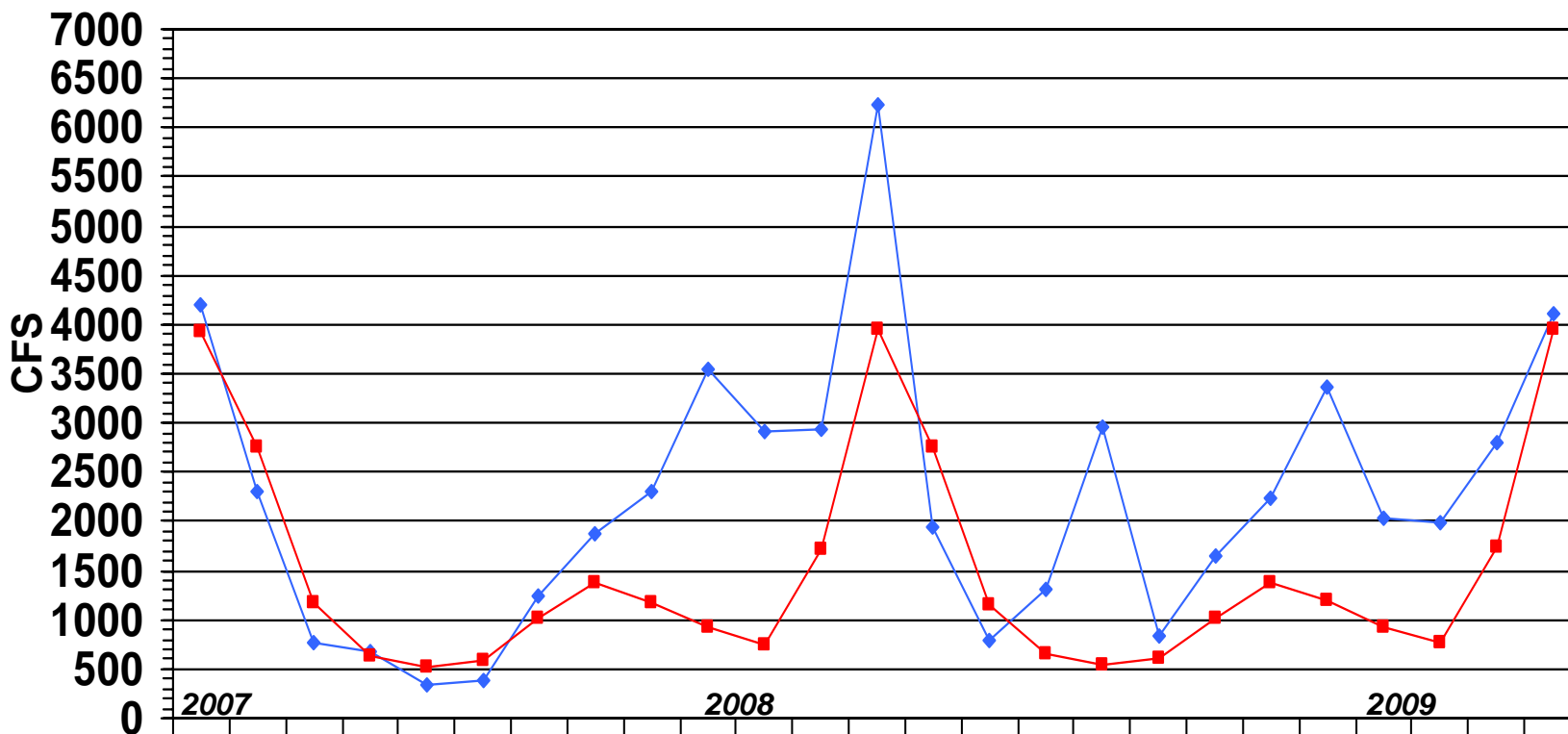
◆ Monthly Mean Flow	2393	1142	536	252	96	99	244	471	604	894	1900	1918	2407	765	226	608	585	582	568	829	1676	611	429	1233	1560
■ Mean of Monthly Flows	1881	997	534	282	229	245	381	619	684	648	639	1231	1886	995	530	286	232	249	383	621	694	648	637	1444	1883
% of Normal	127%	115%	100%	89%	42%	40%	62%	76%	88%	138%	297%	156%	128%	77%	43%	213%	252%	234%	148%	133%	241%	94%	67%	117%	83%

PEMIGEWASSET RIVER at PLYMOUTH NH

Gage# 01076500



MONTHLY MEAN FLOW COMPARED TO MEAN OF MONTHLY FLOWS



	2007			2008												2009									
	Apr	May	June	July	Aug	Sep	Oct	Nov	Dec	Jan	Feb	Mar	April	May	June	July	Aug	Sep	Oct	Nov	Dec	Jan	Feb	Mar	Apr
◆ Monthly Mean Flow	4191	2308	773	687	340	381	1251	1871	2298	3542	2909	2927	6221	1938	782	1304	2957	843	1642	2245	3375	2027	1986	2807	4110
■ Mean of Monthly Flows	3923	2762	1163	643	512	598	1019	1377	1181	917	751	1720	3945	2755	1159	649	535	600	1025	1385	1202	928	763	1731	3946
% of Normal	107%	84%	66%	107%	66%	64%	123%	136%	195%	386%	387%	170%	158%	70%	67%	201%	553%	140%	160%	162%	281%	218%	260%	384%	104%

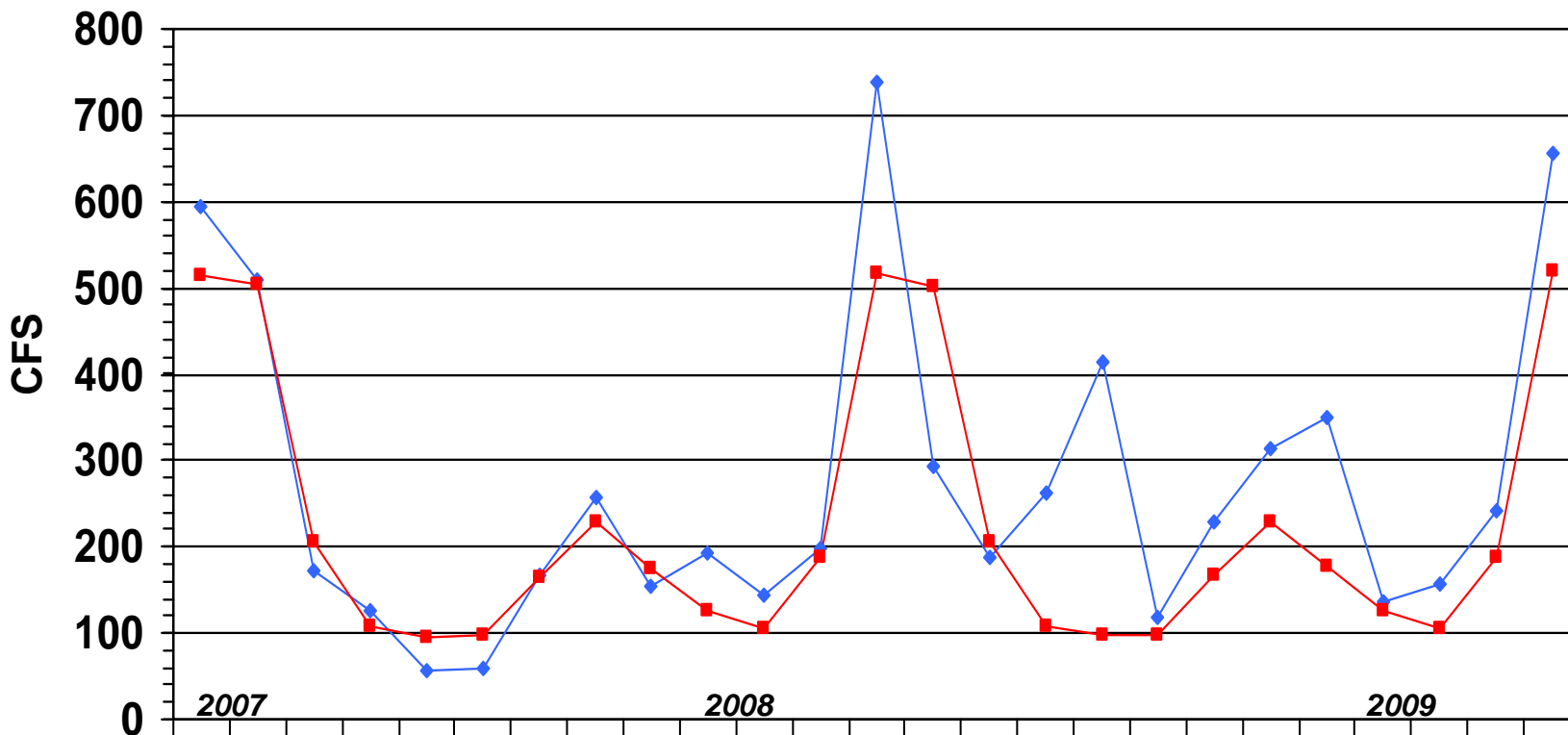
AMMONOOSUC RIVER at BETHLEHEM JUNCTION NH

Gage# 01137500



MONTHLY MEAN FLOW COMPARED TO MEAN OF MONTHLY FLOWS

This station replaces gage# 01137000 which was discontinued by DES at the end of Sept 2004



	2007			2008												2009									
	Apr	May	June	July	Aug	Sep	Oct	Nov	Dec	Jan	Feb	Mar	April	May	June	July	Aug	Sep	Oct	Nov	Dec	Jan	Feb	Mar	Apr
◆ Monthly Mean Flow	595	510	173	125	56	60	166	258	155	192	143	197	738	294	189	263	415	119	230	313	350	137	157	242	656
■ Mean of Monthly Flows	515	504	207	107	94	99	165	228	175	125	106	187	518	501	206	109	98	99	166	229	178	126	106	188	520
% of Normal	115%	101%	84%	117%	59%	61%	101%	113%	89%	154%	135%	105%	142%	59%	92%	241%	423%	120%	138%	137%	197%	109%	148%	129%	126%

STREAMFLOW DATA FOR SELECTED NH STATIONS AS OF MAY 8, 2009



Station number	Station name	Est. Mean Flow (cfs)	Long Term Median Flow	99% Flow (cfs)	7Q10 Flow (cfs)	Lowest Period of Record Daily Flow (cfs)	% of Median	Below 0.99 Flow?	Below 7Q10 Flow?	Below Record Flow?
Androscoggin River Basin										
01052500	Diamond River near Wentworth Location, NH	977	909	22	16	6.8	107%	FALSE	FALSE	FALSE
01053500	Androscoggin River at Errol, NH	1,650	2,460	500	451	0	67%	FALSE	FALSE	FALSE
01054000	Androscoggin River near Gorham, NH	3,360	3,680	1300	1310	795	91%	FALSE	FALSE	FALSE
Saco River Basin										
01064500	Saco River near Conway, NH	2,250	2,260	105	97	66	100%	FALSE	FALSE	FALSE
01064801	BEARCAMP RIVER AT SOUTH TAMWORTH, NH	233	166	6	4.8	4.5	140%	FALSE	FALSE	FALSE
Piscataqua River Basin										
01072800	COCHECO RIVER NEAR ROCHESTER, NH	373	147 --	--	--	2.2	254%	#VALUE!	#VALUE!	FALSE
01073500	LAMPREY RIVER NEAR NEWMARKET, NH	725	297	7	5 --		244%	FALSE	FALSE	#VALUE!
Merrimack River Basin										
01074520	EAST BRANCH PEMIGEWASSET RIVER AT LINCOLN, NH	849	828		49	46	103%	FALSE	FALSE	FALSE
01075000	PEMIGEWASSET RIVER AT WOODSTOCK, NH	1,380	1,220		56 --		113%	FALSE	FALSE	#VALUE!
01076000	BAKER RIVER NEAR RUMNEY, NH	438	381		15 --		115%	FALSE	FALSE	#VALUE!
01076500	PEMIGEWASSET RIVER AT PLYMOUTH, NH	2,960	2,810		118	45	105%	FALSE	FALSE	FALSE
01078000	SMITH RIVER NEAR BRISTOL, NH	254	182		6.2	2.7	140%	FALSE	FALSE	FALSE
01081000	WINNIPESAUKEE RIVER AT TILTON, NH	575	813		136	48	71%	FALSE	FALSE	FALSE
01081500	MERRIMACK RIVER AT FRANKLIN JUNCTION, NH	4,680	4,710		551 --		99%	FALSE	FALSE	#VALUE!
01082000	CONTOOCOOK RIVER AT PETERBOROUGH, NH	337	135		6.3 --		250%	FALSE	FALSE	#VALUE!
01085000	CONTOOCOOK RIVER NEAR HENNIKER, NH	1,390 ---			37 --			FALSE	FALSE	#VALUE!
01085500	CONTOOCOOK R BL HOPKINTON DAM AT W HOPKINTON, NH	1,190	780		39 --		153%	FALSE	FALSE	#VALUE!
01086000	WARNER RIVER AT DAVISVILLE, NH	399	300		5.3 --		133%	FALSE	FALSE	#VALUE!
01087000	BLACKWATER RIVER NEAR WEBSTER, NH	459 ---			13.7 --			FALSE	FALSE	#VALUE!
01090800	PISCATAQUOG RIVER BL EVERETT DAM, NR E WEARE, NH	182 ---			1.2 --			FALSE	FALSE	#VALUE!
01091500	PISCATAQUOG RIVER NEAR GOFFSTOWN, NH	797 ---			8.8 --			FALSE	FALSE	#VALUE!
01092000	MERRIMACK R NR GOFFS FALLS, BELOW MANCHESTER, NH	9,410	8,169		644	98*	115%	FALSE	FALSE	#VALUE!
01094000	SOUHEGAN RIVER AT MERRIMACK, NH	854	322		12.9 --		265%	FALSE	FALSE	#VALUE!
Connecticut River Basin										
01129200	CONNECTICUT R BELOW INDIAN STREAM NR PITTSBURG, NH	1,190	406		42	30	293%	FALSE	FALSE	FALSE
01129500	CONNECTICUT RIVER AT NORTH STRATFORD, NH	3,350	2,270		176	108	148%	FALSE	FALSE	FALSE
01131500	CONNECTICUT RIVER NEAR DALTON, NH	6,450	5,150		389	115	125%	FALSE	FALSE	FALSE
01137500	AMMONOOSUC RIVER AT BETHLEHEM JUNCTION, NH	536	447		28	21	120%	FALSE	FALSE	FALSE
01138500	CONNECTICUT RIVER AT WELLS RIVER, VT	12,000	8,650		690	152*	139%	FALSE	FALSE	#VALUE!
01144500	CONNECTICUT RIVER AT WEST LEBANON, NH	16,200	12,900	380*	902	82*	126%	#VALUE!	FALSE	#VALUE!
01152500	SUGAR RIVER AT WEST CLAREMONT, NH	445	526	40	38	14	85%	FALSE	FALSE	FALSE
01154500	CONNECTICUT RIVER AT NORTH WALPOLE, NH	15,100	15,800	260*	1058	115*	96%	#VALUE!	FALSE	#VALUE!
01158000	ASHUELOT RIVER BELOW SURRY MT DAM, NEAR KEENE, NH	218	241	4.5	2.7	0.4	90%	FALSE	FALSE	FALSE
01158600	OTTER BROOK BELOW OTTER BROOK DAM, NEAR KEENE, NH	115	88	1.6	1.1	0.3	131%	FALSE	FALSE	FALSE
01160350	ASHUELOT RIVER AT WEST SWANZEY, NH	967	910	32 --	--		106%	FALSE	#VALUE!	#VALUE!

*Flow duration and record low mean daily flow significantly affected by reservoir operations

**Estimated

Source: USGS, NH DES

SUMMARY	Below 0.99 Flow?	Below 7Q10 Flow?	Below Record Flow?
FALSE =	31	32	17
TRUE =	0	0	0

New Hampshire Groundwater Levels for April 2009

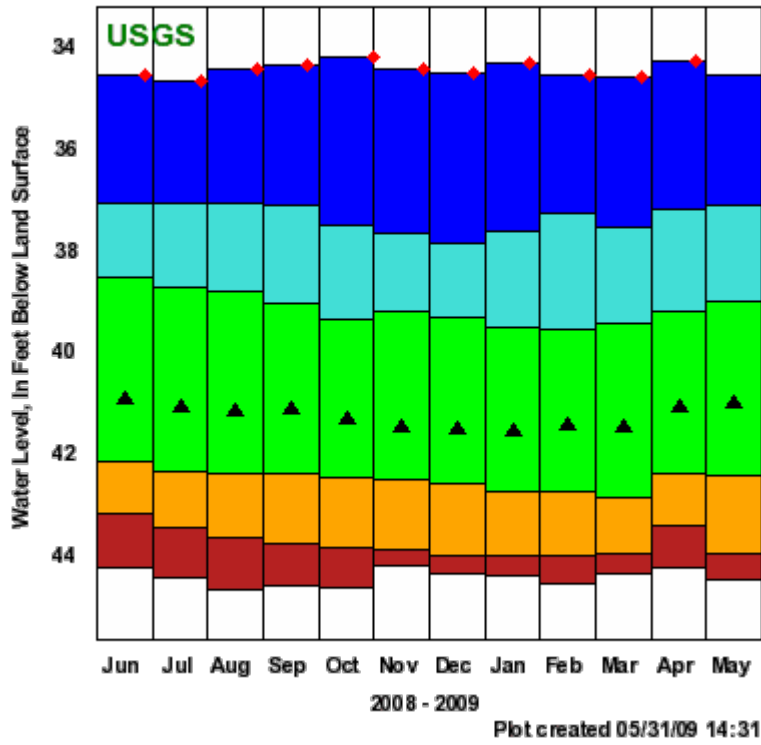


WELL	START OF WATER LEVEL BELOW		NET CHANGE		NET CHANGE		DEPARTURE FROM		PERCENT OF	STATUS
	RECORD	SURFACE DATUM (ft)	IN ONE MONTH (ft)	IN ONE YEAR (ft)	MEDIAN	RANGE (ft)	MONTHLY MEDIAN (FT)	RANGE		
ALBANY 14	1995	3.83	+2.32	-2.06	3.93	2.16	+0.10	4.6	NORMAL	
ALBANY 15	1995	5.03	+3.16	-2.77	4.97	2.69	-0.06	-2.2	NORMAL	
BARNSTEAD 10	1995	1.63	+0.53	-0.66	2.06	1.09	+0.43	39.4	ABOVE NORMAL	
CAMPTON 34	1988	10.96	+1.02	-1.05	10.93	1.44	-0.03	-2.1	NORMAL	
COLEBROOK 73	1995	7.00	+0.56	-0.87	6.85	0.68	-0.15	-22.1	NORMAL	
CONCORD 2	1963	34.28	+0.31	+0.81	41.33	6.24	+7.05	113.0	ABOVE NORMAL	
CONCORD 4	1966	15.06	+0.71	-0.48	16.13	2.20	+1.07	48.6	ABOVE NORMAL	
DEERFIELD 46	1984	37.27	+0.88	---	37.90	1.16	+0.63	54.3	ABOVE NORMAL	
ENFIELD 30	1990	1.98	+0.42	+35.23	2.01	0.69	+0.03	4.3	NORMAL	
ERROL 1	1966	14.0	-0.6	+0.1	11.8	3.3	-2.2	-66.7	BELOW NORMAL	
FRANKLIN 1	1966	8.57	+2.20	+2.27	10.81	3.83	+2.24	58.5	ABOVE NORMAL	
GREENFIELD 75	1995	58.73	+0.81	---	61.18	2.56	+2.45	95.7	ABOVE NORMAL	
HOOKSETT 5	1965	46.96	+0.28	+12.81	46.35	1.97	-0.61	-31.0	NORMAL	
KEENE 2	1963	3.09	-0.34	+42.18	2.81	0.93	-0.28	-30.1	NORMAL	
LANCASTER 1	1966	1.20	---	2.15	0.74	1.06	-0.46	-43.40	BELOW NORMAL	
LEE 1	1953	30.14	-0.55	-29.04	30.67	1.65	+0.53	32.1	ABOVE NORMAL	
LISBON 19	1990	12.31	-0.04	17.31	12.64	2.48	+0.33	13.3	NORMAL	
NASHUA 218	1964	26.55	-0.05	-14.10	27.24	2.27	+0.69	30.4	ABOVE NORMAL	
NEW DURHAM 53	1986	18.45	+0.04	---	18.53	0.80	+0.08	10.0	NORMAL	
NEW LONDON 1	1947	6.31	-2.06	+20.06	4.48	5.83	-1.83	-31.4	BELOW NORMAL	
NEWPORT 3	1995	5.11	-0.20	+13.17	4.23	1.47	-0.88	-59.9	mo	
NEWPORT 6	1995	5.18	-0.25	+0.60	4.30	1.51	-0.88	-58.3	NORMAL	
OSSIPEE 38	1995	33.61	+1.51	-29.33	34.28	1.23	+0.67	54.5	ABOVE NORMAL	
SHELBURNE 2	1995	4.16	+0.93	+0.16	3.58	1.16	-0.58	-50.0	BELOW NORMAL	
WARNER 1	1965	27.53	+1.42	+5.52	28.22	3.28	+0.69	21.0	ABOVE NORMAL	

Source: USGS, NH DES

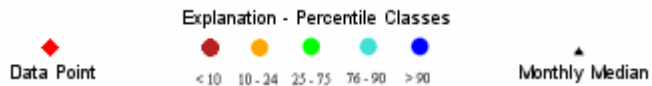
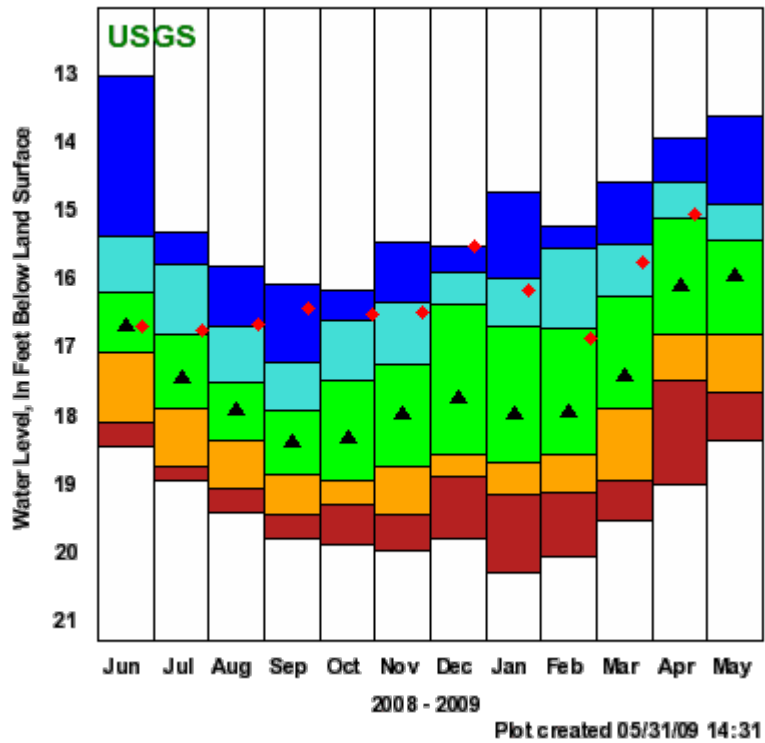
CONCORD 2

431224071303601 - NH-CVW 2



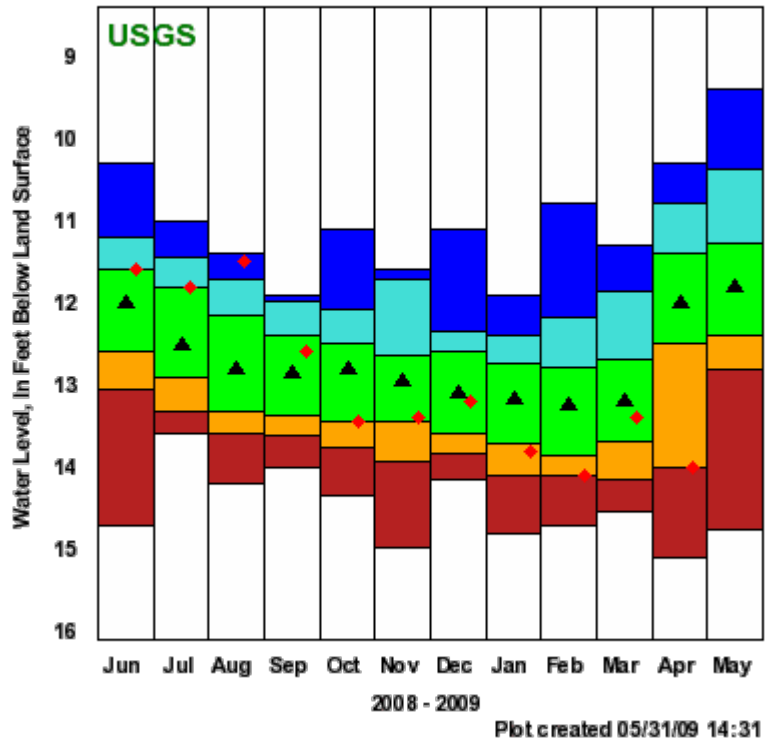
CONCORD 4

431049071324301 - NH-CVW 4



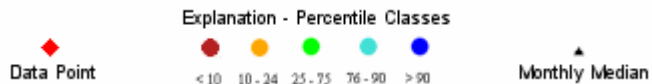
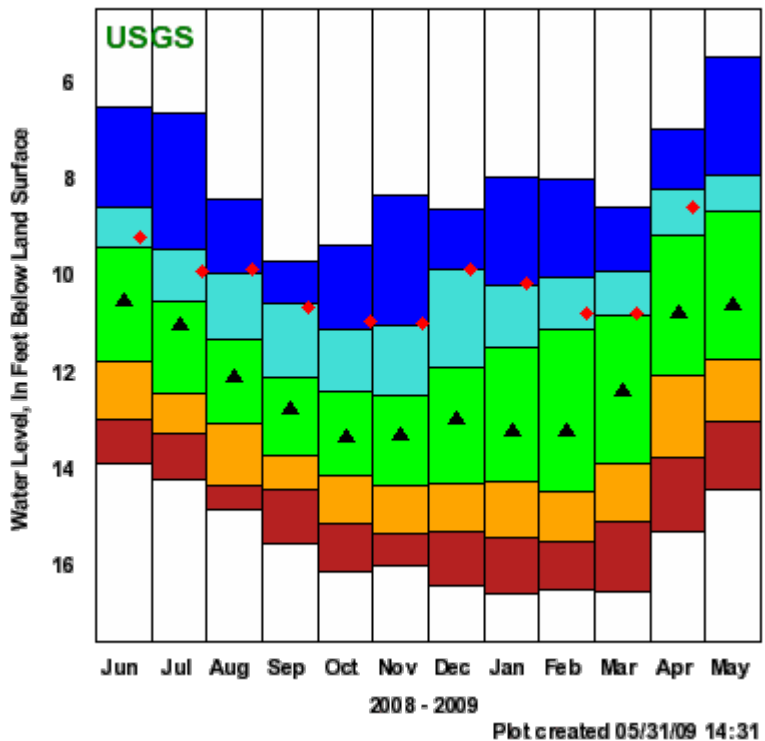
ERROL 1

444733071094901 - NH-ETW 1

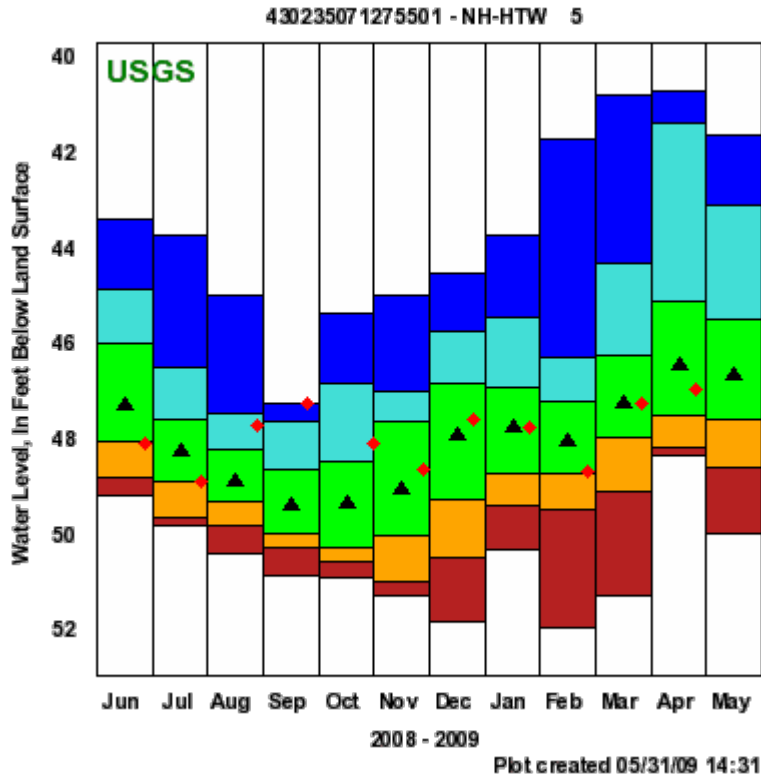


FRANKLIN 1

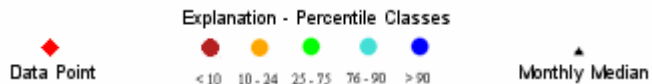
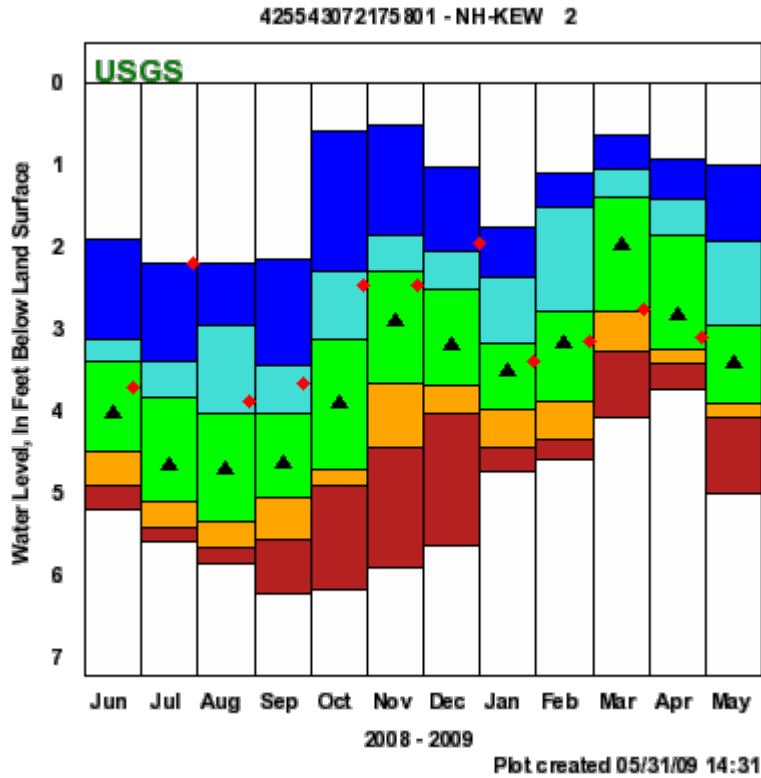
432428071390701 - NH-FKW 1



HOOKSETT 5

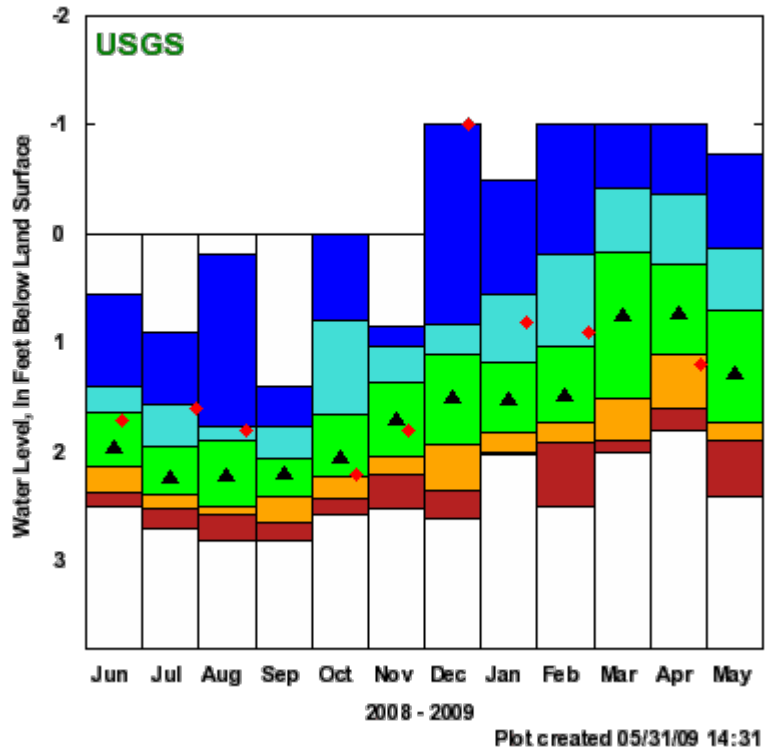


KEENE 2



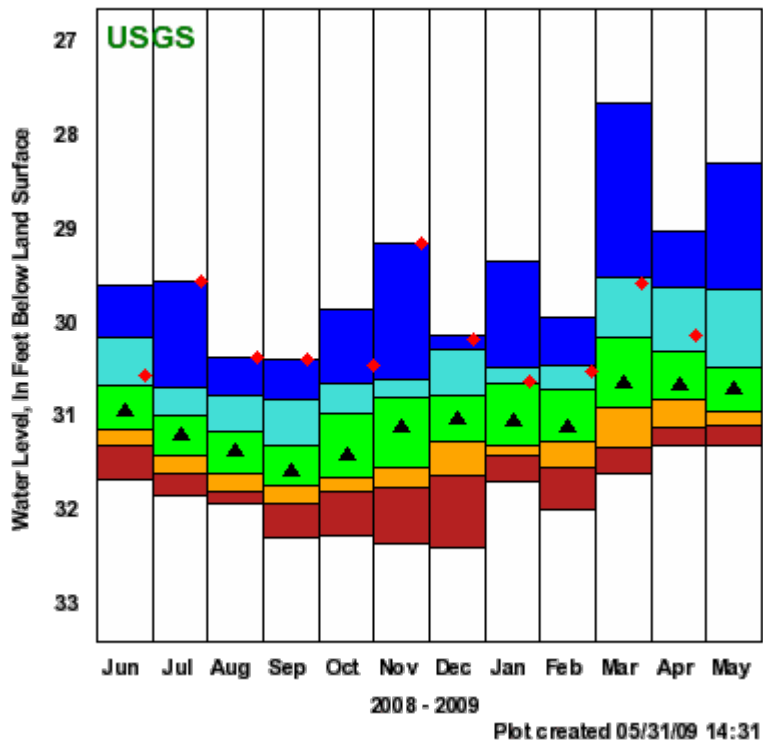
LANCASTER 1

442830071321001 - NH-LCW 1



LEE 1

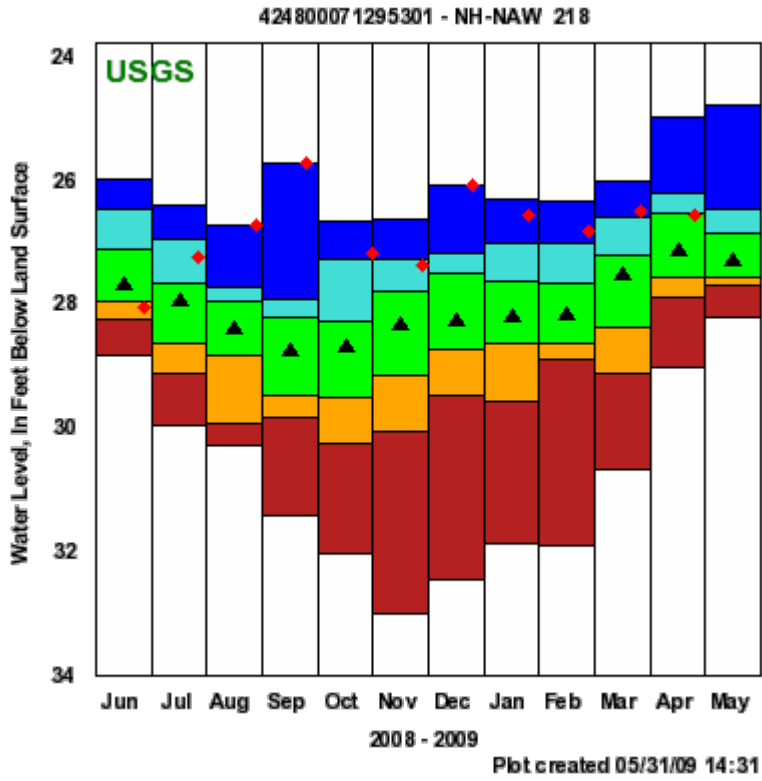
430721071005001 - NH-LIW 1



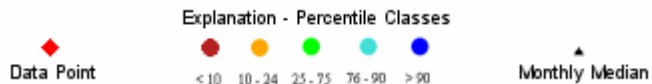
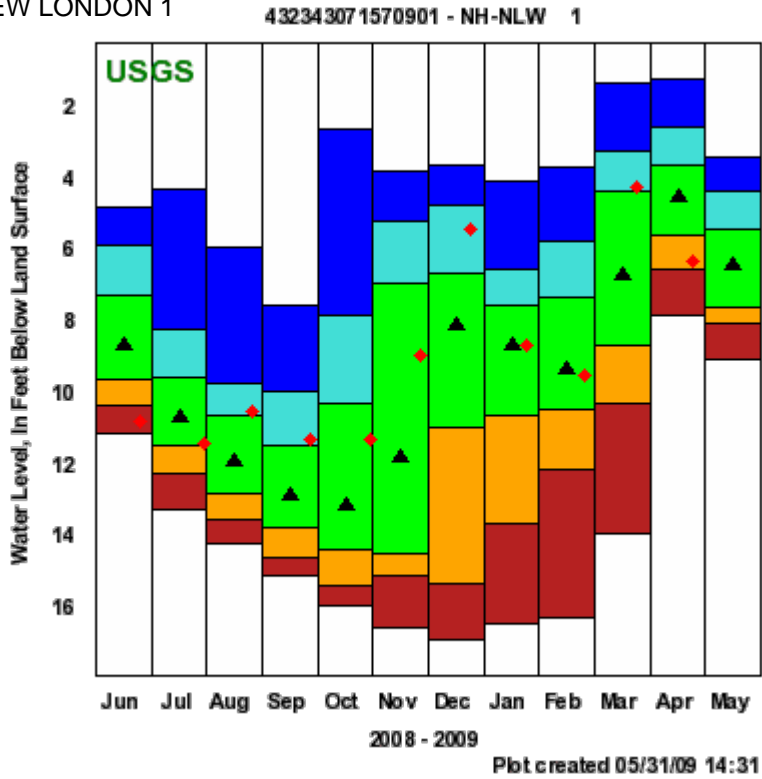
Explanation - Percentile Classes

◆ Data Point ● <10 ● 10-24 ● 25-75 ● 76-90 ● >90 ▲ Monthly Median

NASHUA 218

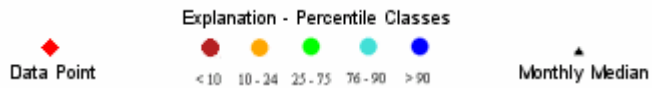
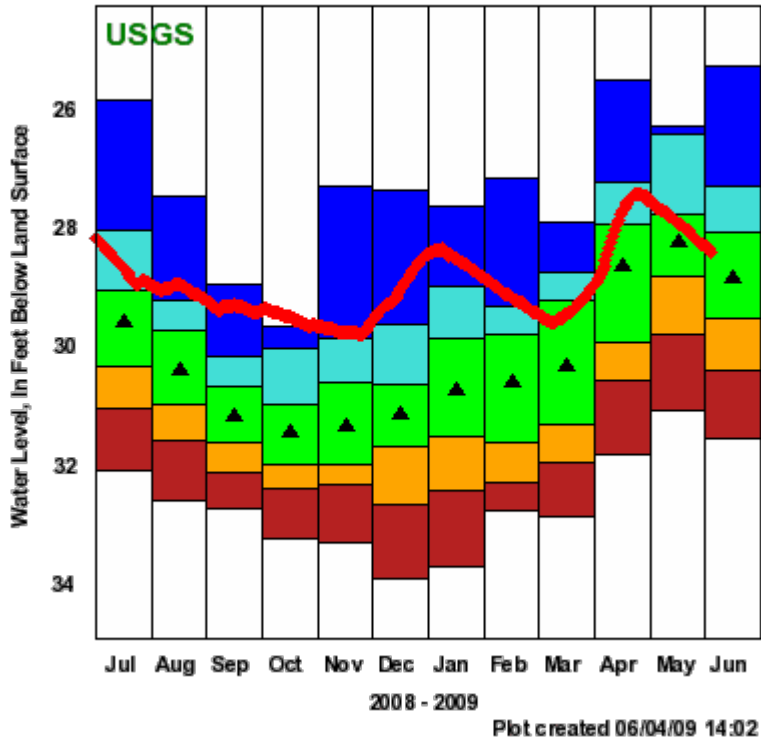


NEW LONDON 1

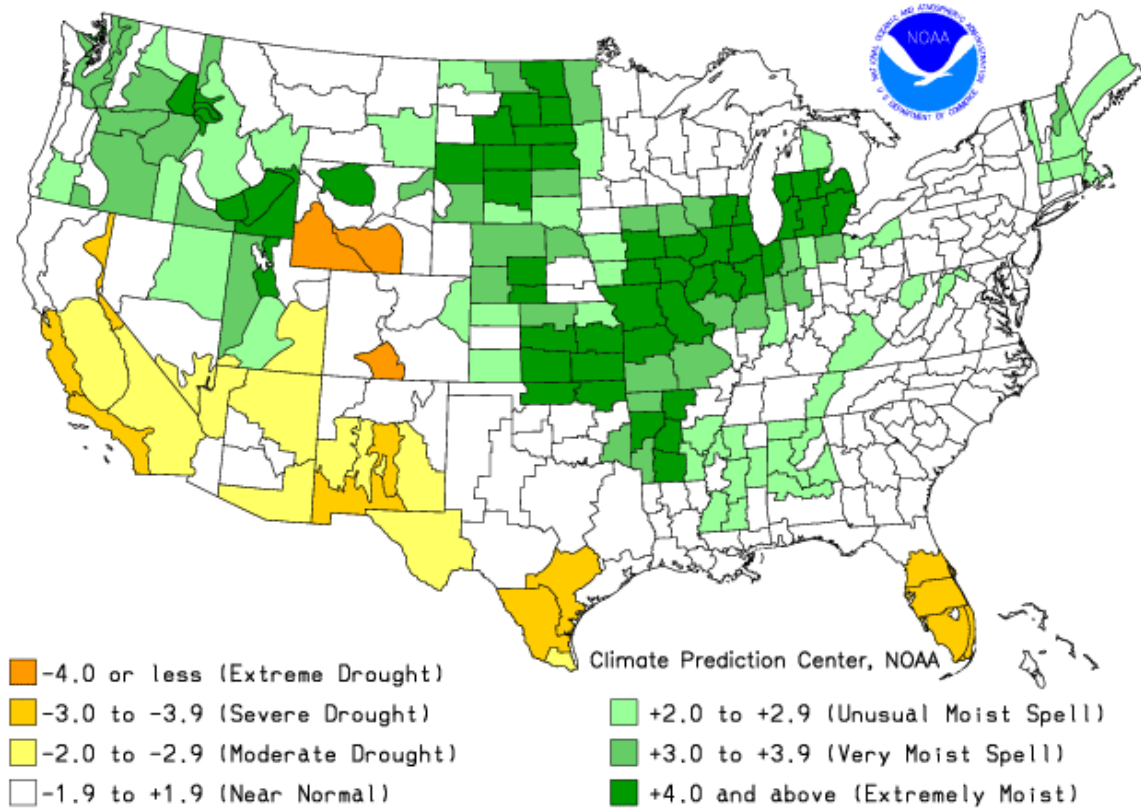


WARNER 1

431540071452801 - NH-WCW 1 Warner, NH



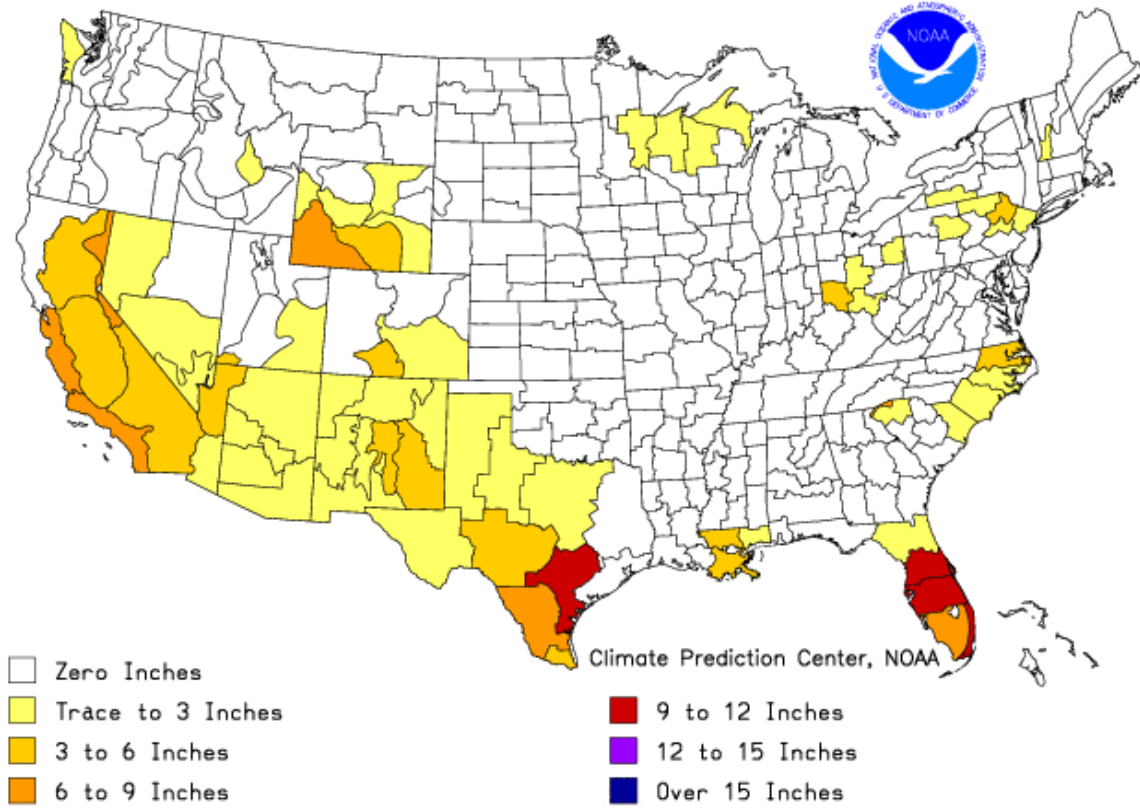
Drought Severity Index by Division
Weekly Value for Period Ending MAY 9, 2009
Long Term Palmer



THE PALMER DROUGHT SEVERITY INDEX

The Palmer Index uses temperature and rainfall information in a formula to determine dryness. The advantage of the Palmer Index is that it is standardized to local climate.

Additional Precip. Needed (In.) to Bring PDI to -0.5
Weekly Value for Period Ending MAY 9, 2009
Long Term Palmer Drought Severity Index (PDI)



This is the amount of rainfall required in a week's time to bring the index back to zero inches required.