



The State of New Hampshire  
**DEPARTMENT OF ENVIRONMENTAL SERVICES**



Thomas S. Burack, Commissioner

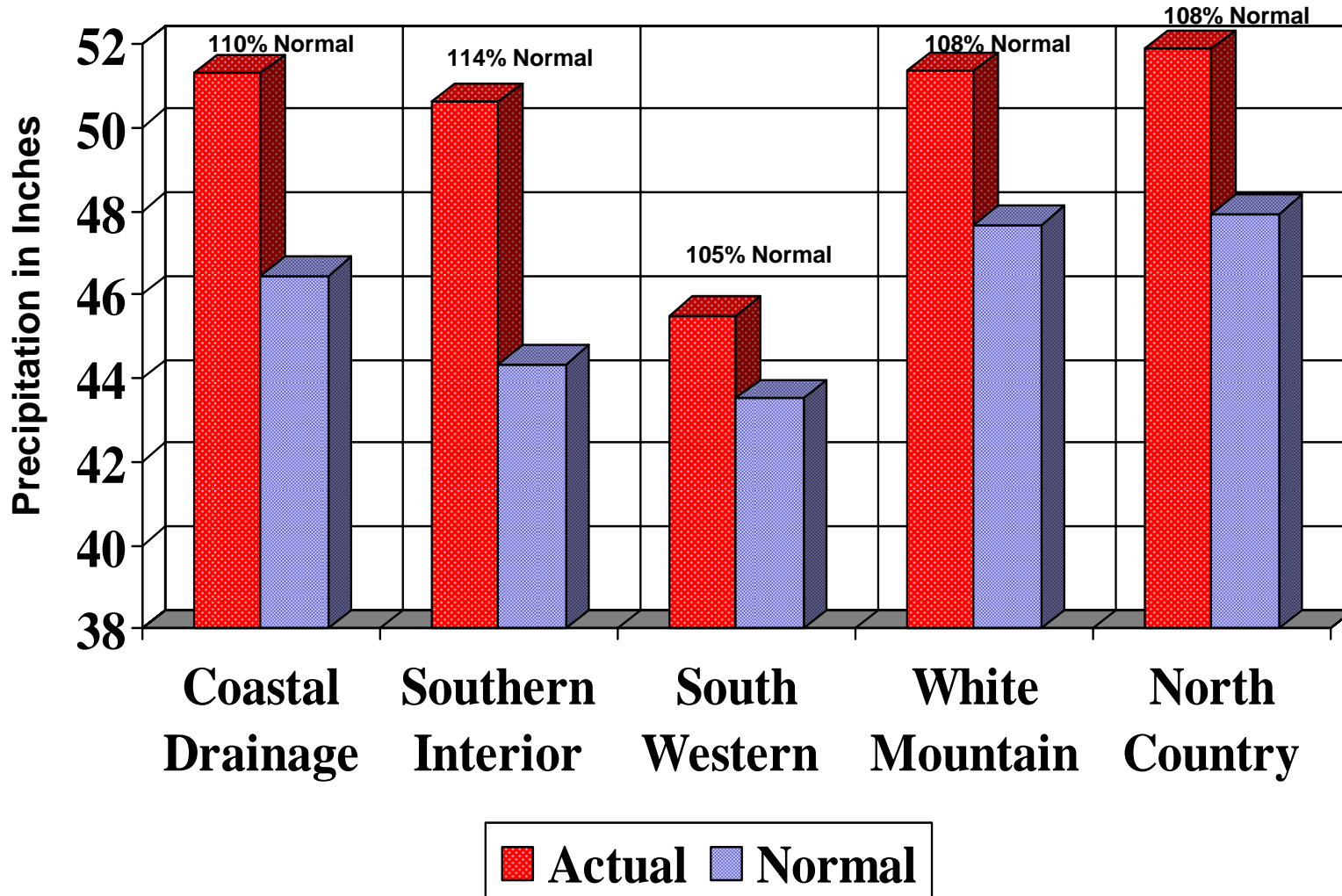
**AGGREGATED PRECIPITATION DATA for N.H.  
 DROUGHT MANAGEMENT AREAS**

	Actual Rainfall (inches)	Normal Rainfall (inches)	Deviation from Normal (inches)	Percent of Normal
<u>Coastal Drainage:</u> Rockingham, Strafford counties				
four month	16.59	15.71	0.89	106%
six month	21.63	22.58	-0.96	96%
nine month	33.12	35.40	-2.29	94%
twelve month	51.30	46.46	4.85	110%
<u>Southern Interior:</u> Belknap, Hillsborough, Merrimack counties				
four month	16.87	14.90	1.97	113%
six month	21.15	21.37	-0.22	99%
nine month	32.76	33.08	-0.32	99%
twelve month	50.61	44.34	6.27	114%
<u>South Western:</u> Cheshire, Sullivan counties				
four month	14.56	14.76	-0.21	99%
six month	18.25	20.96	-2.72	87%
nine month	30.01	31.93	-1.92	94%
twelve month	45.51	43.53	1.98	105%
<u>White Mountain:</u> Carroll, Grafton counties				
four month	16.10	15.99	0.11	101%
six month	20.35	22.73	-2.38	90%
nine month	33.27	35.10	-1.83	95%
twelve month	51.36	47.68	3.68	108%
<u>North Country:</u> Coos county				
four month	15.51	15.93	-0.42	97%
six month	20.55	22.33	-1.78	92%
nine month	34.73	34.45	0.28	101%
twelve month	51.87	47.93	3.94	108%

four month period : March 2009 - June 2009  
 six month period : January 2009 - June 2009  
 nine month period : October 2008 - June 2009  
 twelve month period: July 2008 - June 2009

Source: Northeast River Forecast Center, NH Des Dam Bureau

# TWELVE MONTH AGGREGATED PRECIPITATION DATA for N.H. DROUGHT MANAGEMENT AREAS from July 2008 through June 2009





## MONTHLY PRECIPITATION DATA FOR N.H. COUNTIES

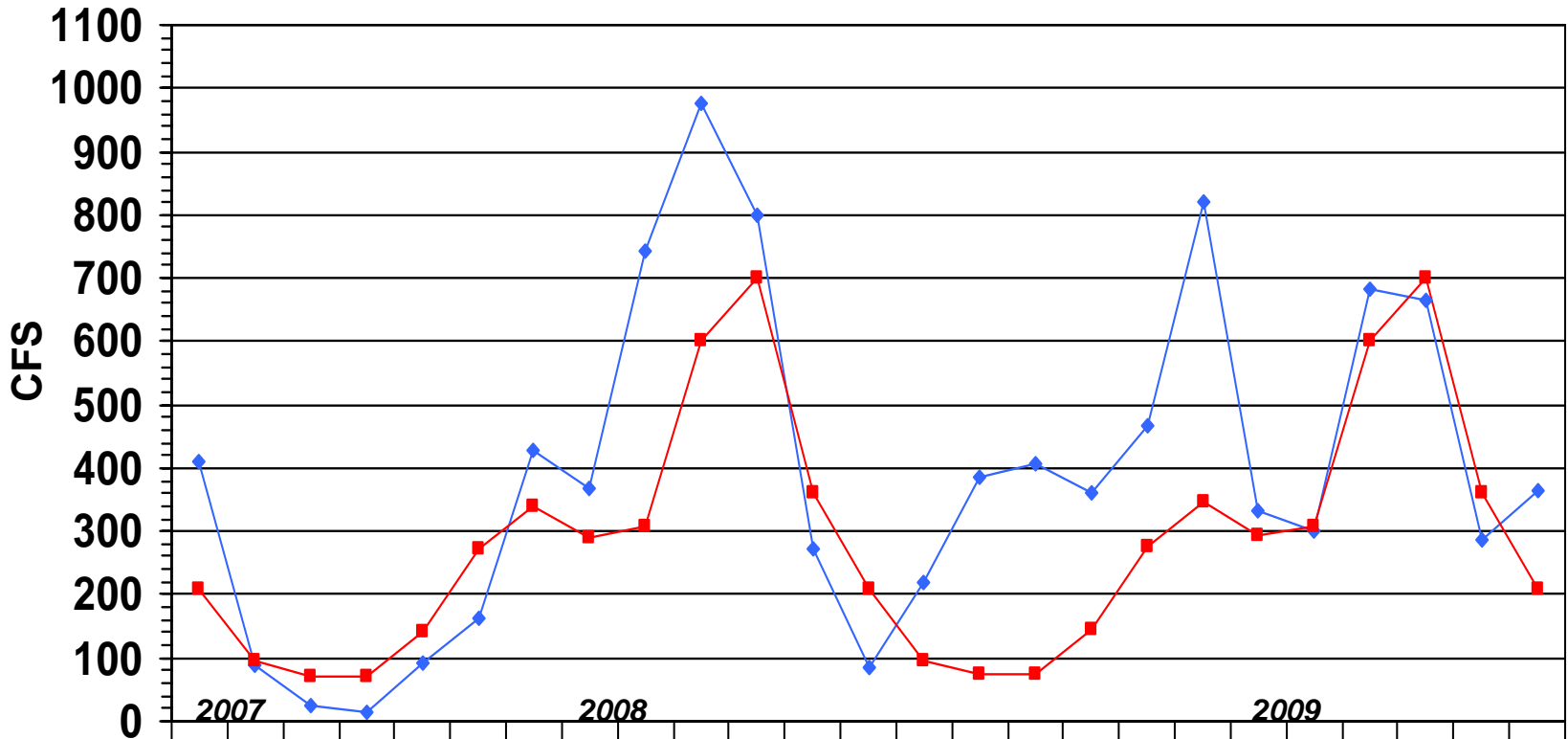
		2008						2009					
		JULY	AUG	SEPT	OCT	NOV	DEC	JAN	FEB	MARCH	APRIL	MAY	JUNE
<u>Coastal drainage</u>													
STRAFFORD	actual	5.11	3.58	8.00	2.54	4.62	3.76	2.33	2.39	2.71	3.94	3.52	5.66
	normal	3.75	3.69	3.77	4.39	4.71	3.99	3.68	3.21	4.02	4.39	3.88	3.77
	deviation	1.36	-0.11	4.23	-1.85	-0.09	-0.23	-1.35	-0.82	-1.31	-0.45	-0.36	1.89
ROCKINGHAM	actual	6.47	4.18	9.03	2.70	4.55	4.81	3.05	2.30	2.93	4.06	3.81	6.55
	normal	3.59	3.55	3.76	4.20	4.42	3.93	3.77	3.09	3.86	4.12	3.69	3.68
	deviation	2.88	0.63	5.27	-1.50	0.13	0.88	-0.72	-0.79	-0.93	-0.06	0.12	2.87
Average	actual	5.79	3.88	8.52	2.62	4.59	4.29	2.69	2.35	2.82	4.00	3.67	6.11
	normal	3.67	3.62	3.77	4.30	4.57	3.96	3.73	3.15	3.94	4.26	3.79	3.73
	deviation	2.12	0.26	4.75	-1.68	0.02	0.33	-1.04	-0.81	-1.12	-0.26	-0.12	2.38
<u>Southern Interior</u>													
HILLSBOROUGH	actual	6.21	3.90	7.94	2.60	4.28	5.36	2.77	1.72	2.95	3.65	4.16	7.10
	normal	3.75	3.78	3.67	4.16	4.18	3.84	3.80	3.07	3.88	3.89	3.81	3.75
	deviation	2.46	0.12	4.27	-1.56	0.10	1.52	-1.03	-1.35	-0.93	-0.24	0.35	3.35
MERRIMACK	actual	5.38	4.74	8.42	3.08	4.61	4.71	2.72	2.08	3.20	3.64	4.01	6.73
	normal	3.81	3.78	3.52	3.97	3.97	3.56	3.49	2.79	3.51	3.66	3.84	3.66
	deviation	1.57	0.96	4.90	-0.89	0.64	1.15	-0.77	-0.71	-0.31	-0.02	0.17	3.07
BELKNAP	actual	4.55	5.35	7.04	2.70	4.24	3.25	1.57	2.00	2.51	3.29	3.23	6.13
	normal	4.08	3.84	3.55	4.00	3.94	3.50	3.52	2.76	3.42	3.66	3.82	3.79
	deviation	0.47	1.51	3.49	-1.30	0.30	-0.25	-1.95	-0.76	-0.91	-0.37	-0.59	2.34
Average	actual	5.38	4.66	7.80	2.79	4.38	4.44	2.35	1.93	2.89	3.53	3.80	6.65
	normal	3.88	3.80	3.58	4.04	4.03	3.63	3.60	2.87	3.60	3.74	3.82	3.73
	deviation	1.50	0.86	4.22	-1.25	0.35	0.81	-1.25	-0.94	-0.72	-0.21	-0.02	2.92
<u>South Western</u>													
CHESHIRE	actual	5.93	3.47	6.13	3.04	3.15	4.87	2.16	1.21	2.67	2.89	3.86	5.28
	normal	4.03	4.05	3.57	3.82	3.80	3.51	3.64	2.82	3.60	3.64	3.97	3.81
	deviation	1.90	-0.58	2.56	-0.78	-0.65	1.36	-1.48	-1.61	-0.93	-0.75	-0.11	1.47
SULLIVAN	actual	5.37	4.33	5.78	3.95	3.27	5.24	2.50	1.51	2.55	2.77	3.90	5.19
	normal	4.00	3.93	3.63	3.87	3.67	3.26	3.27	2.67	3.33	3.52	3.90	3.75
	deviation	1.37	0.40	2.15	0.08	-0.40	1.98	-0.77	-1.16	-0.78	-0.75	0.00	1.44
Average	actual	5.65	3.90	5.96	3.50	3.21	5.06	2.33	1.36	2.61	2.83	3.88	5.24
	normal	4.02	3.99	3.60	3.85	3.74	3.39	3.46	2.75	3.47	3.58	3.94	3.78
	deviation	1.64	-0.09	2.36	-0.35	-0.53	1.67	-1.13	-1.39	-0.86	-0.75	-0.06	1.46
<u>White Mountain</u>													
GRAFTON	actual	7.42	6.18	4.63	4.12	3.49	4.66	1.84	1.88	2.27	3.20	4.88	4.71
	normal	4.34	4.43	4.05	4.19	4.21	3.66	3.64	2.79	3.60	3.72	4.01	4.26
	deviation	3.08	1.75	0.58	-0.07	-0.72	1.00	-1.80	-0.91	-1.33	-0.52	0.87	0.45
CARROLL	actual	5.90	5.54	6.51	2.96	5.62	4.99	2.20	2.59	2.45	3.64	4.15	6.89
	normal	4.25	4.21	3.88	4.38	4.33	3.97	4.01	3.05	4.00	4.05	4.19	4.14
	deviation	1.65	1.33	2.63	-1.42	1.29	1.02	-1.81	-0.46	-1.55	-0.41	-0.04	2.75
Average	actual	6.66	5.86	5.57	3.54	4.56	4.83	2.02	2.24	2.36	3.42	4.52	5.80
	normal	4.30	4.32	3.97	4.29	4.27	3.82	3.83	2.92	3.80	3.89	4.10	4.20
	deviation	2.37	1.54	1.61	-0.75	0.29	1.01	-1.81	-0.69	-1.44	-0.47	0.42	1.60
<u>North Country</u>													
COOS	actual	7.68	5.62	3.84	4.15	4.84	5.19	2.16	2.88	1.95	2.94	5.22	5.40
	normal	4.53	4.70	4.25	4.13	4.24	3.75	3.61	2.79	3.57	3.61	4.14	4.61
	deviation	3.15	0.92	-0.41	0.02	0.60	1.44	-1.45	0.09	-1.62	-0.67	1.08	0.79

# LAMPREY RIVER near NEWMARKET NH

## Gage# 01073500



### MONTHLY MEAN FLOW COMPARED TO MEAN OF MONTHLY FLOWS



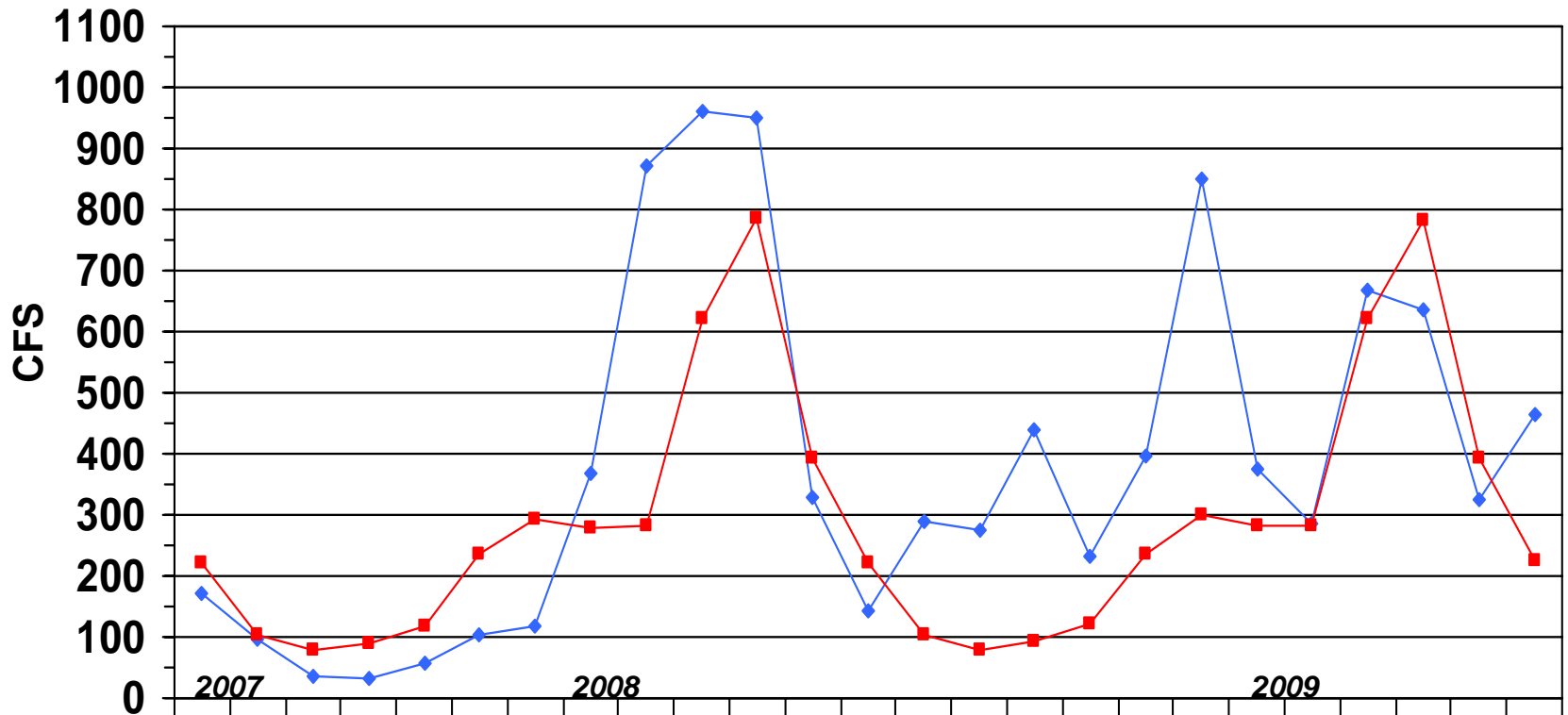
	2007			2008												2009									
	June	July	Aug	Sep	Oct	Nov	Dec	Jan	Feb	Mar	April	May	June	July	Aug	Sep	Oct	Nov	Dec	Jan	Feb	Mar	Apr	May	June
◆ Monthly Mean Flow	409	89	24	13	91	164	427	367	743	977	798	272	85	218	387	406	361	466	822	332	301	681	664	286	363
■ Mean of Monthly Flow s	209	95	70	69	142	272	340	291	307	601	701	362	207	96	75	74	145	275	346	292	307	602	700	361	210
% of Normal	195%	93%	34%	19%	64%	60%	126%	126%	242%	162%	114%	75%	41%	227%	516%	549%	249%	169%	237%	114%	98%	113%	95%	79%	173%

# SOUHEGAN RIVER at MERRIMACK NH

## Gage# 01094000



### MONTHLY MEAN FLOW COMPARED TO MEAN OF MONTHLY FLOWS

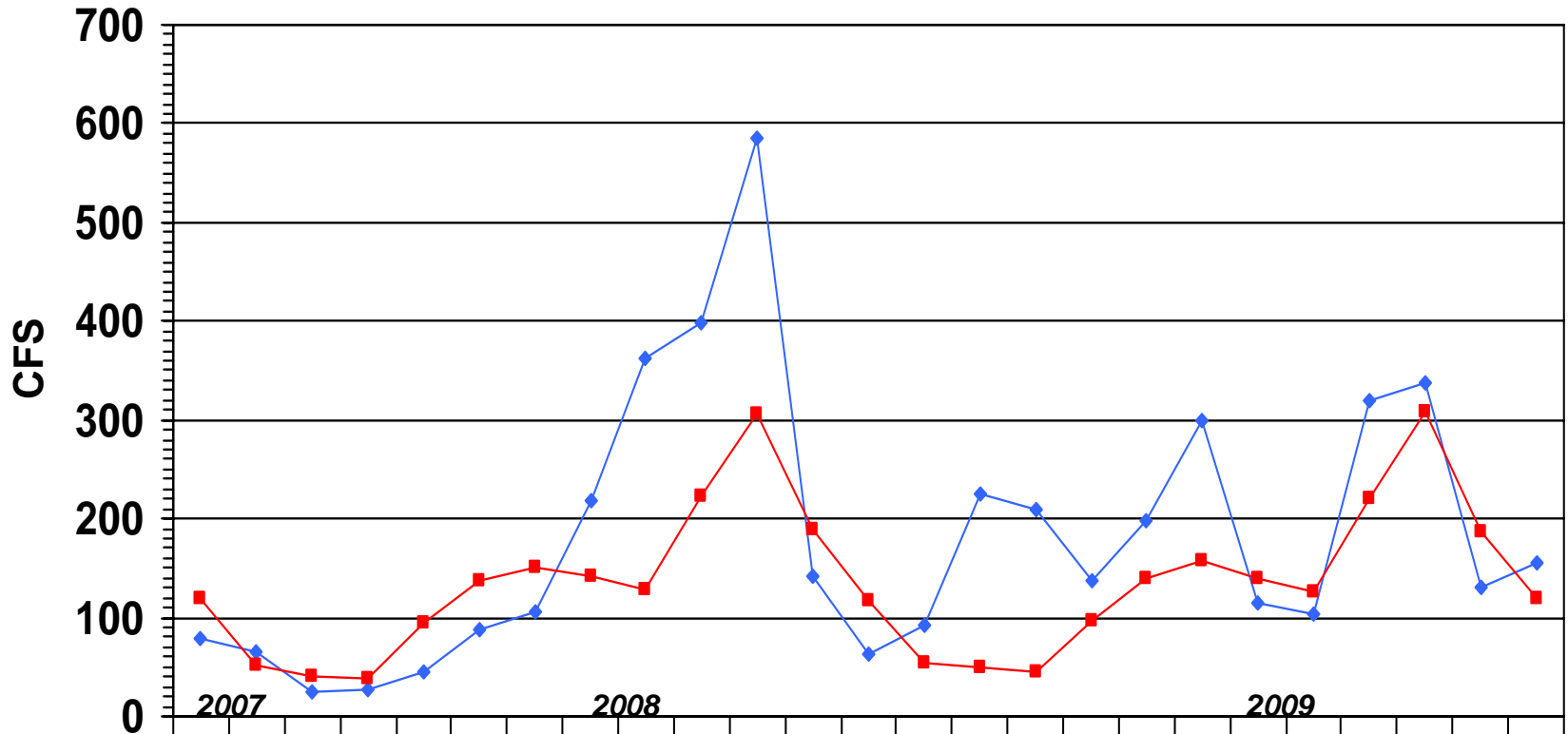


	2007			2008									2009												
	June	July	Aug	Sep	Oct	Nov	Dec	Jan	Feb	Mar	April	May	June	July	Aug	Sep	Oct	Nov	Dec	Jan	Feb	Mar	Apr	May	June
◆ Monthly Mean Flow	171	98	34	33	58	105	118	369	873	961	950	328	144	288	275	441	233	398	850	374	284	669	636	324	466
■ Mean of Monthly Flow s	223	103	77	88	119	234	294	280	281	620	784	394	222	105	80	92	121	236	301	281	281	620	782	393	225
% of Normal	77%	95%	44%	38%	48%	45%	40%	132%	311%	155%	121%	83%	65%	274%	344%	479%	192%	169%	282%	133%	101%	108%	81%	82%	207%

# SOUCOOK RIVER at PEMBROKE ROAD near CONCORD NH, Gage# 01089100



## MONTHLY MEAN FLOW COMPARED TO MEAN OF MONTHLY FLOWS



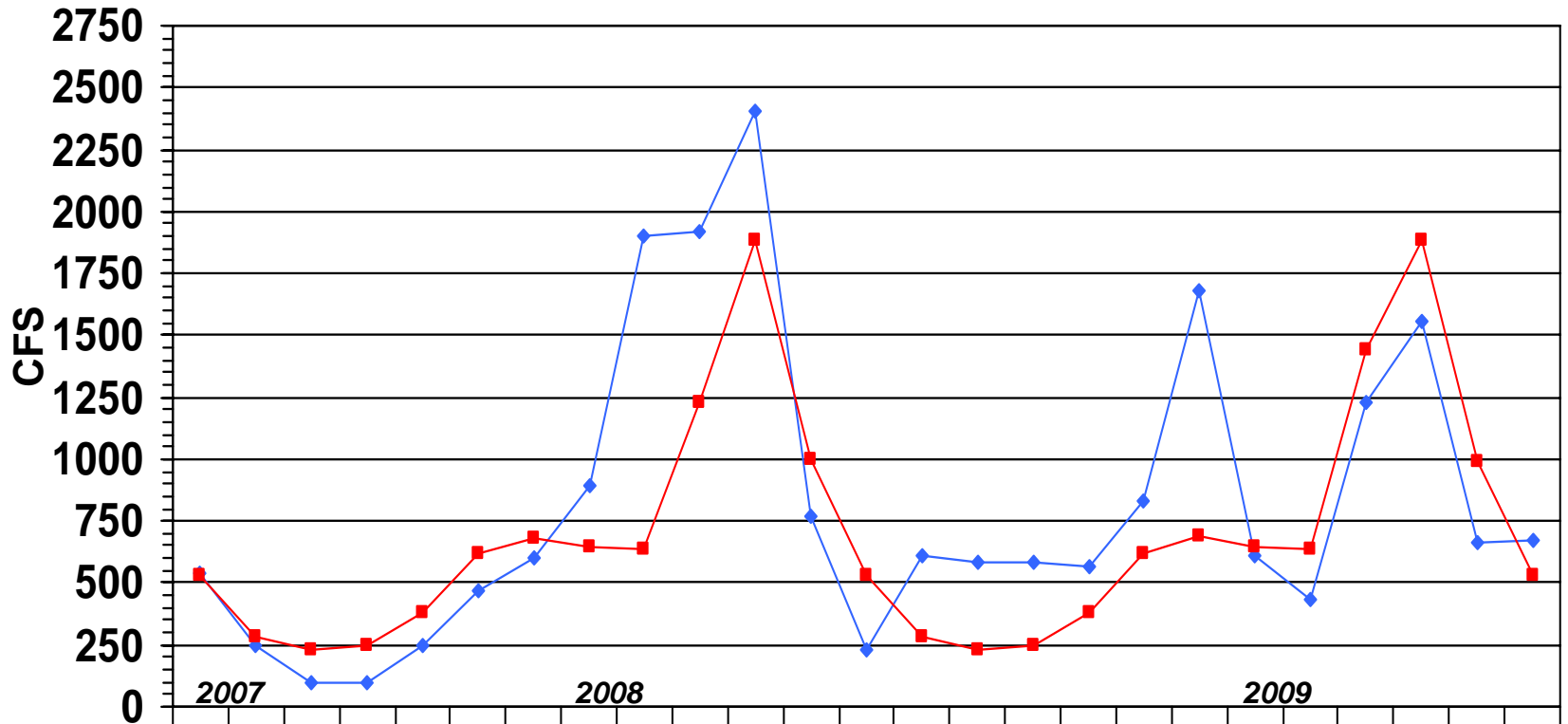
	2007			2008												2009									
	June	July	Aug	Sep	Oct	Nov	Dec	Jan	Feb	Mar	April	May	June	July	Aug	Sep	Oct	Nov	Dec	Jan	Feb	Mar	Apr	May	June
◆ Monthly Mean Flow	78	66	25	26	45	87	105	219	363	398	586	142	64	92	226	210	138	198	300	114	104	320	338	131	156
■ Mean of Monthly Flow s	119	51	40	38	94	137	150	141	128	222	307	189	117	53	49	46	96	140	157	139	127	220	309	187	119
% of Normal	66%	129%	62%	68%	48%	64%	70%	155%	284%	179%	191%	75%	54%	174%	461%	456%	144%	141%	191%	82%	82%	145%	109%	70%	134%

# ASHUELOT RIVER at HINSDALE NH

## Gage# 01161000



### MONTHLY MEAN FLOW COMPARED TO MEAN OF MONTHLY FLOWS



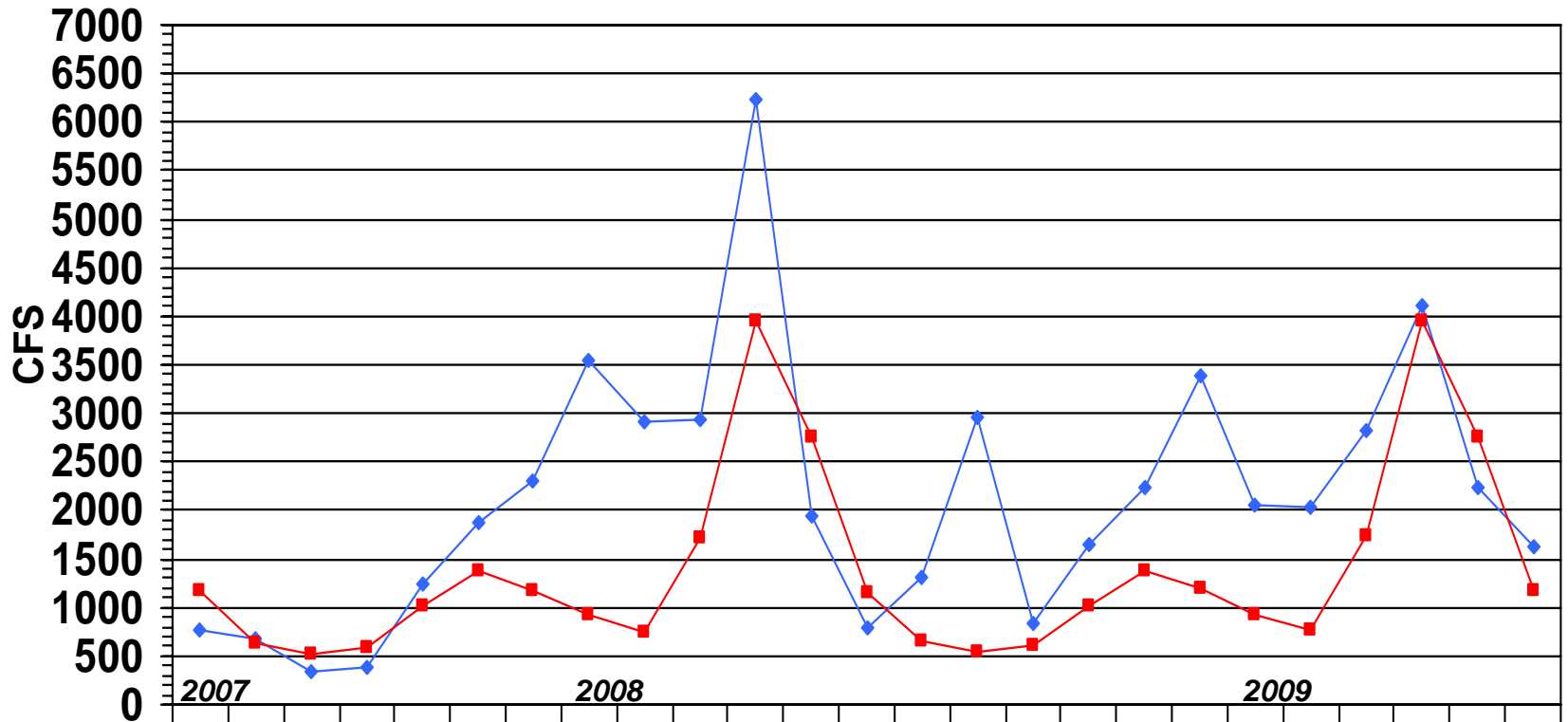
	2007			2008									2009												
	June	July	Aug	Sep	Oct	Nov	Dec	Jan	Feb	Mar	April	May	June	July	Aug	Sep	Oct	Nov	Dec	Jan	Feb	Mar	Apr	May	June
◆ Monthly Mean Flow	536	252	96	99	244	471	604	894	1900	1918	2407	765	226	608	585	582	568	829	1676	611	429	1233	1560	664	671
■ Mean of Monthly Flow s	534	282	229	245	381	619	684	648	639	1231	1886	995	530	286	232	249	383	621	694	648	637	1444	1883	992	532
% of Normal	100%	89%	42%	40%	62%	76%	88%	138%	297%	156%	128%	77%	43%	213%	252%	234%	148%	133%	241%	94%	67%	117%	83%	67%	126%

# PEMIGEWASSET RIVER at PLYMOUTH NH

## Gage# 01076500



### MONTHLY MEAN FLOW COMPARED TO MEAN OF MONTHLY FLOWS



	2007			2008												2009									
	June	July	Aug	Sep	Oct	Nov	Dec	Jan	Feb	Mar	April	May	June	July	Aug	Sep	Oct	Nov	Dec	Jan	Feb	Mar	Apr	May	June
◆ Monthly Mean Flow	773	687	340	381	1251	1871	2298	3542	2909	2927	6221	1938	782	1304	2957	843	1642	2245	3378	2057	2022	2827	4115	2225	1624
■ Mean of Monthly Flow s	1163	643	512	598	1019	1377	1181	917	751	1720	3945	2755	1159	649	535	600	1025	1385	1202	928	763	1730	3946	2750	1164
% of Normal	66%	107%	66%	64%	123%	136%	195%	386%	387%	170%	158%	70%	67%	201%	553%	140%	160%	162%	281%	222%	265%	163%	104%	81%	139%

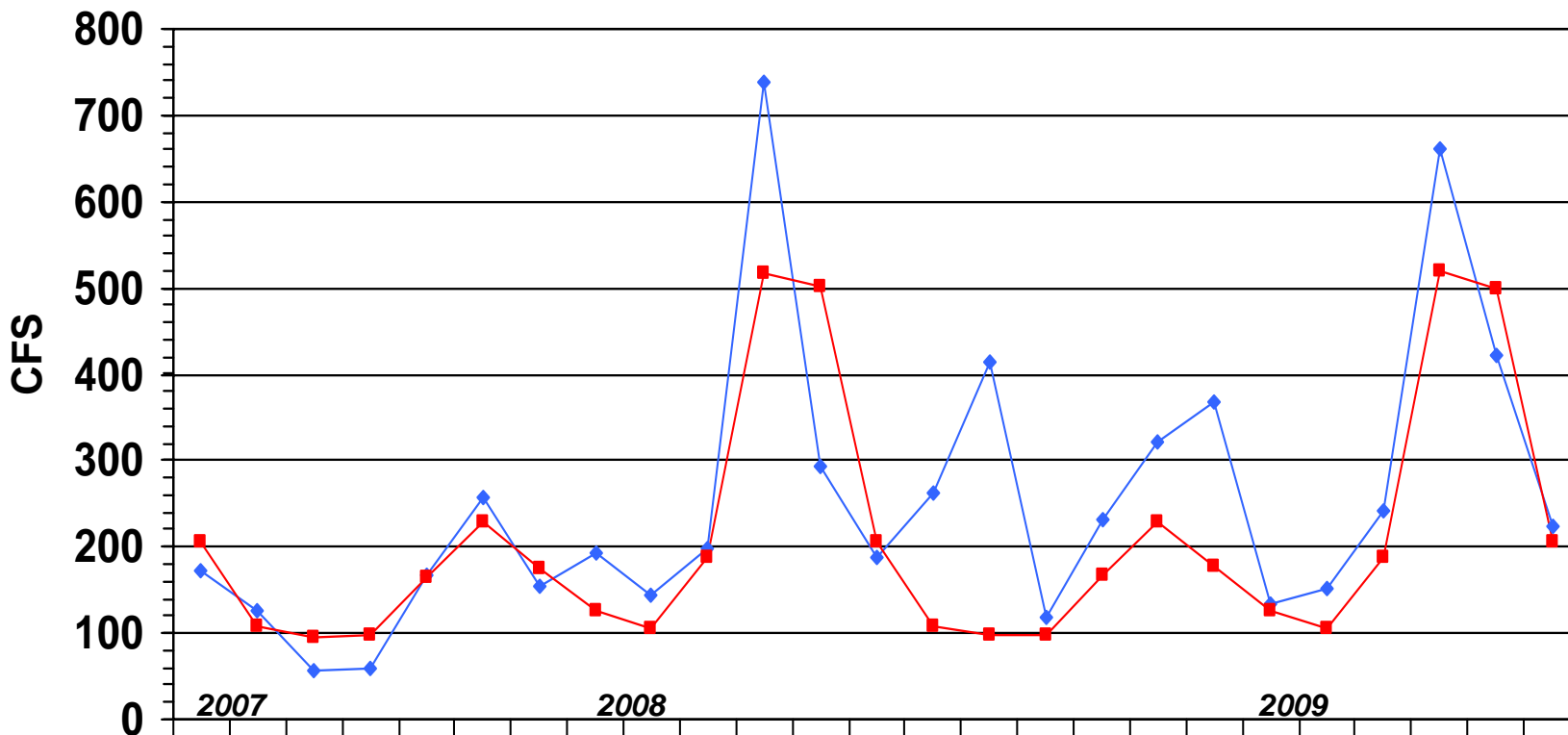
# AMMONOOSUC RIVER at BETHLEHEM JUNCTION NH

## Gage# 01137500



### MONTHLY MEAN FLOW COMPARED TO MEAN OF MONTHLY FLOWS

This station replaces gage# 01137000 which was discontinued by DES at the end of Sept 2004



	2007			2008						2009															
	June	July	Aug	Sep	Oct	Nov	Dec	Jan	Feb	Mar	April	May	June	July	Aug	Sep	Oct	Nov	Dec	Jan	Feb	Mar	Apr	May	June
◆ Monthly Mean Flow	173	125	56	60	166	258	155	192	143	197	738	294	189	263	415	119	232	321	368	134	151	241	660	422	225
■ Mean of Monthly Flows	207	107	94	99	165	228	175	125	106	187	518	501	206	109	98	99	166	229	178	126	106	188	520	500	207
% of Normal	84%	117%	59%	61%	101%	113%	89%	154%	135%	105%	142%	59%	92%	241%	423%	120%	140%	140%	207%	106%	142%	128%	127%	84%	109%

# STREAMFLOW DATA FOR SELECTED NH STATIONS AS OF JULY 7, 2009



Station number	Station name	Est. Mean Flow (cfs)	Long Term Median Flow	99% Flow (cfs)	7Q10 Flow (cfs)	Lowest Period of Record Daily Flow (cfs)	% of Median	Below 0.99 Flow?	Below 7Q10 Flow?	Below Record Flow?
<b>Androscoggin River Basin</b>										
01052500	Diamond River near Wentworth Location, NH	809	123	22	16	6.8	658%	FALSE	FALSE	FALSE
01053500	Androscoggin River at Errol, NH	7,690	1,700	500	451	0	452%	FALSE	FALSE	FALSE
01054000	Androscoggin River near Gorham, NH	8,340	1,930	1300	1310	795	432%	FALSE	FALSE	FALSE
<b>Saco River Basin</b>										
01064500	Saco River near Conway, NH	2,020	369	105	97	66	547%	FALSE	FALSE	FALSE
01064801	BEARCAMP RIVER AT SOUTH TAMWORTH, NH	206	23	6	4.8	4.5	896%	FALSE	FALSE	FALSE
<b>Piscataqua River Basin</b>										
01072800	COCHECO RIVER NEAR ROCHESTER, NH	162	28 --	--		2.2	579%	#VALUE!	#VALUE!	FALSE
01073500	LAMPREY RIVER NEAR NEWMARKET, NH	506	56	7	5 --		904%	FALSE	FALSE	#VALUE!
<b>Merrimack River Basin</b>										
01074520	EAST BRANCH PEMIGEWASSET RIVER AT LINCOLN, NH	532	122		49	46	436%	FALSE	FALSE	FALSE
01075000	PEMIGEWASSET RIVER AT WOODSTOCK, NH	827	222		56 --		373%	FALSE	FALSE	
01076000	BAKER RIVER NEAR RUMNEY, NH	346	73		15 --		474%	FALSE	FALSE	
01076500	PEMIGEWASSET RIVER AT PLYMOUTH, NH	1,960	476		118	45	412%	FALSE	FALSE	FALSE
01078000	SMITH RIVER NEAR BRISTOL, NH	213	32		6.2	2.7	666%	FALSE	FALSE	FALSE
01081000	WINNIPESAUKEE RIVER AT TILTON, NH	1,980	332		136	48	596%	FALSE	FALSE	FALSE
01081500	MERRIMACK RIVER AT FRANKLIN JUNCTION, NH	6,430	1,340		551 --		480%		FALSE	
01082000	CONTOOCOOK RIVER AT PETERBOROUGH, NH	152	27		6.3 --		563%	FALSE	FALSE	
01085000	CONTOOCOOK RIVER NEAR HENNIKER, NH	1,150 ---			37 --			FALSE	FALSE	
01085500	CONTOOCOOK R BL HOPKINTON DAM AT W HOPKINTON, NH	1,310	174		39 --		753%	FALSE	FALSE	
01086000	WARNER RIVER AT DAVISVILLE, NH	366	42		5.3 --		871%	FALSE	FALSE	
01087000	BLACKWATER RIVER NEAR WEBSTER, NH	540 ---			13.7 --			FALSE	FALSE	
01090800	PISCATAQUOG RIVER BL EVERETT DAM, NR E WEARE, NH	159 ---			1.2 --			FALSE	FALSE	
01091500	PISCATAQUOG RIVER NEAR GOFFSTOWN, NH	649 ---			8.8 --			FALSE	FALSE	
01092000	MERRIMACK R NR GOFFS FALLS, BELOW MANCHESTER, NH	2,000	2,000		644	98*	100%		FALSE	
01094000	SOUHEGAN RIVER AT MERRIMACK, NH	599	62		12.9 --		966%	FALSE	FALSE	
<b>Connecticut River Basin</b>										
01129200	CONNECTICUT R BELOW INDIAN STREAM NR PITTSBURG, NH	1,070	334		42	30	320%	FALSE	FALSE	FALSE
01129500	CONNECTICUT RIVER AT NORTH STRATFORD, NH	3,650	755		176	108	483%	FALSE	FALSE	FALSE
01131500	CONNECTICUT RIVER NEAR DALTON, NH	8,020	1,390		389	115	577%	FALSE	FALSE	FALSE
01137500	AMMONOOSUC RIVER AT BETHLEHEM JUNCTION, NH	481	91		28	21	529%	FALSE	FALSE	FALSE
01138500	CONNECTICUT RIVER AT WELLS RIVER, VT	2,100	2,490		690	152*	84%		FALSE	
01144500	CONNECTICUT RIVER AT WEST LEBANON, NH	5,500	3,370	380*	902	82*	163%		FALSE	
01152500	SUGAR RIVER AT WEST CLAREMONT, NH	528	120	40	38	14	440%	FALSE	FALSE	FALSE
01154500	CONNECTICUT RIVER AT NORTH WALPOLE, NH	2,400	4,360	260*	1058	115*	55%		FALSE	
01158000	ASHUELOT RIVER BELOW SURRY MT DAM, NEAR KEENE, NH	256	36	4.5	2.7	0.4	711%	FALSE	FALSE	FALSE
01158600	OTTER BROOK BELOW OTTER BROOK DAM, NEAR KEENE, NH	79	14	1.6	1.1	0.3	564%	FALSE	FALSE	FALSE
01160350	ASHUELOT RIVER AT WEST SWANZEY, NH	543	150	32 --	--		362%	FALSE		

\*Flow duration and record low mean daily flow significantly affected by reservoir operations

\*\*Estimated

Source: USGS, NH DES

SUMMARY	Below 0.99 Flow?	Below 7Q10 Flow?	Below Record Flow?
FALSE =	28	32	17
TRUE =	0	0	0

# New Hampshire Groundwater Levels for June 2009

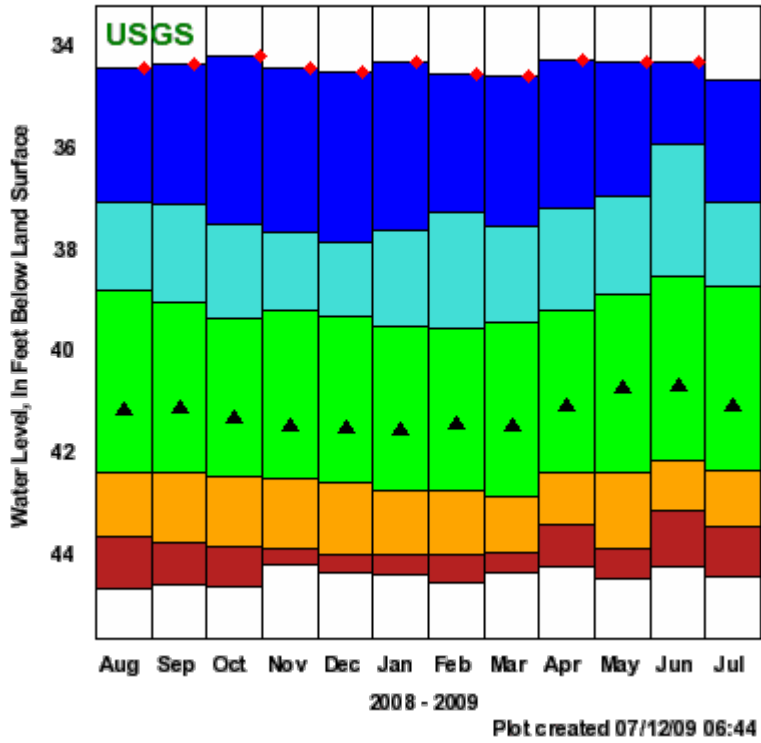


WELL	START OF WATER LEVEL BELOW		NET CHANGE		NET CHANGE		DEPARTURE FROM		PERCENT OF	STATUS
	RECORD	SURFACE DATUM (ft)	IN ONE MONTH (ft)	IN ONE YEAR (ft)	MEDIAN	RANGE (ft)	MONTHLY MEDIAN (FT)	RANGE		
ALBANY 14	1995	5.44	+0.30	+1.05	6.23	2.75	+0.79	28.7	ABOVE NORMAL	
ALBANY 15	1995	7.29	+0.40	+1.17	8.24	4.52	+0.95	21.0	ABOVE NORMAL	
BARNSTEAD 10	1995	2.29	+0.30	+0.09	2.90	0.63	+0.61	96.8	ABOVE NORMAL	
CAMPTON 34	1988	11.82	+0.09	+1.05	12.60	1.80	+0.78	43.3	ABOVE NORMAL	
COLEBROOK 73	1995	7.30	+0.26	+0.02	7.52	0.90	+0.22	24.4	NORMAL	
CONCORD 2	1963	34.31	+0.02	+0.25	41.09	6.53	+6.78	103.8	ABOVE NORMAL	
CONCORD 4	1966	15.95	+0.12	+0.75	16.73	2.45	+0.78	31.8	ABOVE NORMAL	
DEERFIELD 46	1984	37.95	-0.23	---	38.04	0.52	+0.09	17.3	NORMAL	
ENFIELD 30	1990	4.07	-0.15	+33.95	4.42	2.67	+0.35	13.1	NORMAL	
ERROL 1	1966	12.9	+0.1	-1.3	12.0	2.7	-0.9	-32.8	BELOW NORMAL	
FRANKLIN 1	1966	9.66	-0.13	-0.44	10.75	4.02	+1.09	27.1	NORMAL	
GREENFIELD 75	1995	58.29	-0.07	---	59.89	2.96	+1.60	54.1	ABOVE NORMAL	
HOOKSETT 5	1965	48.14	-0.42	+10.56	47.30	2.12	-0.84	-39.6	BELOW NORMAL	
KEENE 2	1963	3.40	-0.22	+44.67	4.11	2.29	+0.71	31.0	ABOVE NORMAL	
LANCASTER 1	1966	2.10	-0.40	1.60	1.96	0.54	-0.14	-25.90	NORMAL	
LEE 1	1953	29.99	+0.46	-28.29	30.95	1.35	+0.96	71.1	ABOVE NORMAL	
LISBON 19	1990	14.19	-0.41	+16.37	14.09	0.52	-0.10	-19.2	NORMAL	
NASHUA 218	1964	27.32	-0.29	-13.23	27.67	1.69	+0.35	20.7	NORMAL	
NEW DURHAM 53	1986	18.78	+0.22	---	19.17	1.50	+0.39	26.0	ABOVE NORMAL	
NEW LONDON 1	1947	8.41	+0.80	+19.64	8.73	5.04	+0.32	6.3	NORMAL	
NEWPORT 3	1995	6.31	-0.14	+12.91	5.64	1.00	-0.67	-67.0	BELOW NORMAL	
NEWPORT 6	1995	6.42	-0.16	+4.36	5.70	1.01	-0.72	-71.3	BELOW NORMAL	
OSSIPEE 38	1995	33.98	-0.23	-27.39	34.42	1.33	+0.44	33.1	NORMAL	
SHELBURNE 2	1995	5.31	-0.15	+1.38	4.49	0.79	-0.82	-103.8	BELOW NORMAL	
WARNER 1	1965	28.87	-0.61	+4.91	28.98	3.70	+0.11	3.0	NORMAL	

Source: USGS, NH DES

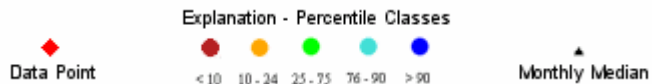
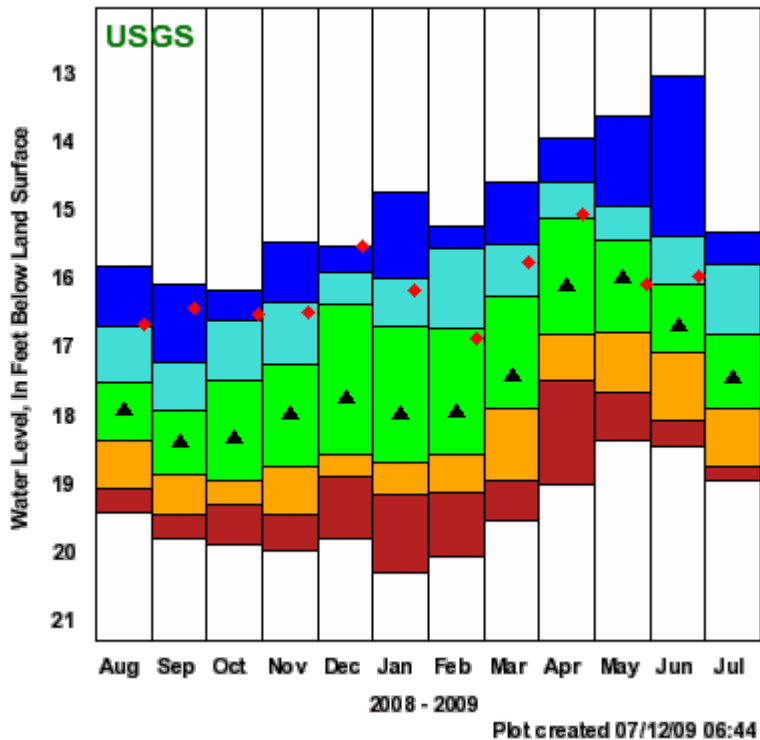
CONCORD 2

431224071303601 - NH-CVW 2



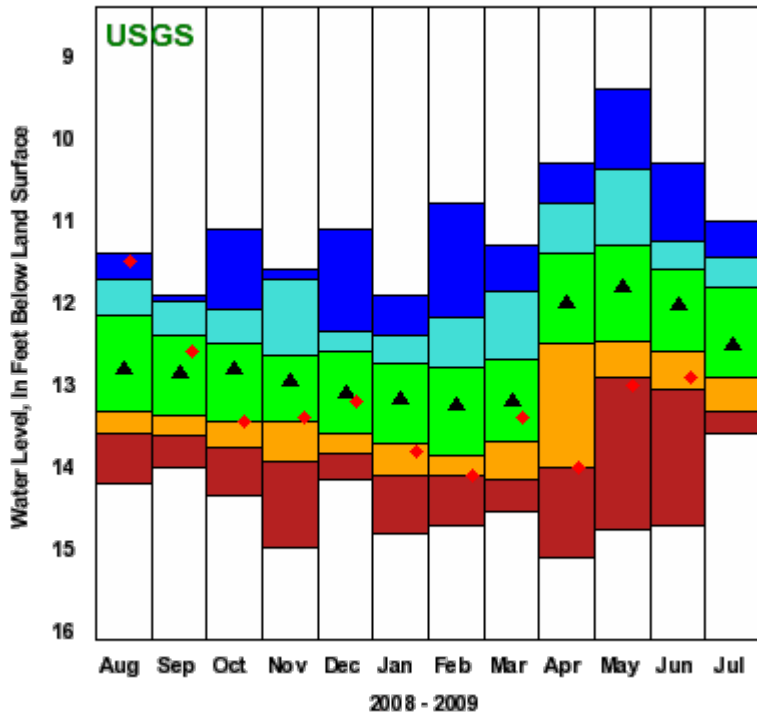
CONCORD 4

431049071324301 - NH-CVW 4



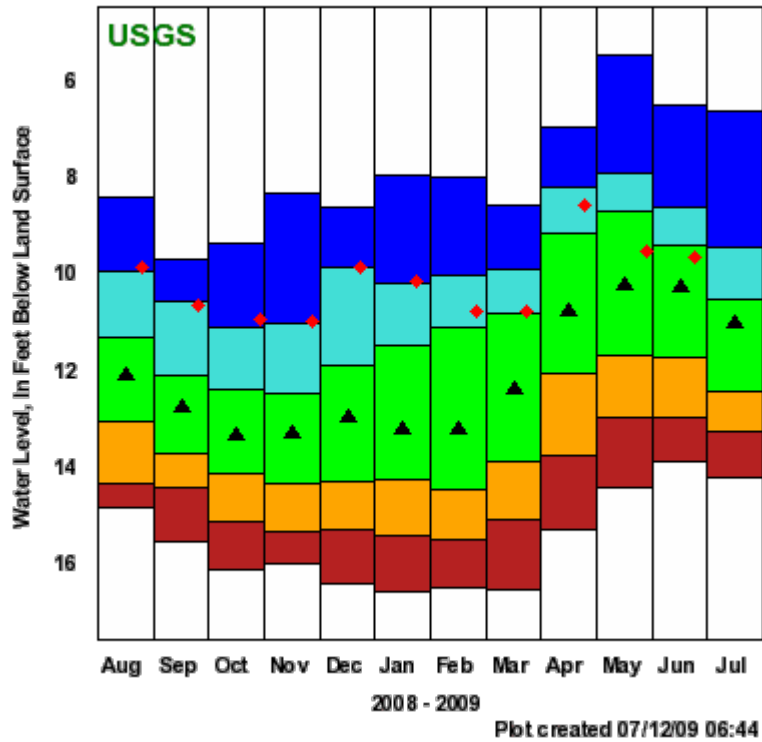
ERROL 1

444733071094901 - NH-ETW 1



FRANKLIN 1

432428071390701 - NH-FKW 1



Explanation - Percentile Classes

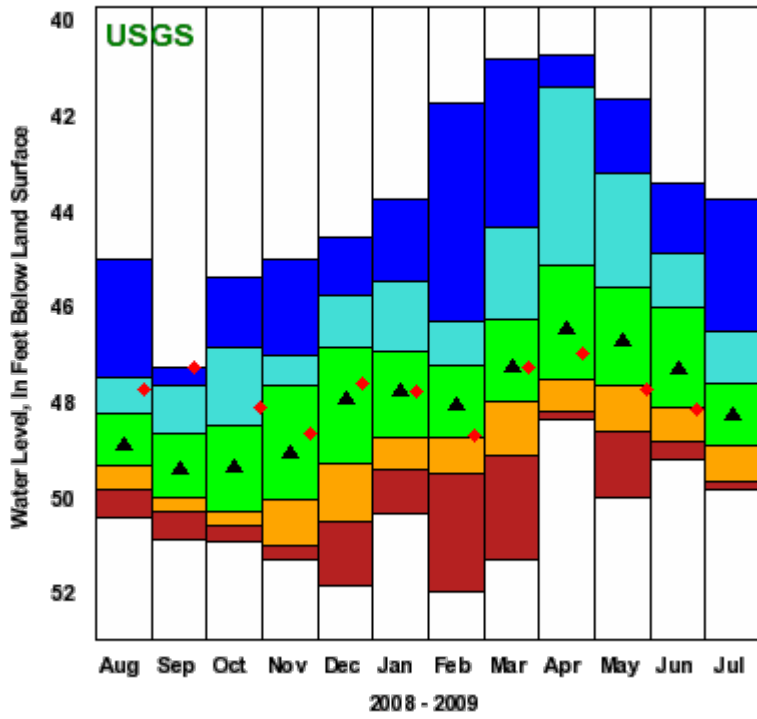
◆ Data Point

● <10 ● 10-24 ● 25-75 ● 76-90 ● >90

▲ Monthly Median

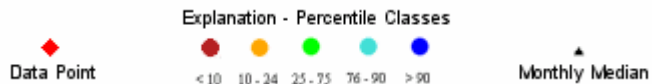
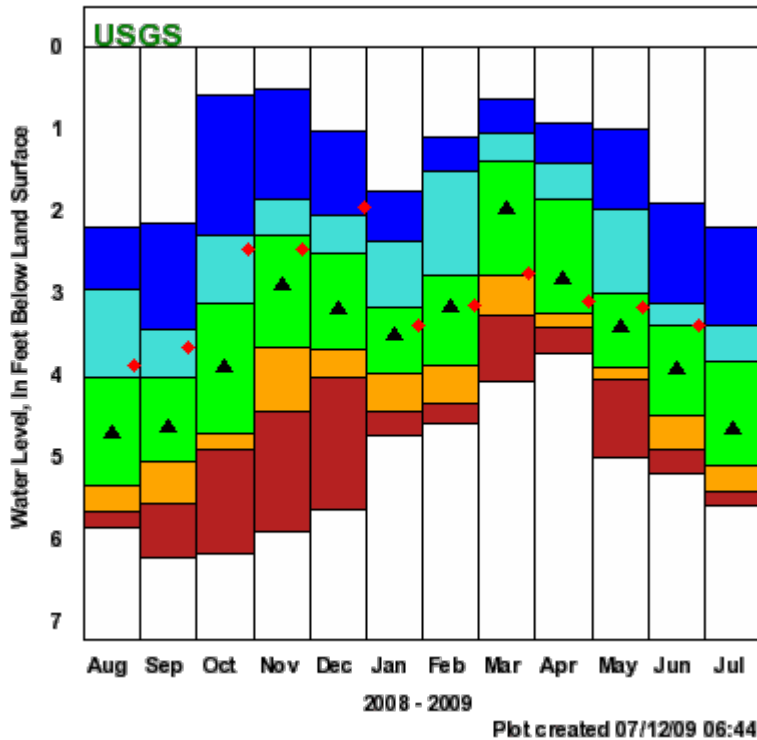
HOOKSETT 5

430235071275501 - NH-HTW 5



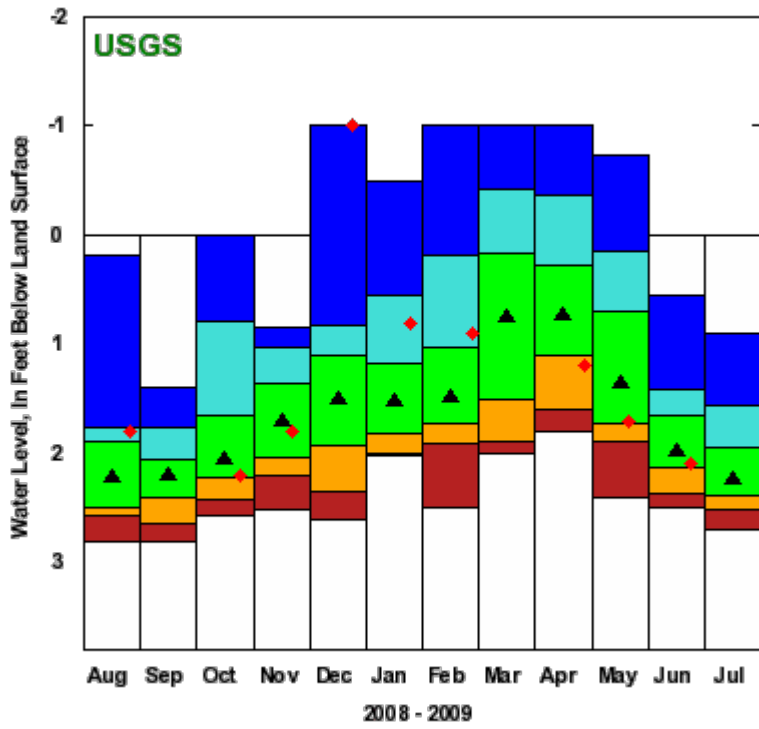
KEENE 2

425543072175801 - NH-KEW 2



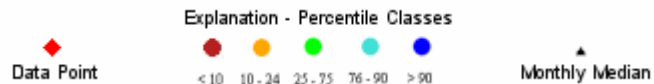
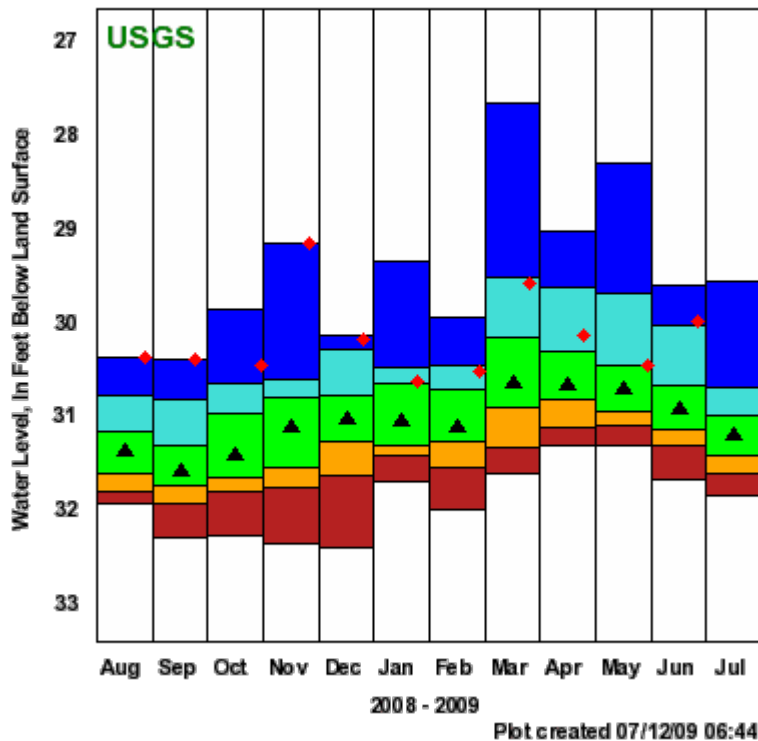
LANCASTER 1

442830071321001 - NH-LCW 1



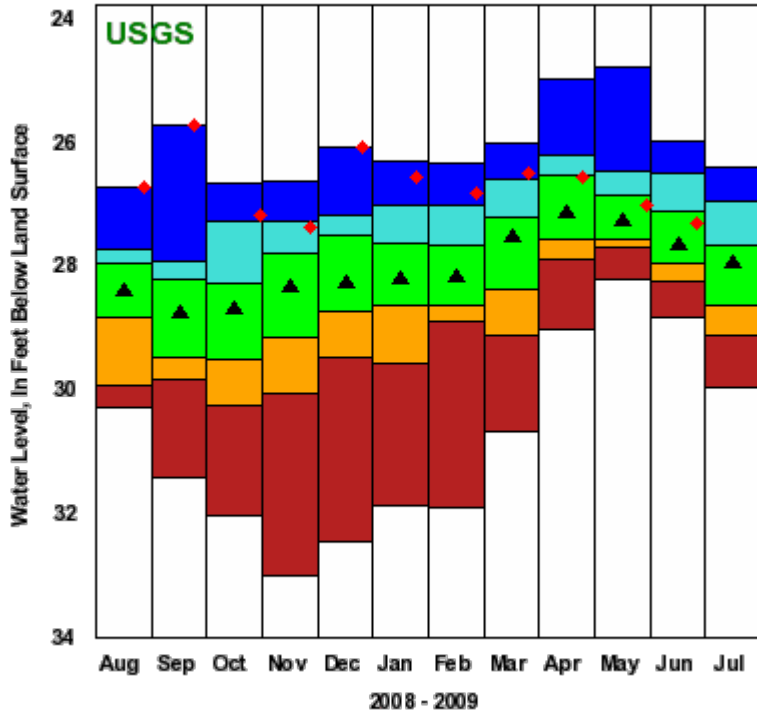
LEE 1

430721071005001 - NH-LIW 1



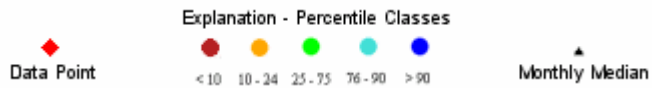
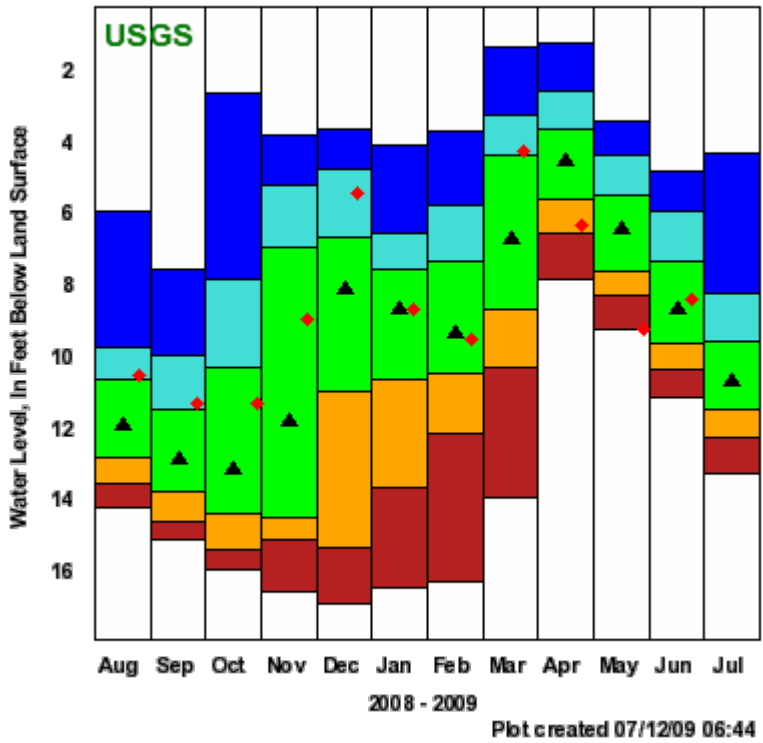
NASHUA 218

424800071295301 - NH-NAW 218



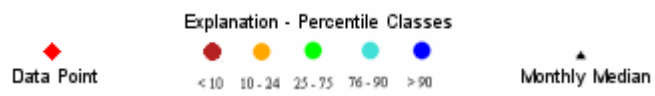
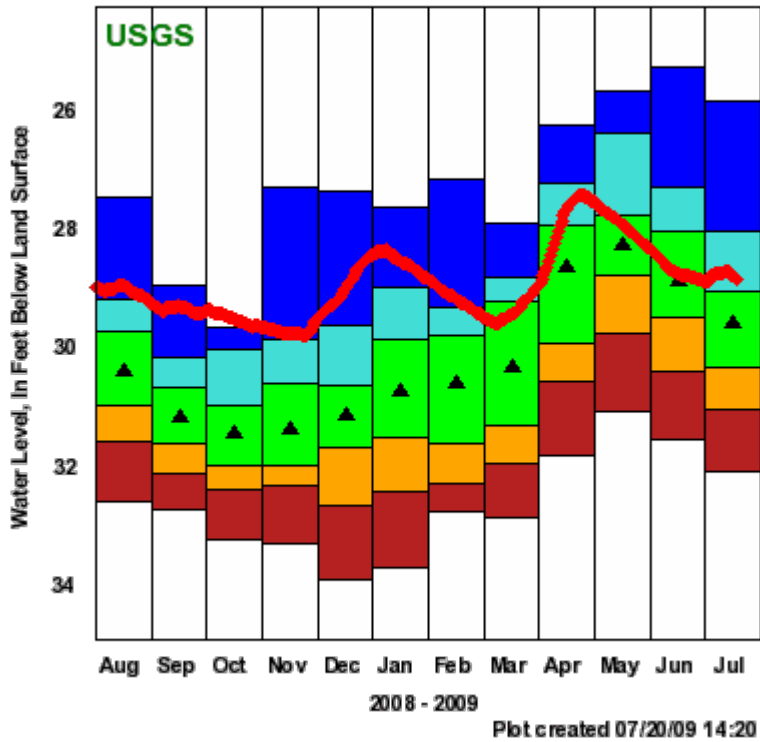
NEW LONDON 1

432343071570901 - NH-NLW 1



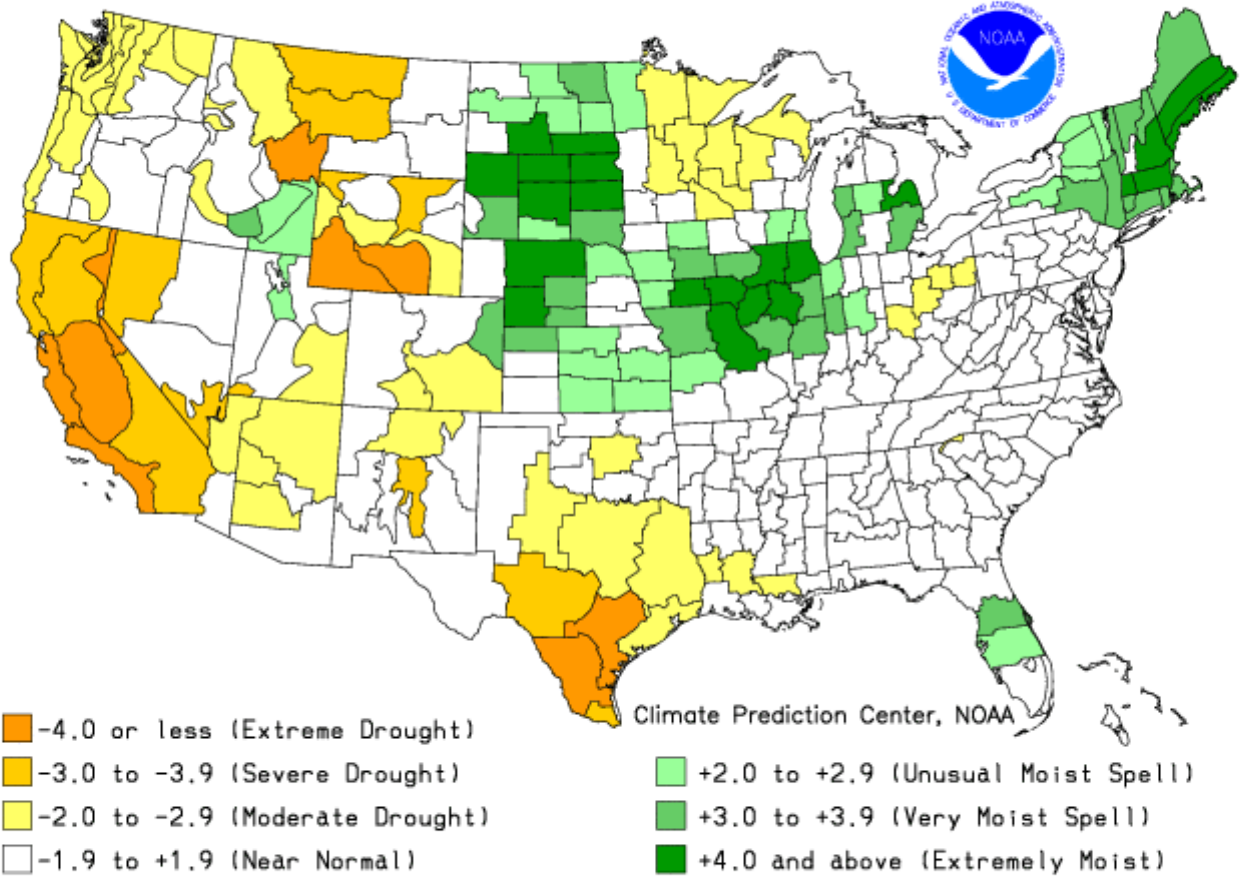
WARNER 1

431540071452801 - NH-WCW 1 Warner, NH



Source: USGS, NH DES, Dam Bureau,

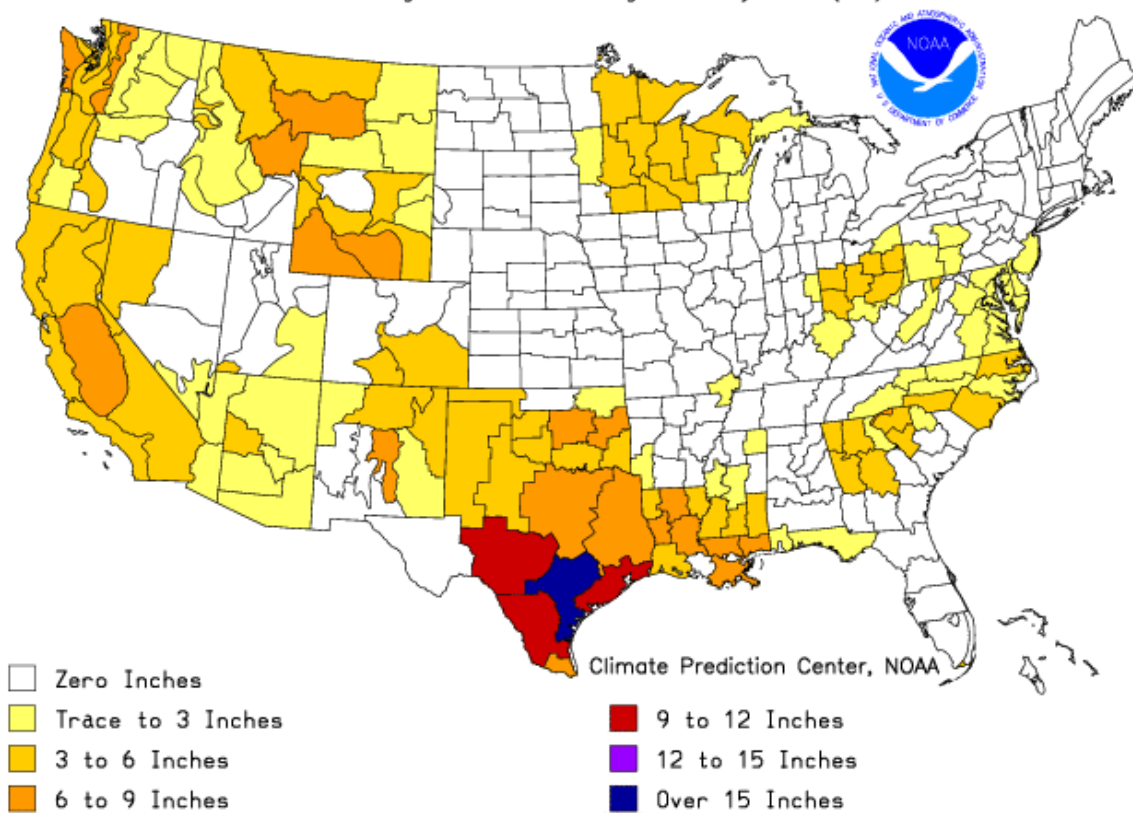
Drought Severity Index by Division  
Weekly Value for Period Ending JUL 18, 2009  
Long Term Palmer



### THE PALMER DROUGHT SEVERITY INDEX

The Palmer Index uses temperature and rainfall information in a formula to determine dryness. The advantage of the Palmer Index is that it is standardized to local climate.

Additional Precip. Needed (In.) to Bring PDI to  $-0.5$   
Weekly Value for Period Ending JUL 18, 2009  
Long Term Palmer Drought Severity Index (PDI)



This is the amount of rainfall required in a week's time to bring the index back to zero inches required.