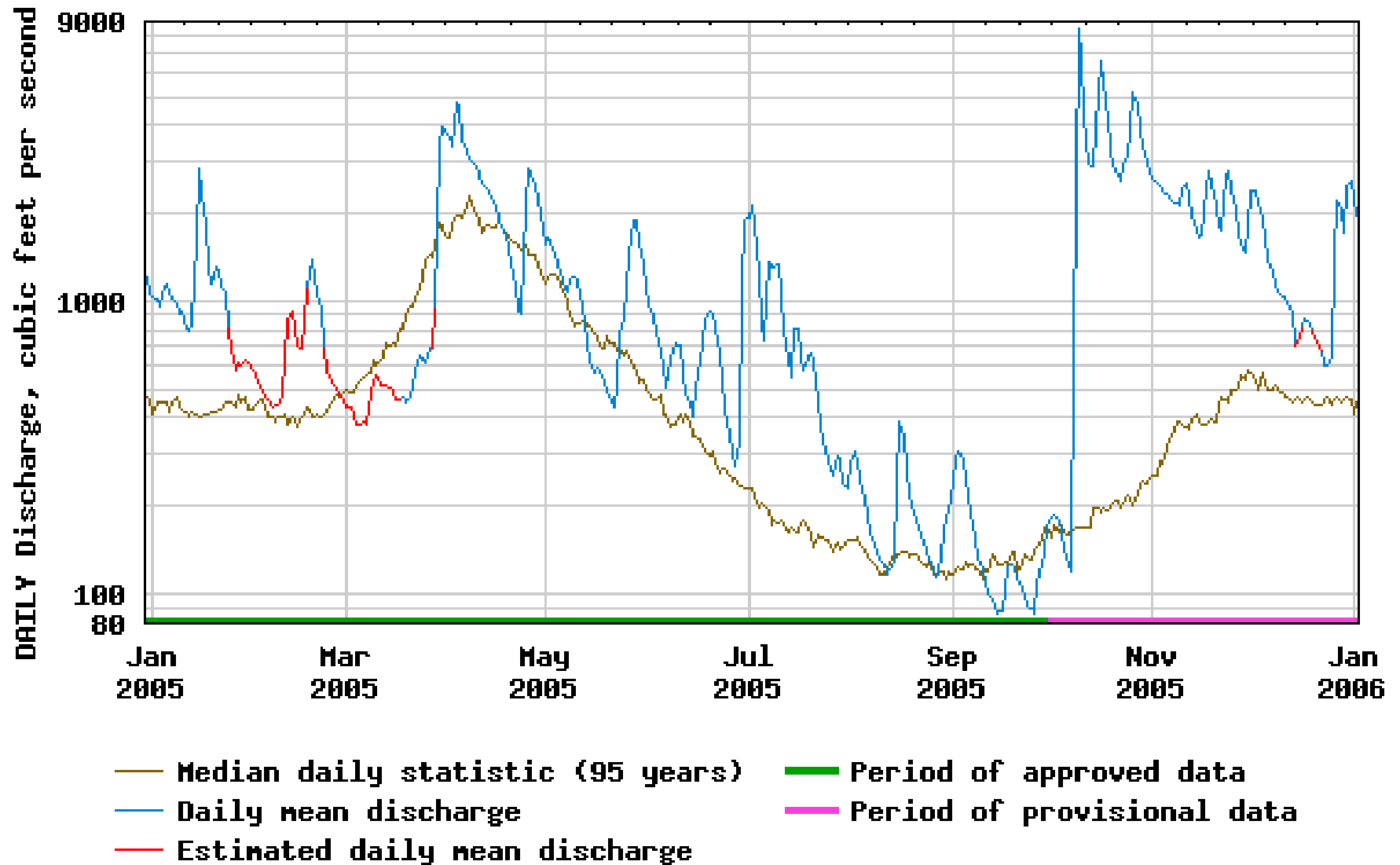


Appendix B
Hydrographs for Reference Stream Gages

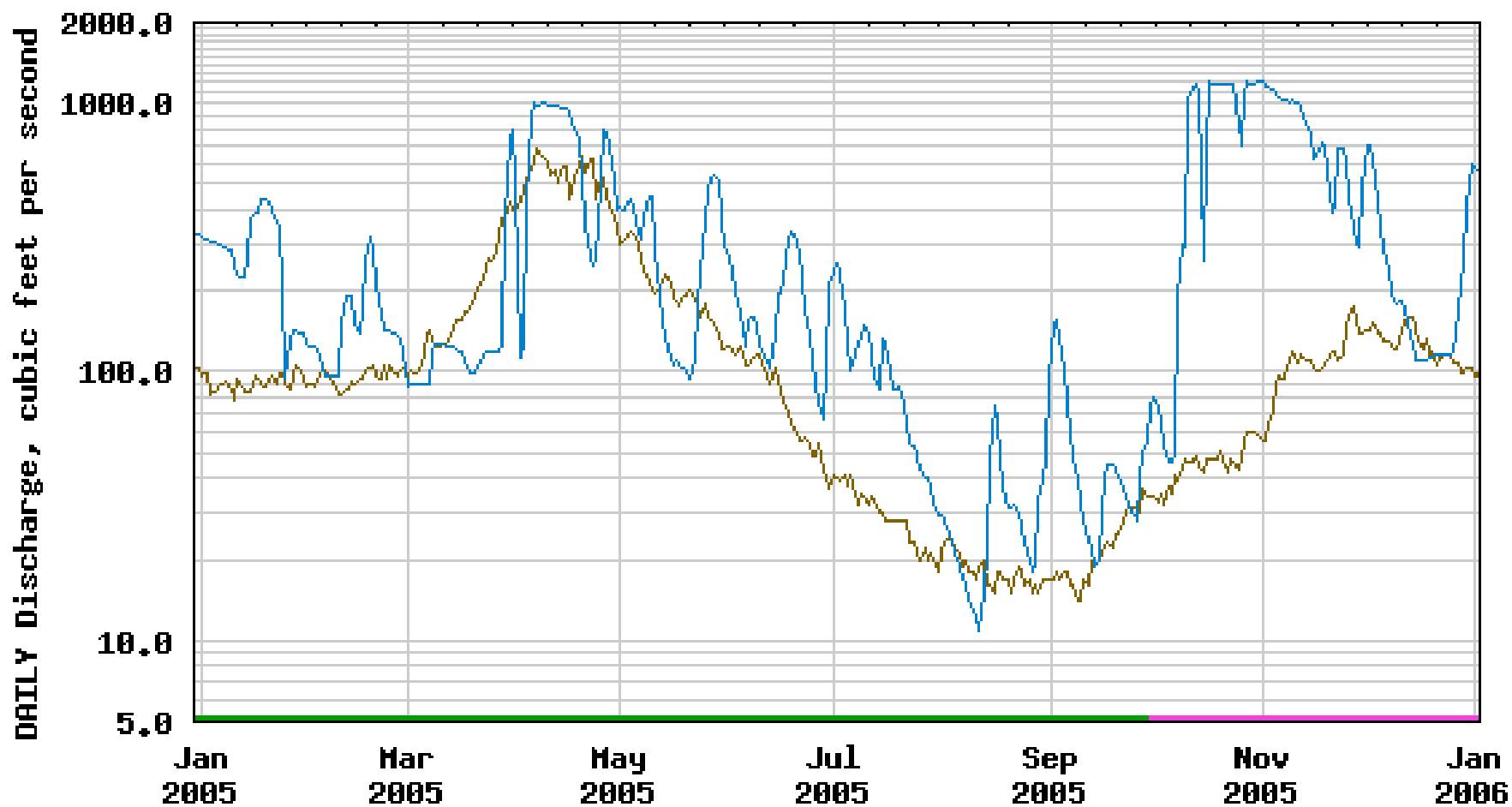


USGS 01161000 ASHUELOT RIVER AT HINSDALE, NH





USGS 01158000 ASHUELOT RIVER BELOW SURRY MT DAM, NEAR KEENE, NH



— Median daily statistic (54 years)

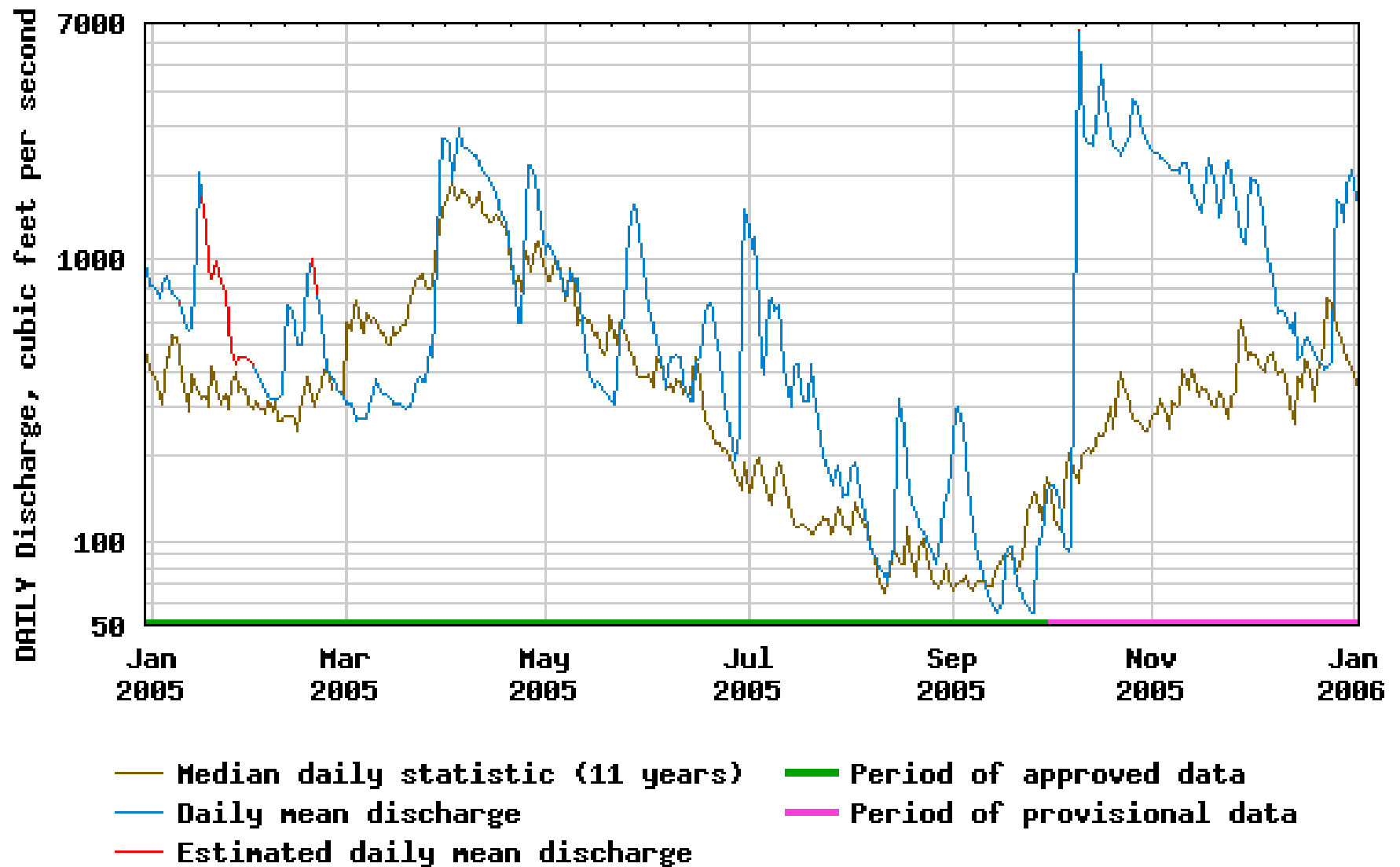
— Daily mean discharge

— Period of approved data

— Period of provisional data

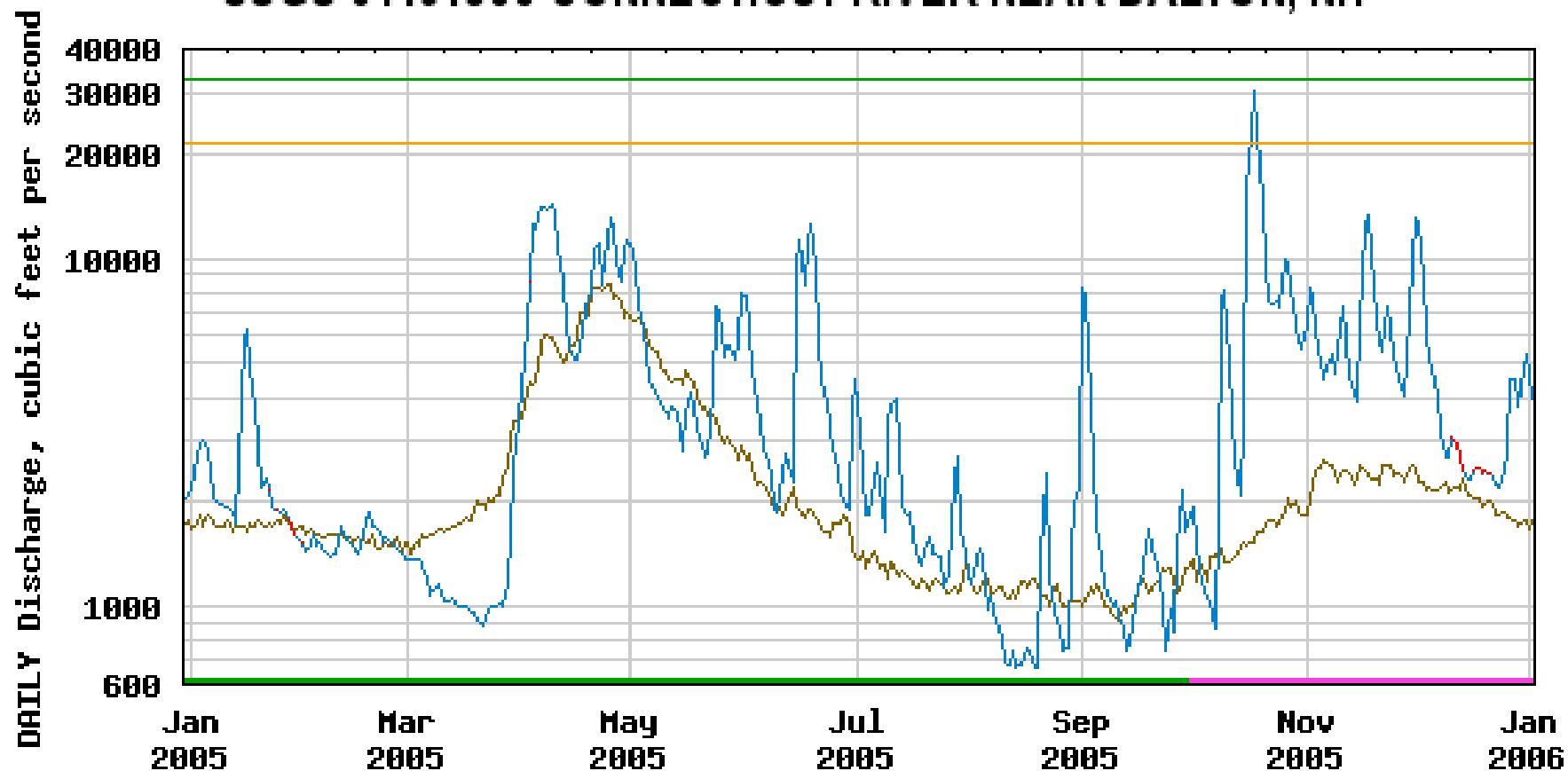


USGS 01160350 ASHUELOT RIVER AT WEST SWANZEY, NH





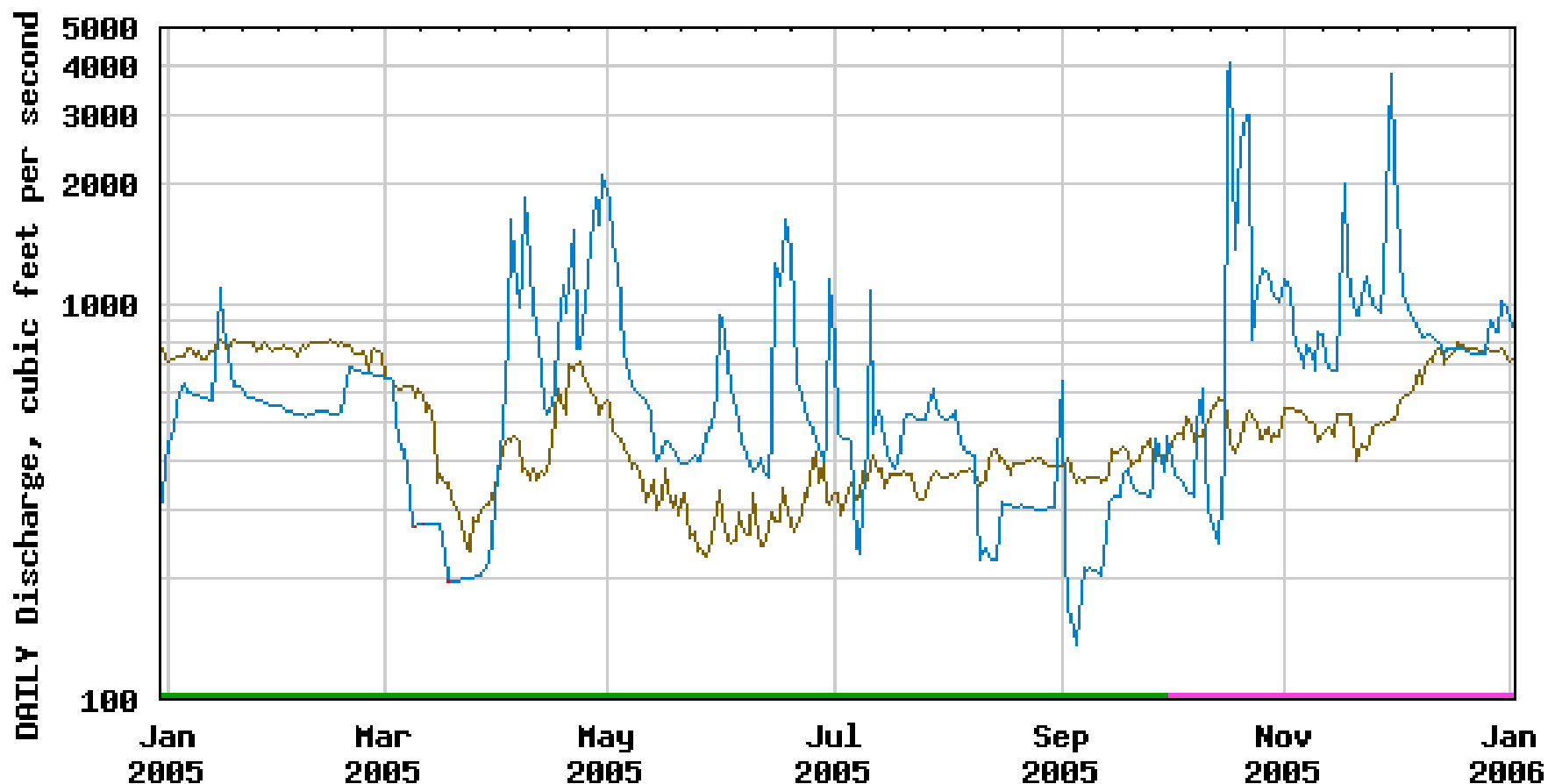
USGS 01131500 CONNECTICUT RIVER NEAR DALTON, NH



- Median daily statistic (78 years)
- Daily mean discharge
- Estimated daily mean discharge
- Period of approved data
- Period of provisional data
- 10-Yr Recurrence Interval
- 2-Yr Recurrence Interval



USGS 01129200 CONNECTICUT R BELOW INDIAN STREAM NR PITTSBURG, NH



— Median daily statistic (49 years)

— Daily mean discharge

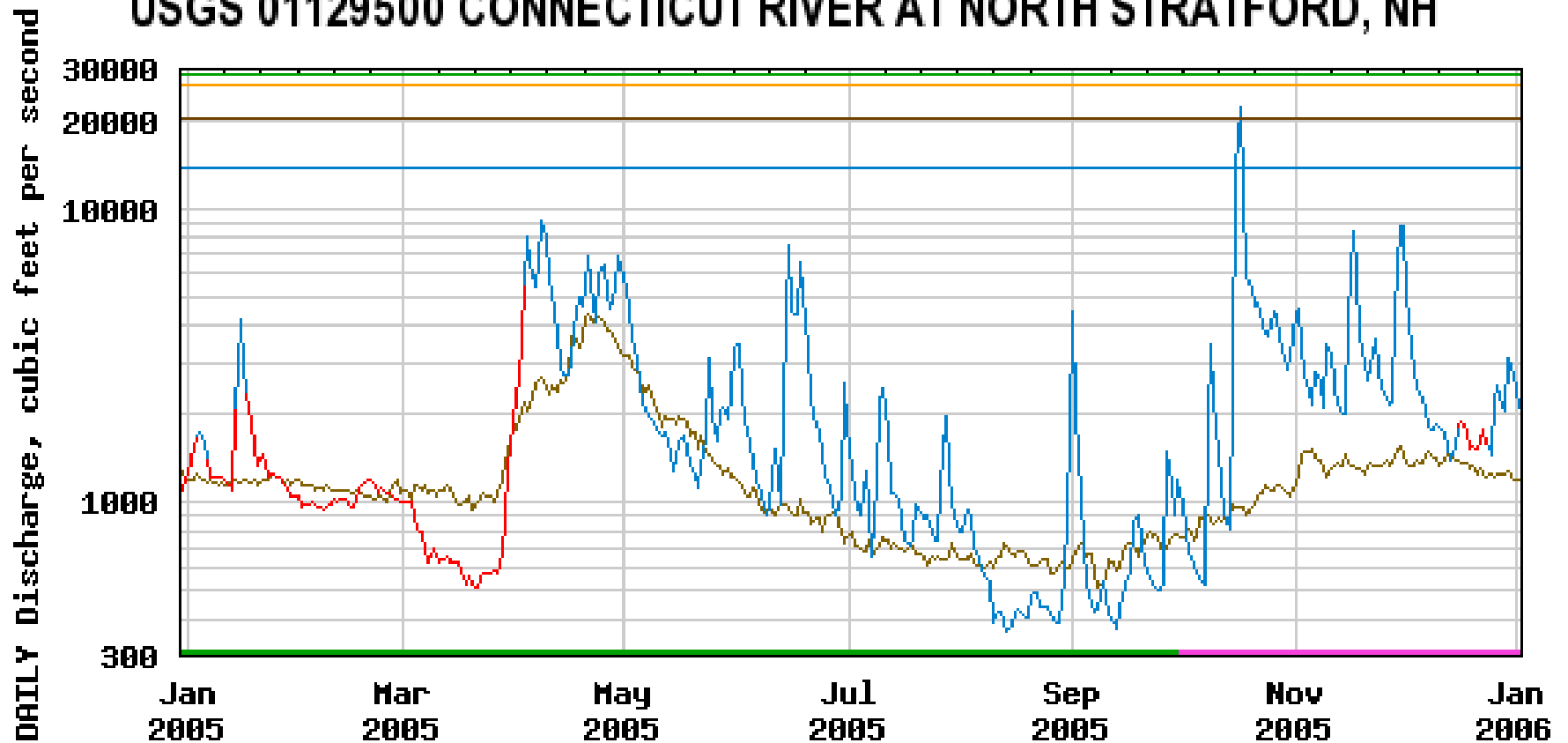
— Estimated daily mean discharge

— Period of approved data

— Period of provisional data



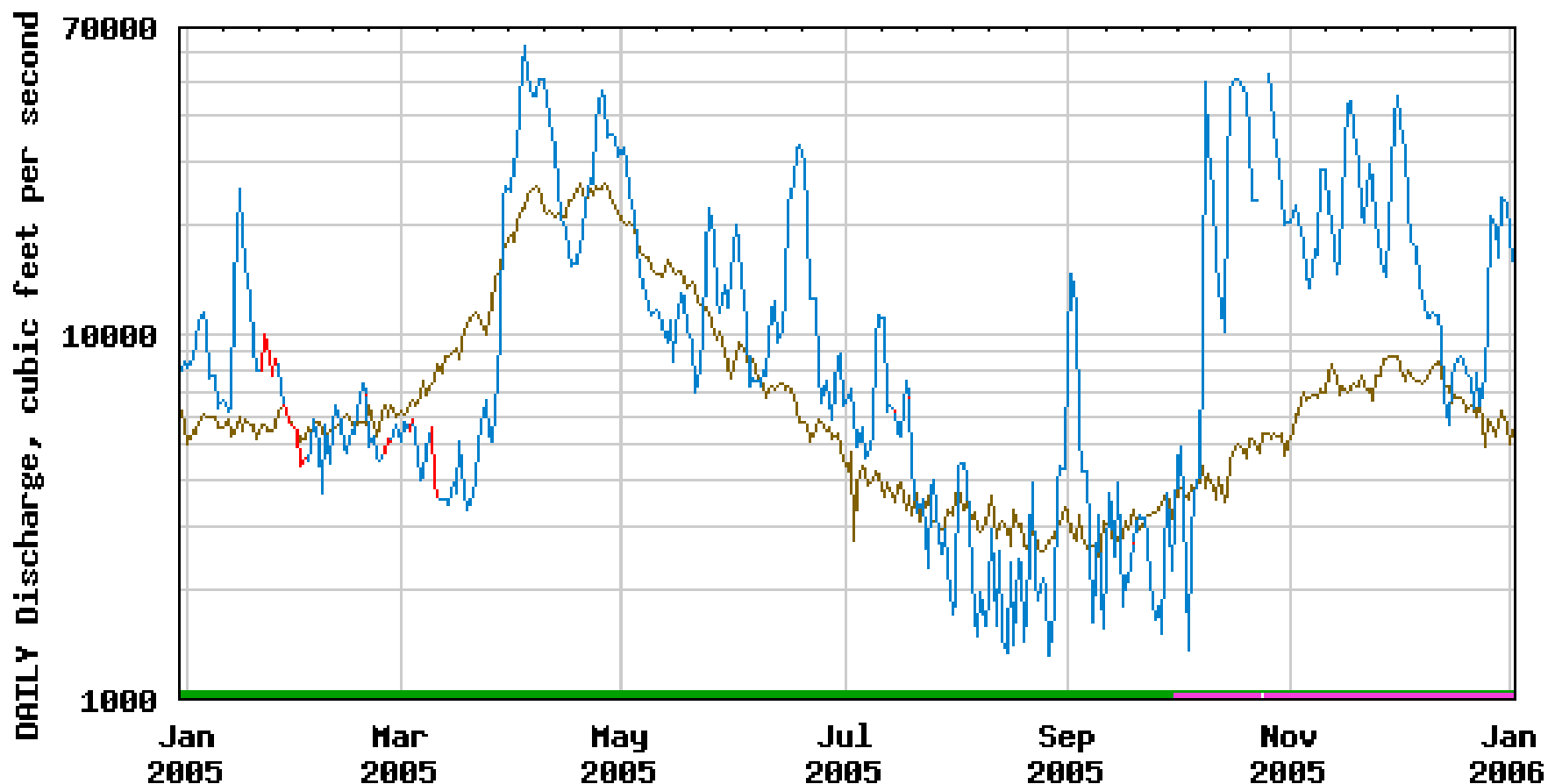
USGS 01129500 CONNECTICUT RIVER AT NORTH STRATFORD, NH



- Median daily statistic (75 years)
- Daily mean discharge
- Estimated daily mean discharge
- Period of approved data
- Period of provisional data
- 100-Yr Recurrence Interval
- 50-Yr Recurrence Interval
- 10-Yr Recurrence Interval
- 2-Yr Recurrence Interval



USGS 01154500 CONNECTICUT RIVER AT NORTH WALPOLE, NH



— Median daily statistic (63 years)

— Daily mean discharge

— Estimated daily mean discharge

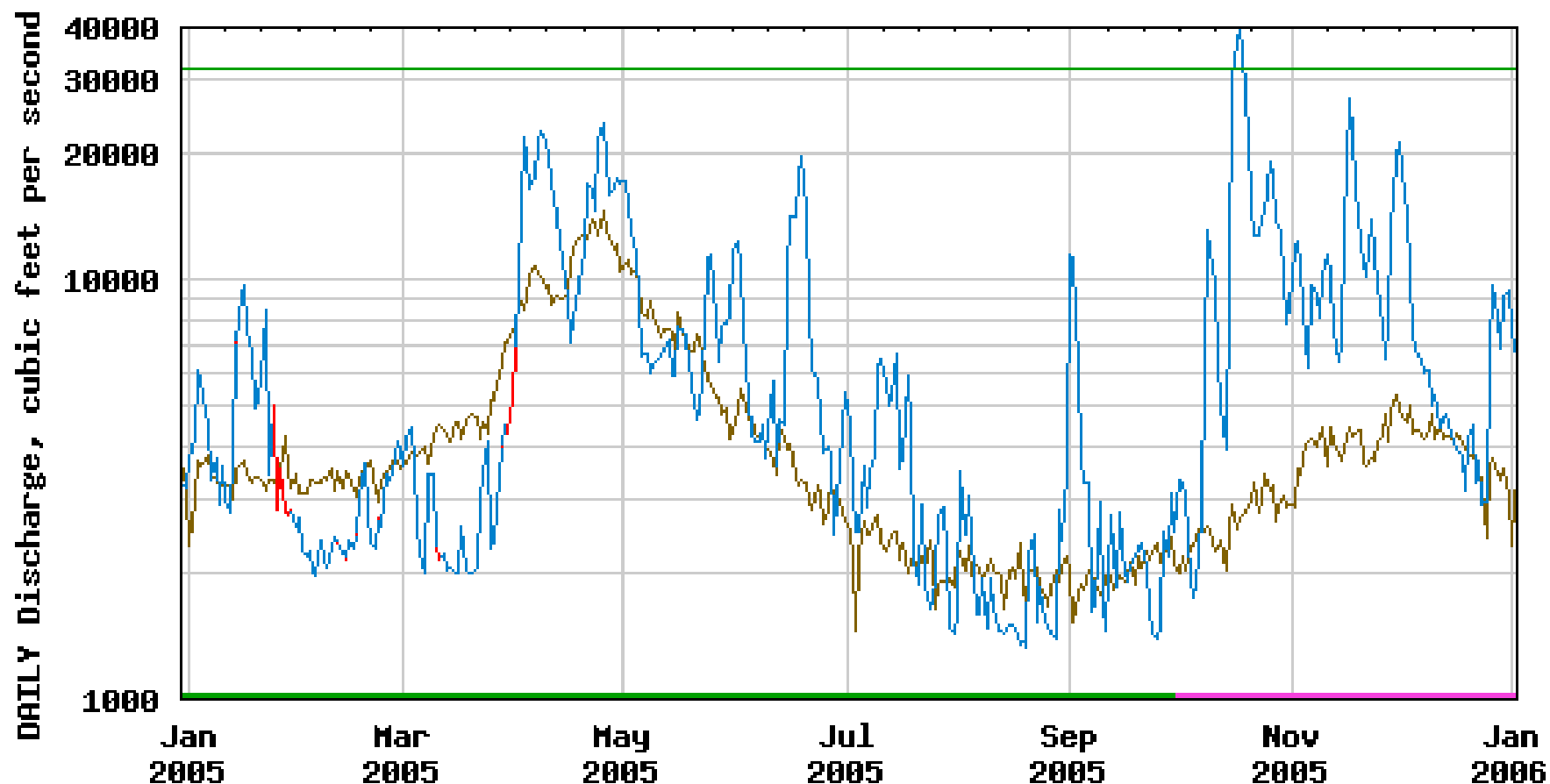
— Period of approved data

— Period of provisional data

— 7-day, 10-year low flow



USGS 01138500 CONNECTICUT RIVER AT WELLS RIVER, VT



— Median daily statistic (55 years)

— Daily mean discharge

— Estimated daily mean discharge

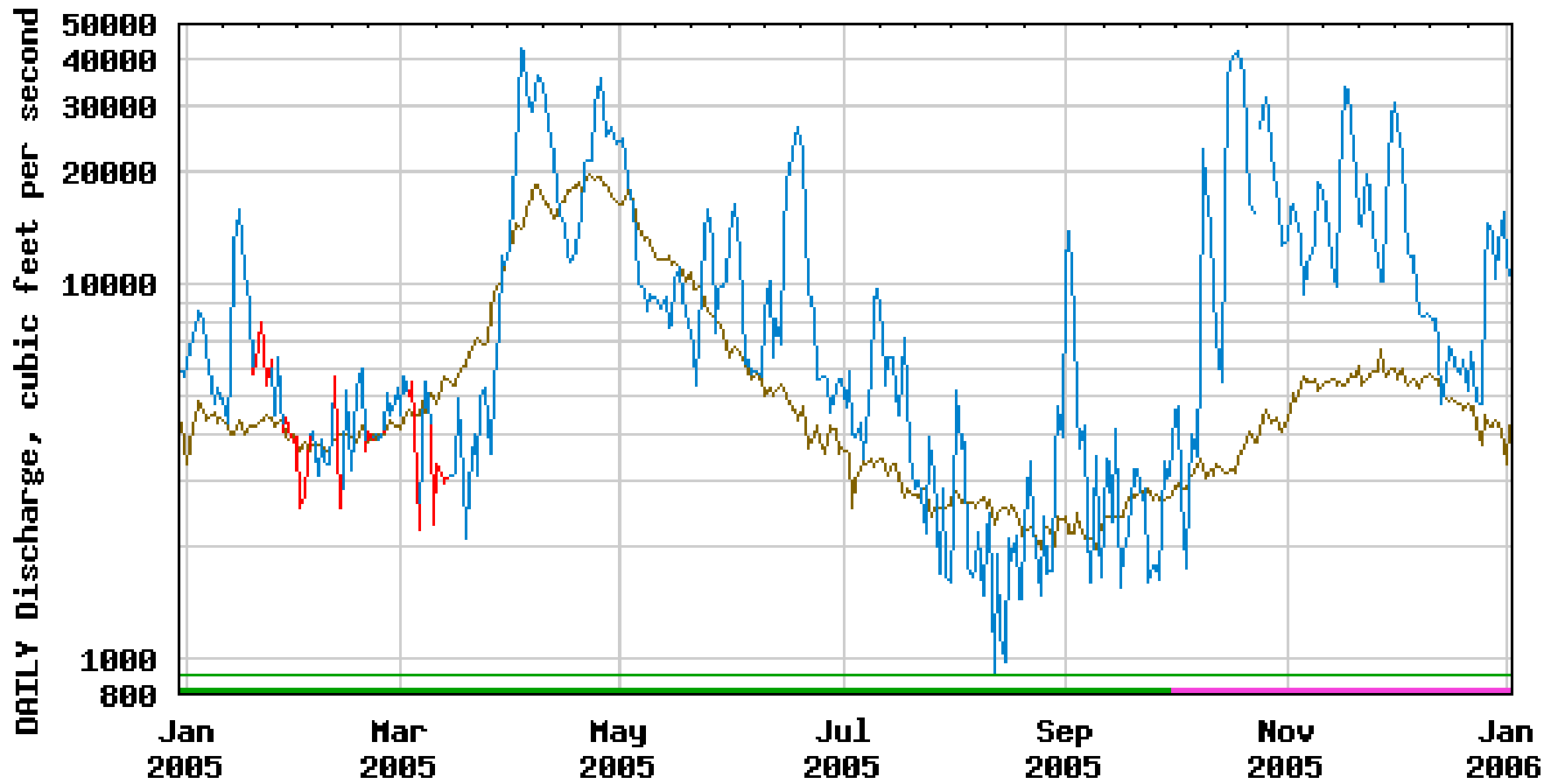
— Period of approved data

— Period of provisional data

— 2-yr Recurrence Interval



USGS 01144500 CONNECTICUT RIVER AT WEST LEBANON, NH



— Median daily statistic (85 years)

— Daily mean discharge

— Estimated daily mean discharge

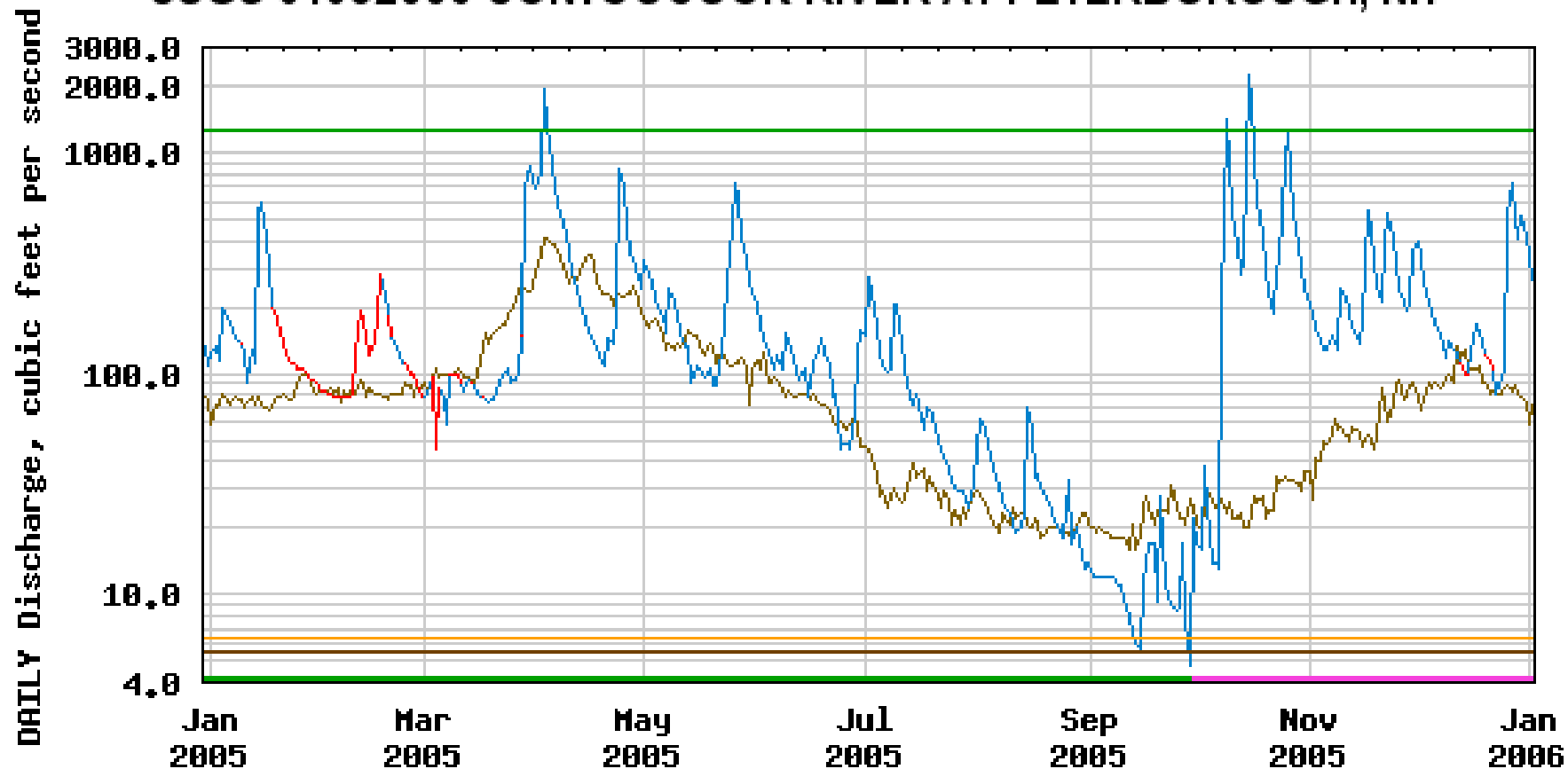
— Period of approved data

— Period of provisional data

— 7-day, 10-year low flow



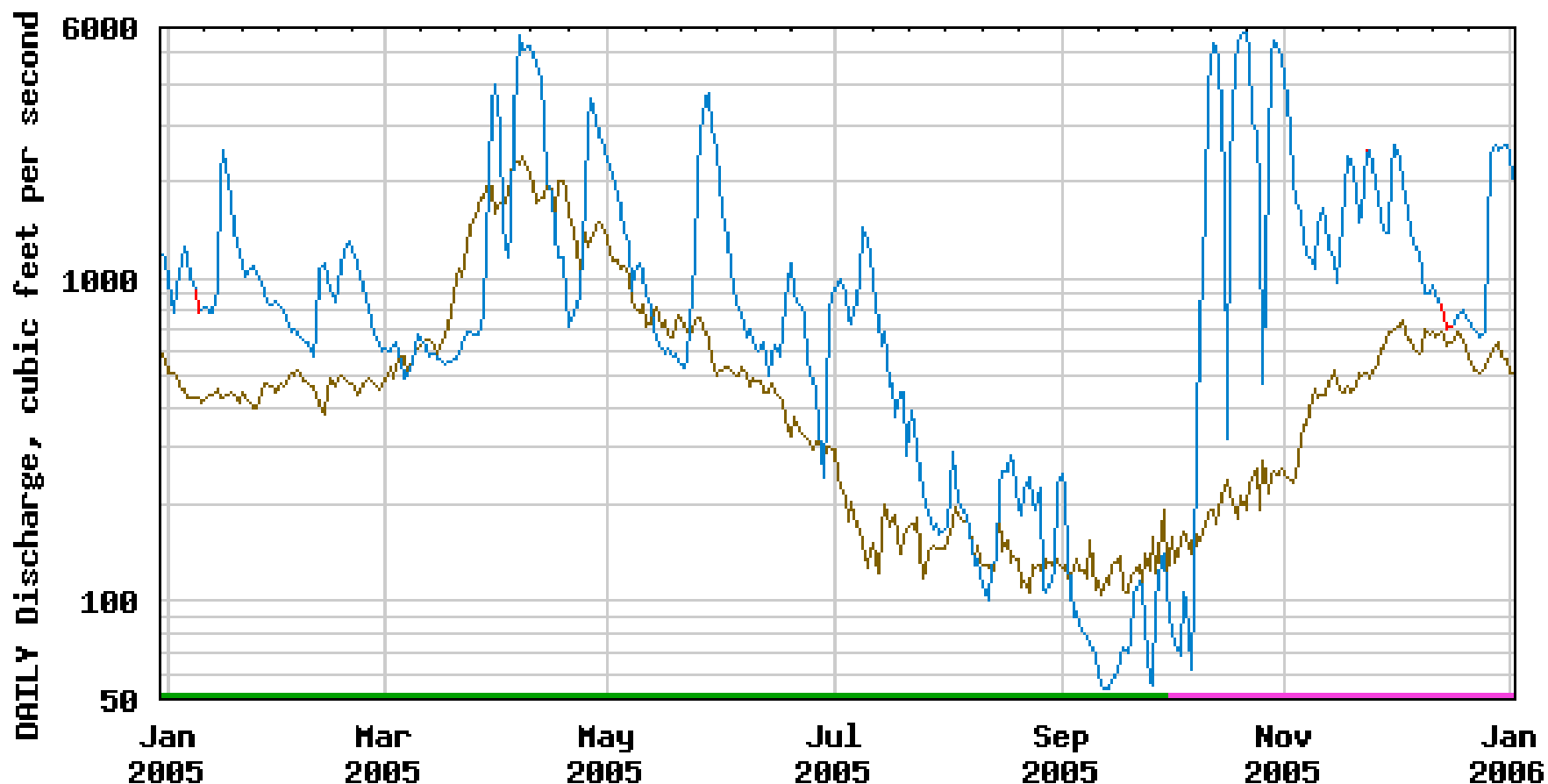
USGS 01082000 CONTOOCOOK RIVER AT PETERBOROUGH, NH



- Median daily statistic (36 years)
- Daily mean discharge
- Estimated daily mean discharge
- Period of approved data
- Period of provisional data
- 2-Year Recurrence Interval
- 7-day, 10-year low flow
- 99% Flow duration



USGS 01085500 CONTOOCOOK R BL HOPKINTON DAM AT W HOPKINTON, NH



— Median daily statistic (30 years)

— Daily mean discharge

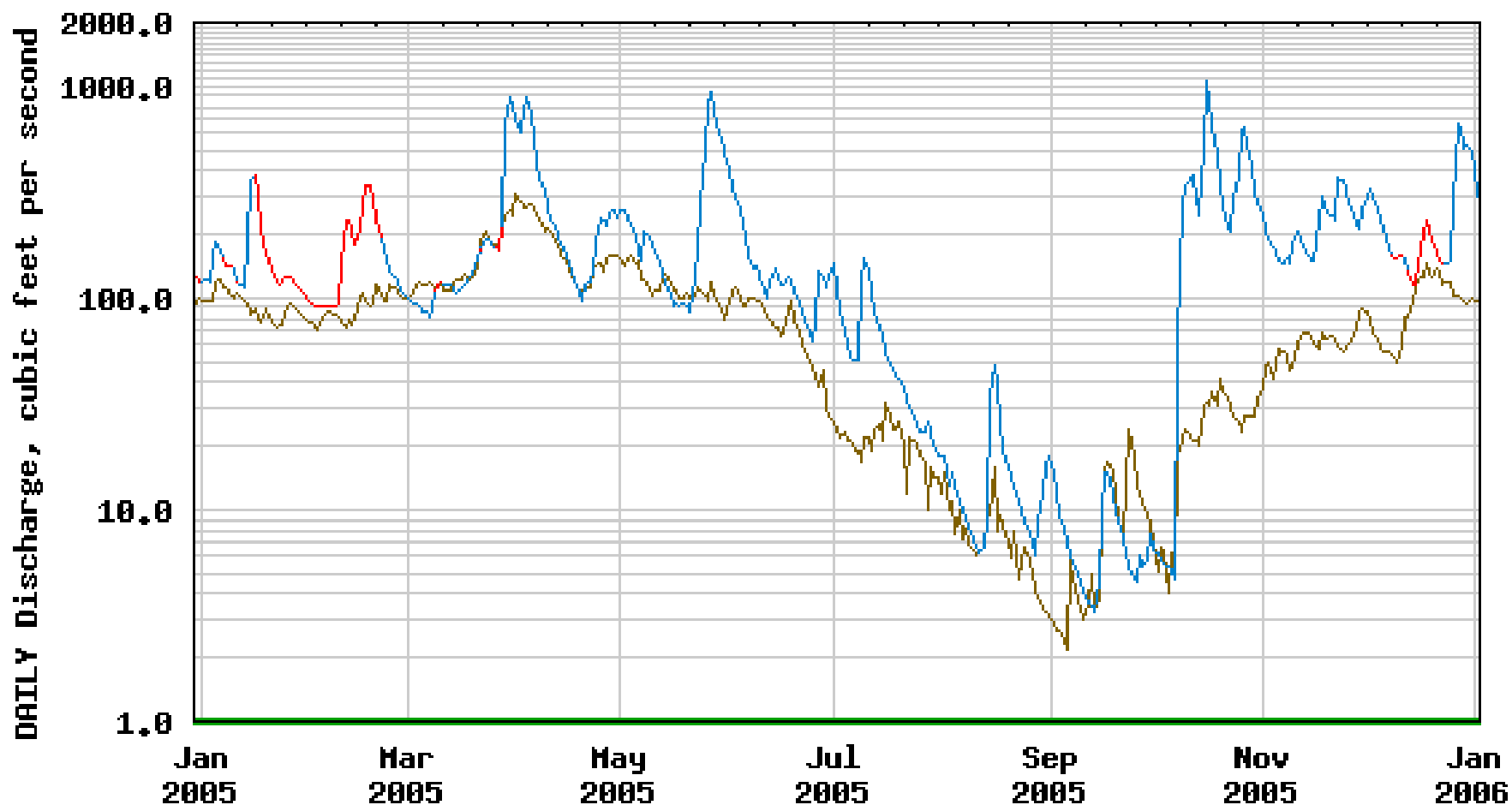
— Estimated daily mean discharge

— Period of approved data

— Period of provisional data



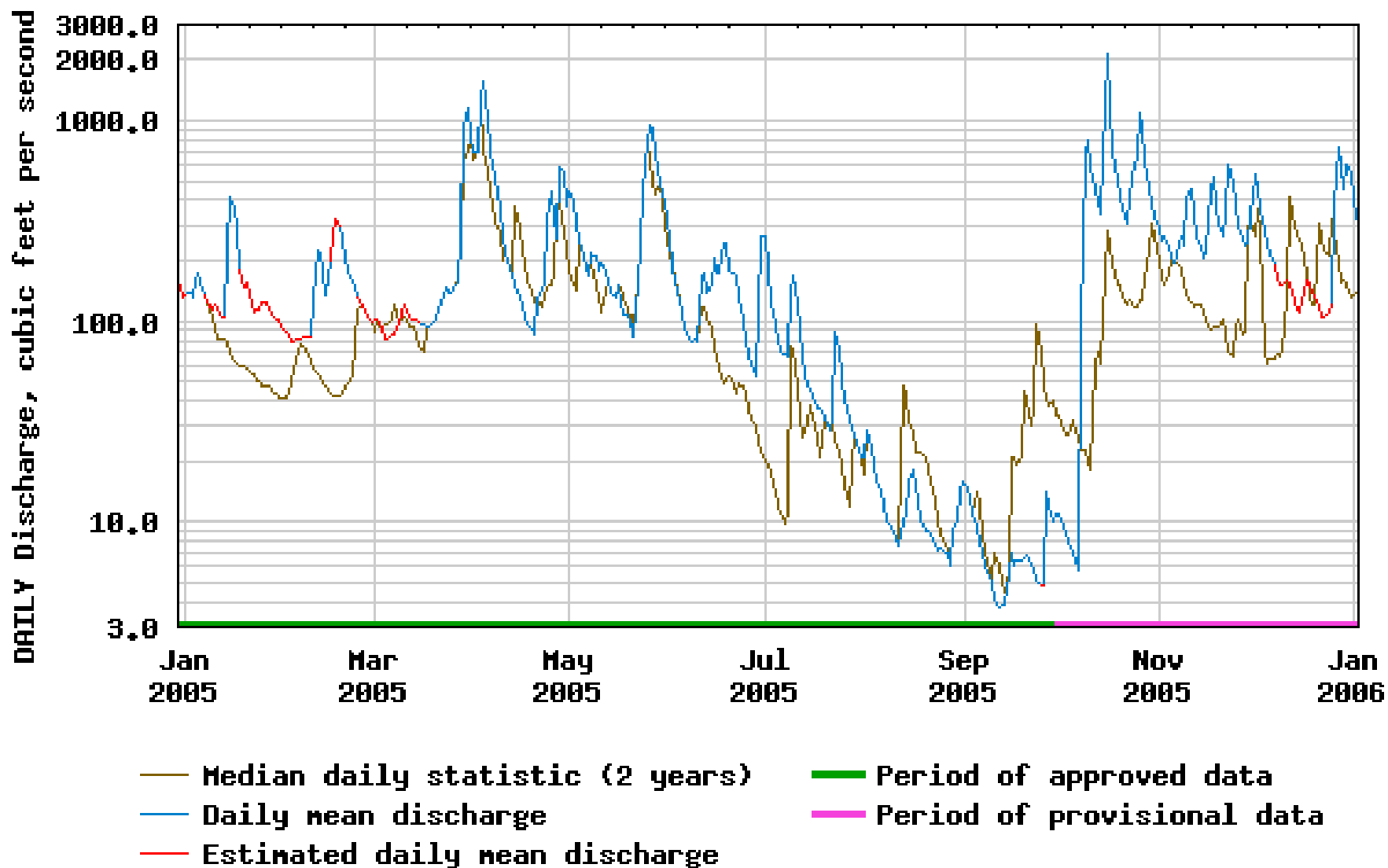
USGS 01073587 EXETER RIVER AT HAIGH ROAD, NEAR BRENTWOOD, NH



— Median daily statistic (10 years) — Estimated daily mean discharge
— Daily mean discharge — Period of approved data

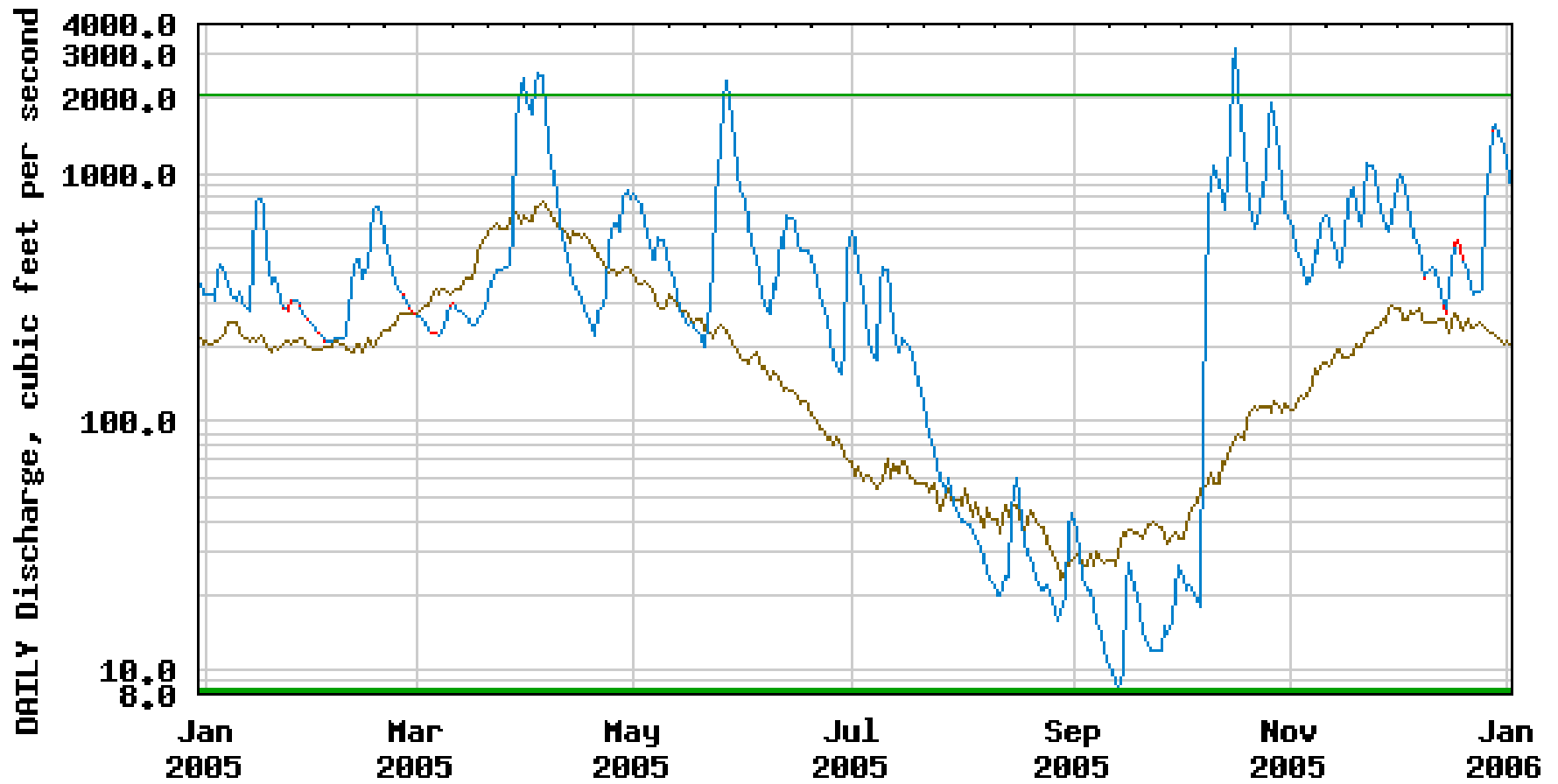


USGS 01072870 ISINGLASS R AT ROCHESTER NECK RD, NR DOVER, NH





USGS 01073500 LAMPREY RIVER NEAR NEWMARKET, NH



— Median daily statistic (72 years)

— Daily mean discharge

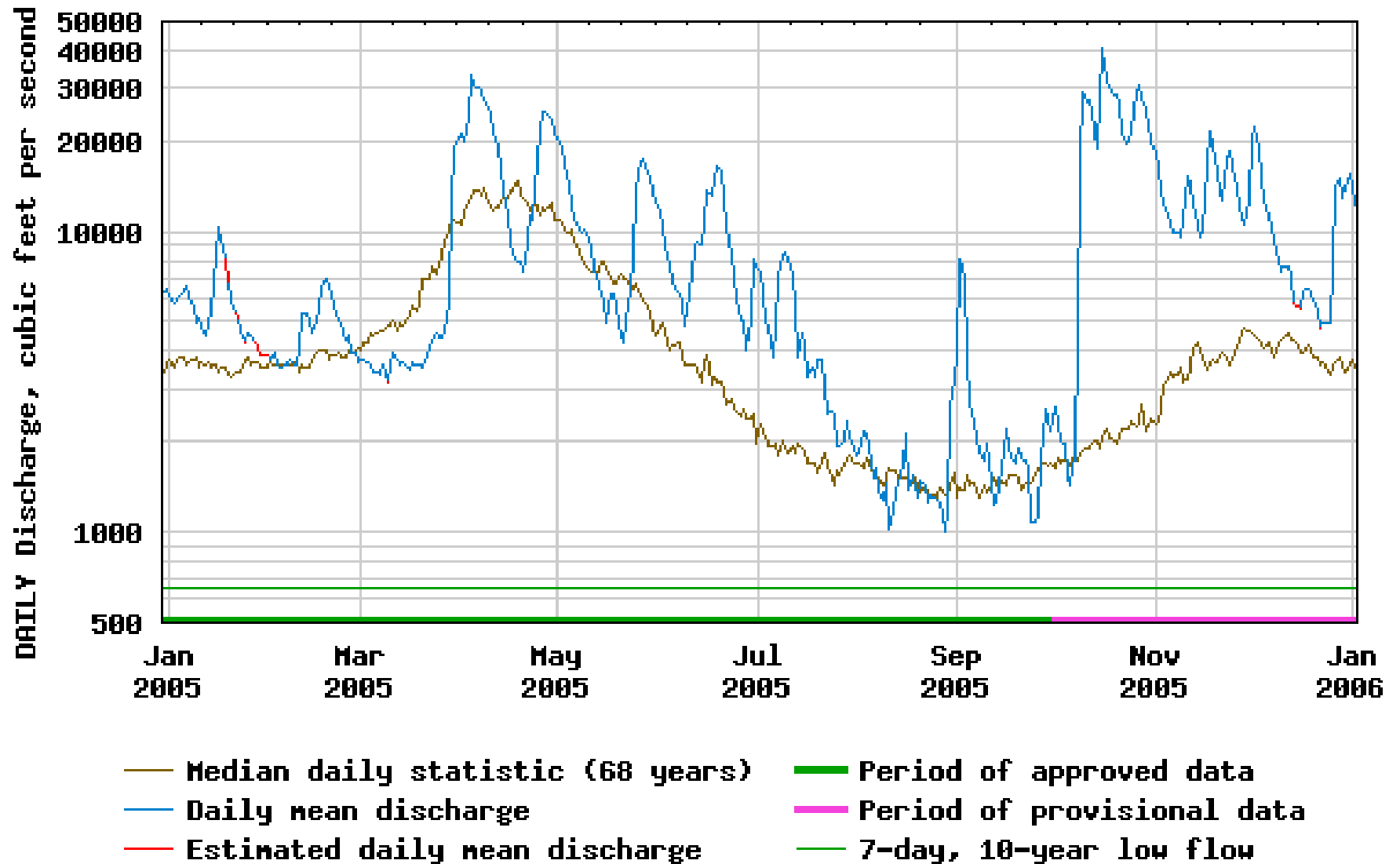
— Estimated daily mean discharge

— Period of approved data

— 2-Year Recurrence Interval

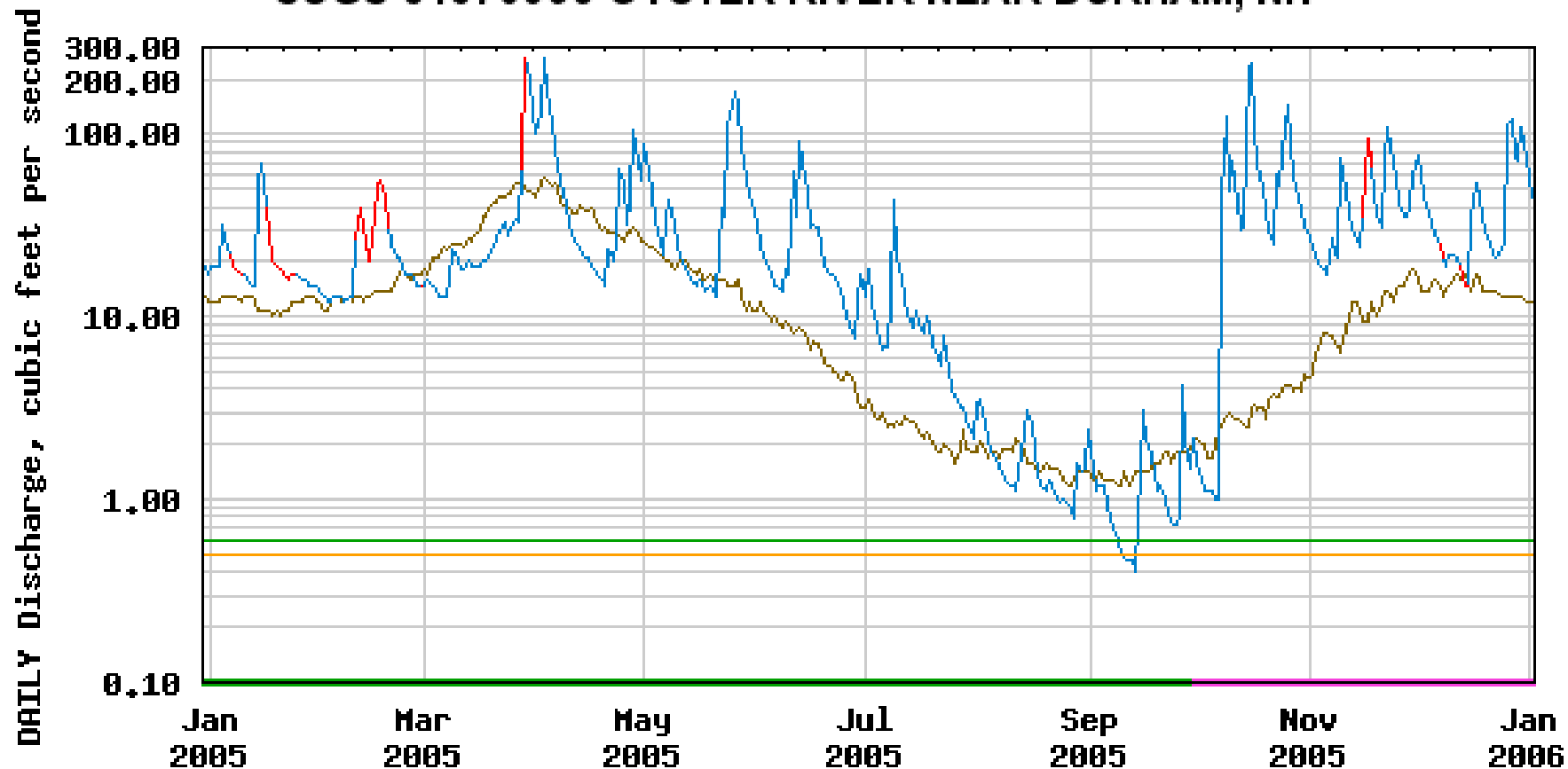


USGS 01092000 MERRIMACK R NR GOFFS FALLS, BELOW MANCHESTER, NH





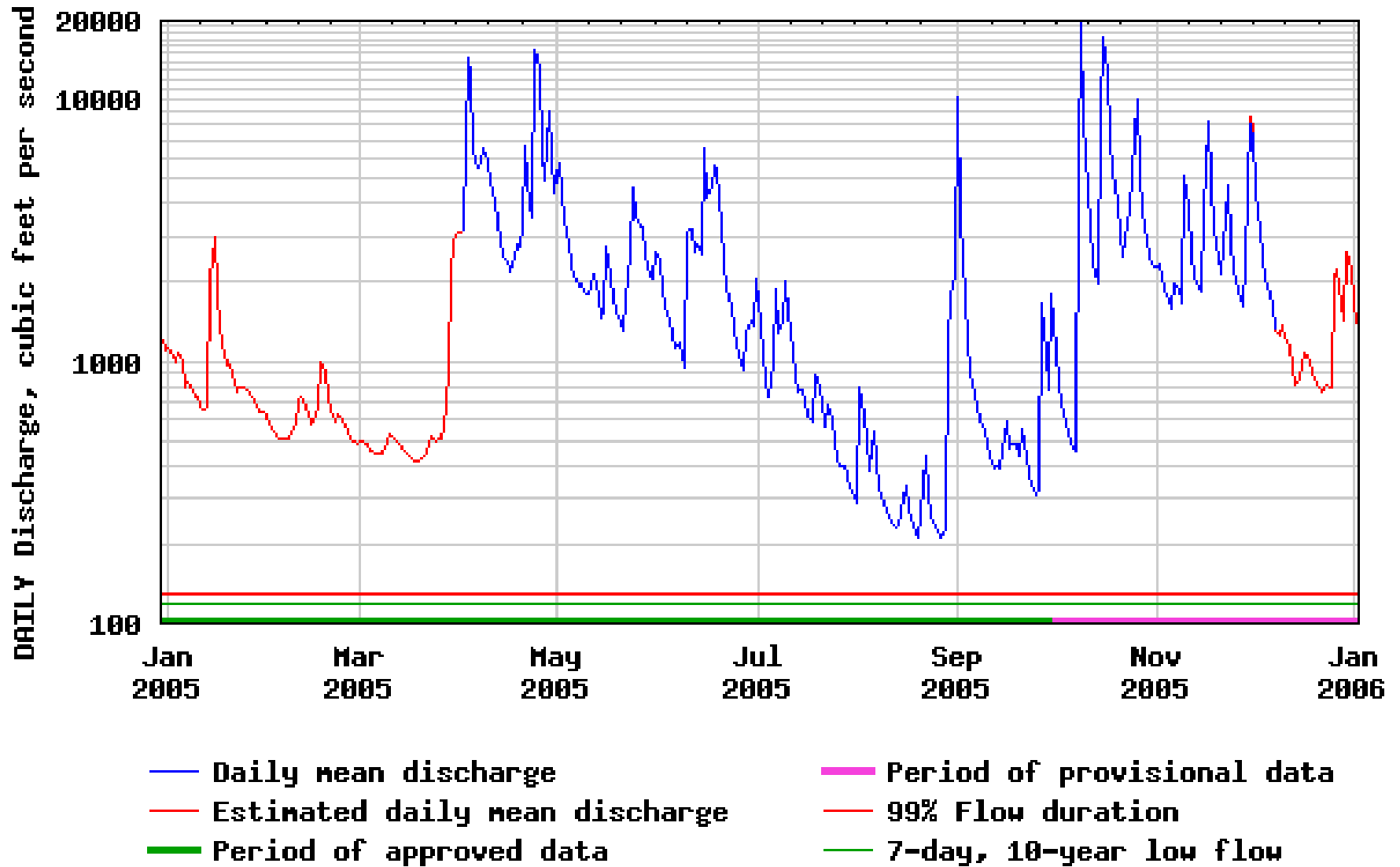
USGS 01073000 OYSTER RIVER NEAR DURHAM, NH



- Median daily statistic (70 years)
- Daily mean discharge
- Estimated daily mean discharge
- Period of approved data
- Period of provisional data
- 99% Flow duration
- 7-day, 10-year low flow

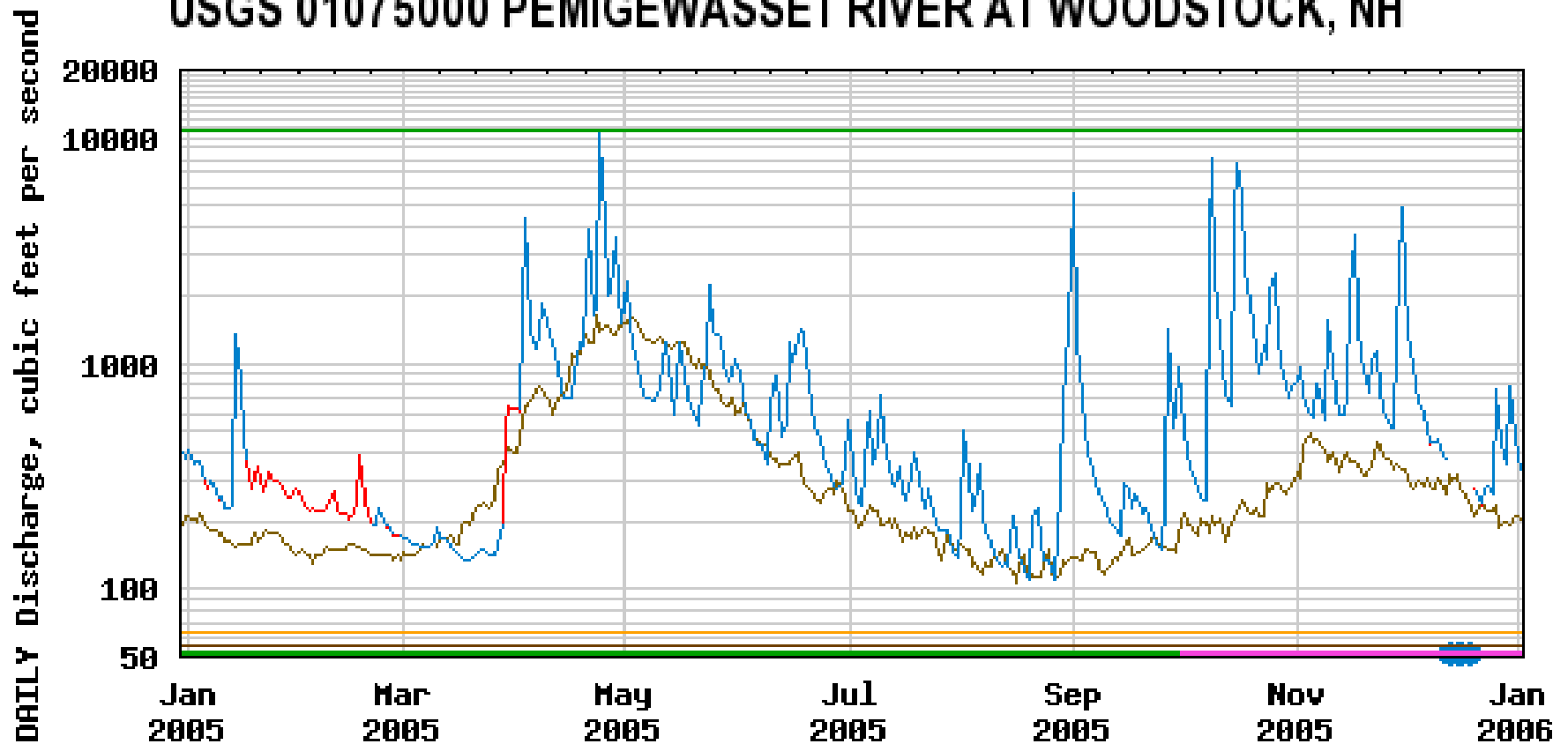


USGS 01076500 PEMIGEWASSET RIVER AT PLYMOUTH, NH





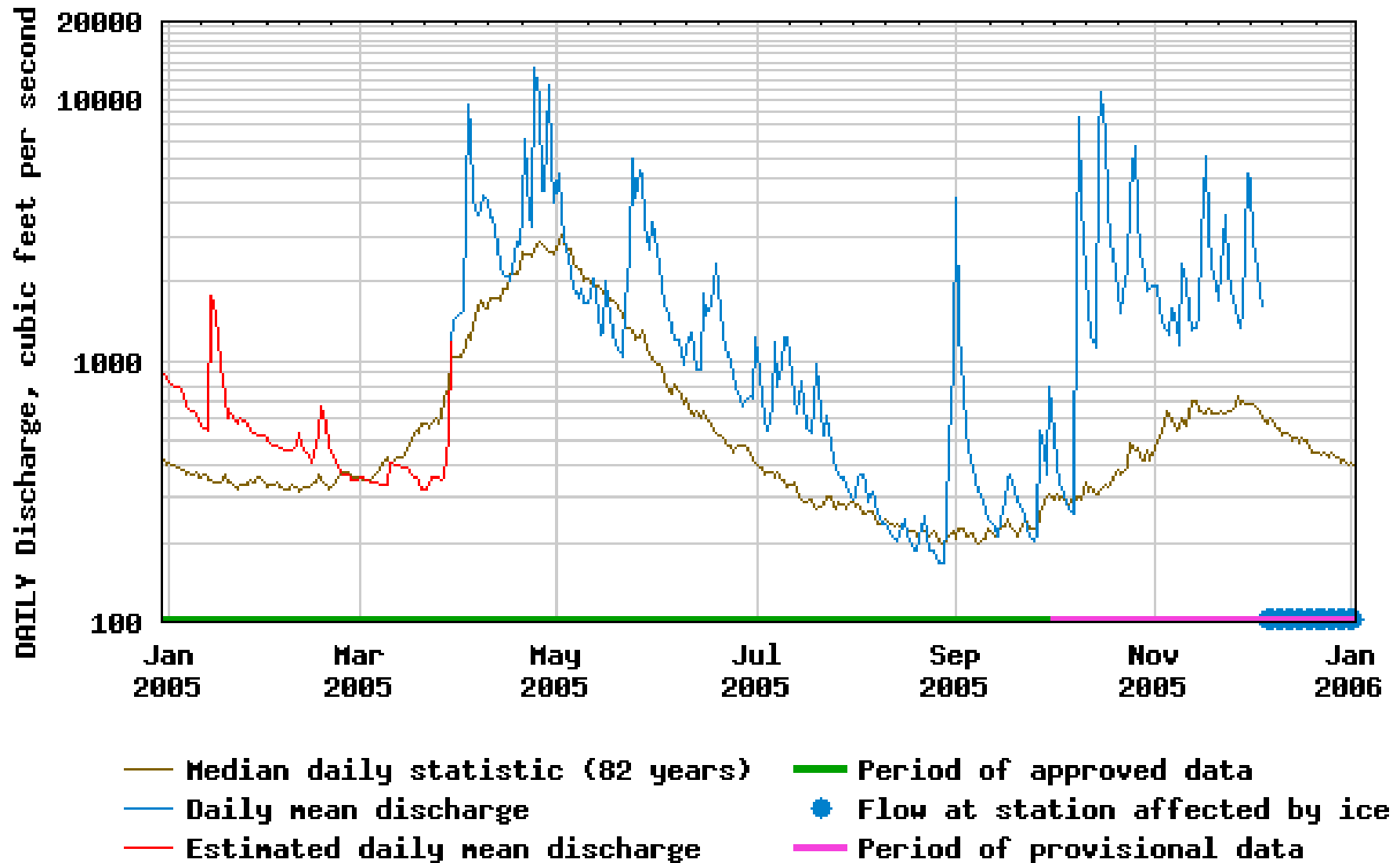
USGS 01075000 PEMIGEWASSET RIVER AT WOODSTOCK, NH



- Median daily statistic (41 years)
- Daily mean discharge
- Estimated daily mean discharge
- Period of approved data
- Flow at station affected by ice
- Period of provisional data
- 2-Year Recurrence Interval
- 99% Flow duration
- 7-day, 10-year low flow

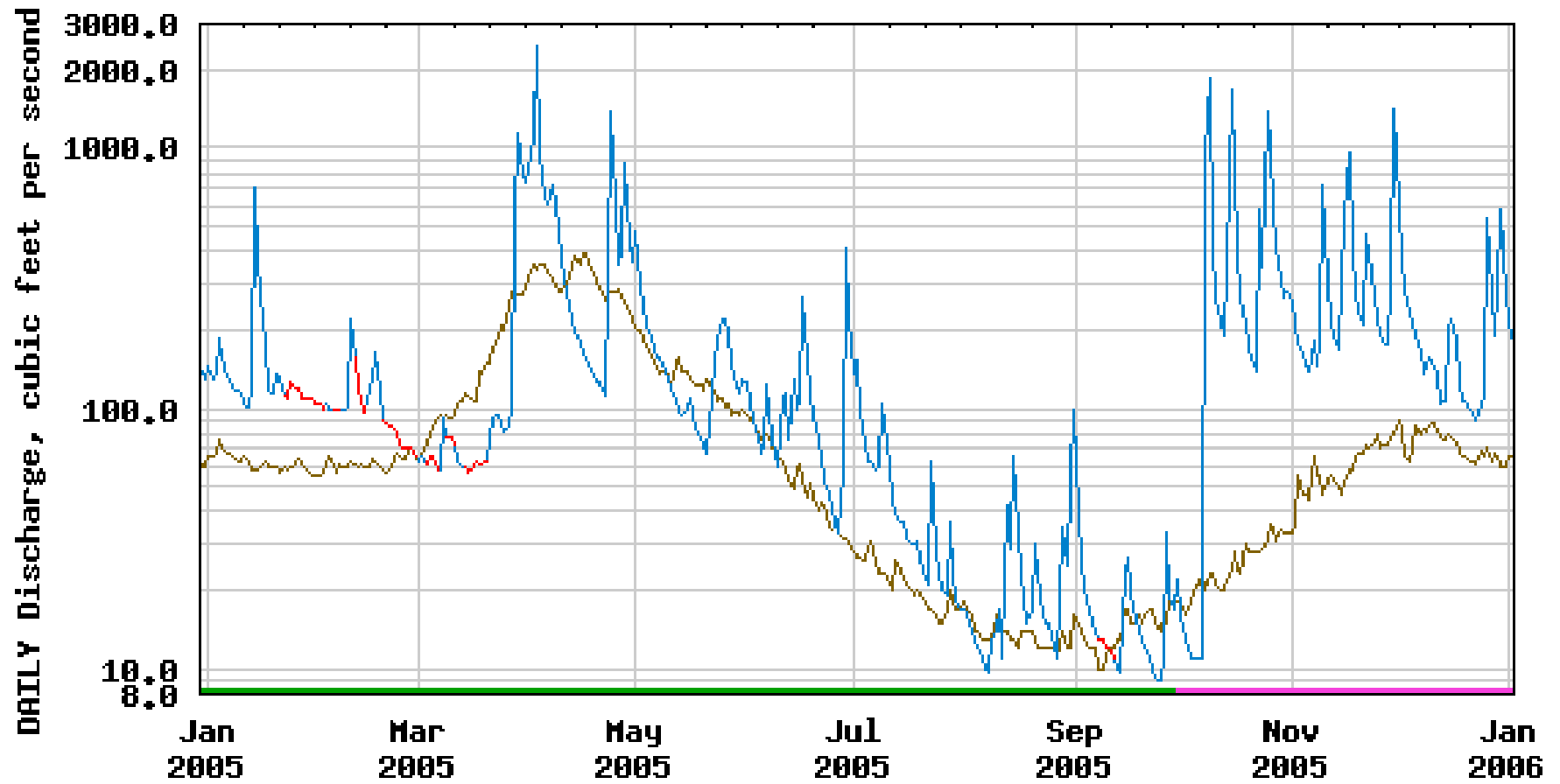


USGS 01064500 Saco River near Conway, NH





USGS 01154000 SAXTONS RIVER AT SAXTONS RIVER, VT



— Median daily statistic (46 years)

— Daily mean discharge

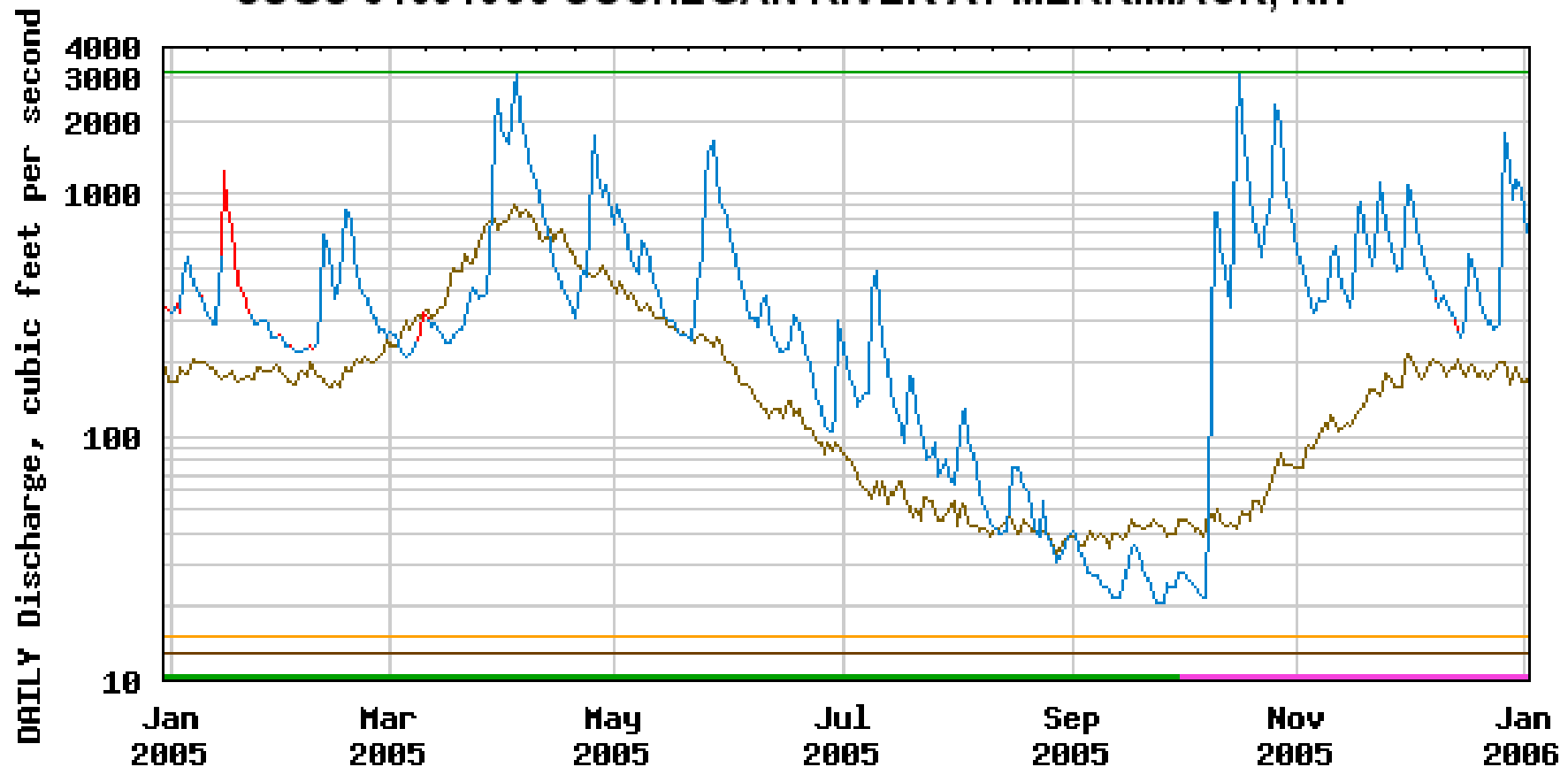
— Estimated daily mean discharge

— Period of approved data

— Period of provisional data



USGS 01094000 SOUHEGAN RIVER AT MERRIMACK, NH



— Median daily statistic (71 years)

— Daily mean discharge

— Estimated daily mean discharge

— Period of approved data

— Period of provisional data

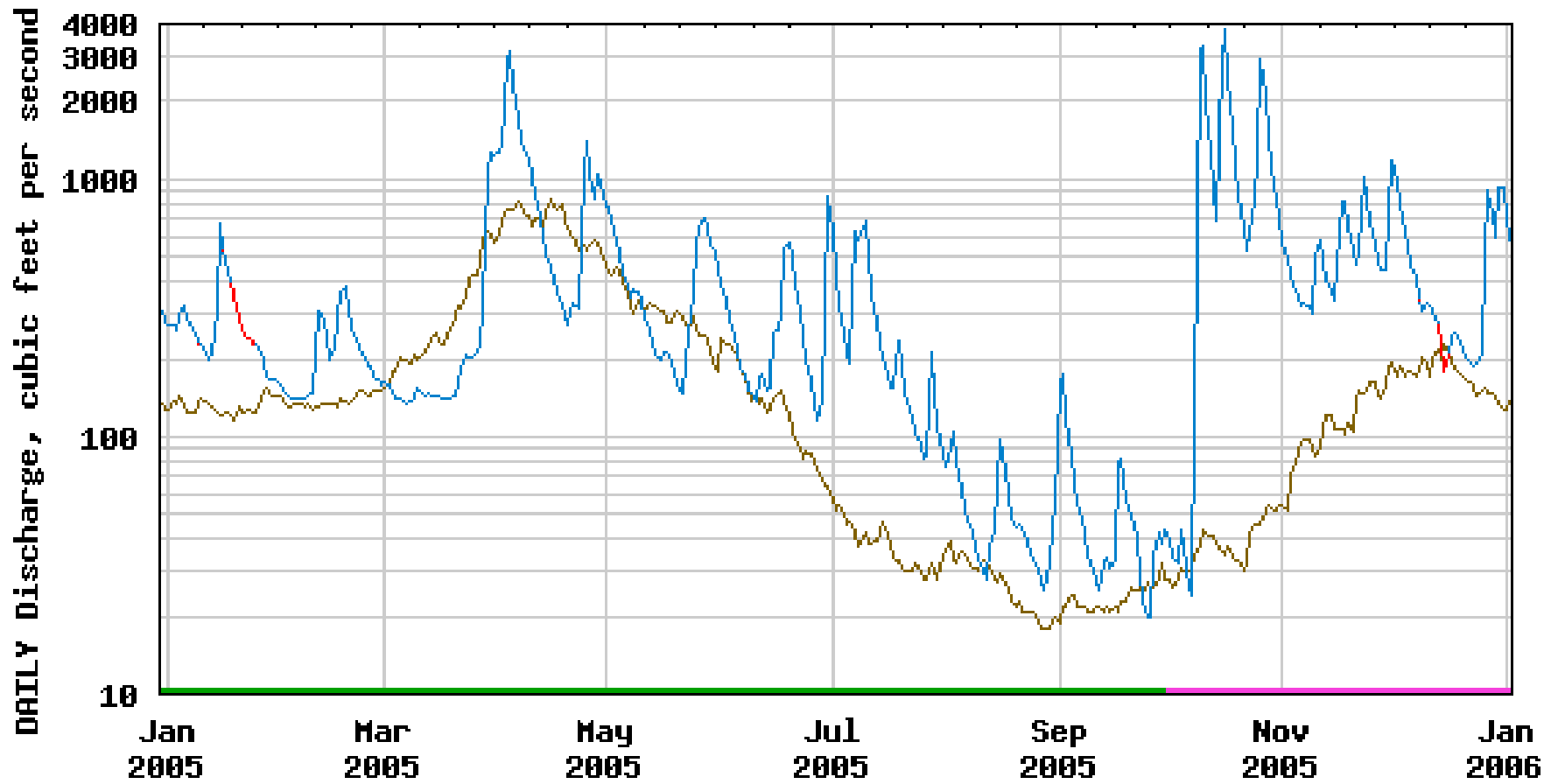
— 2-Year Recurrence Interval

— 99% Flow duration

— 7-day, 10-year low flow



USGS 01086000 WARNER RIVER AT DAVISVILLE, NH



— Median daily statistic (43 years)

— Daily mean discharge

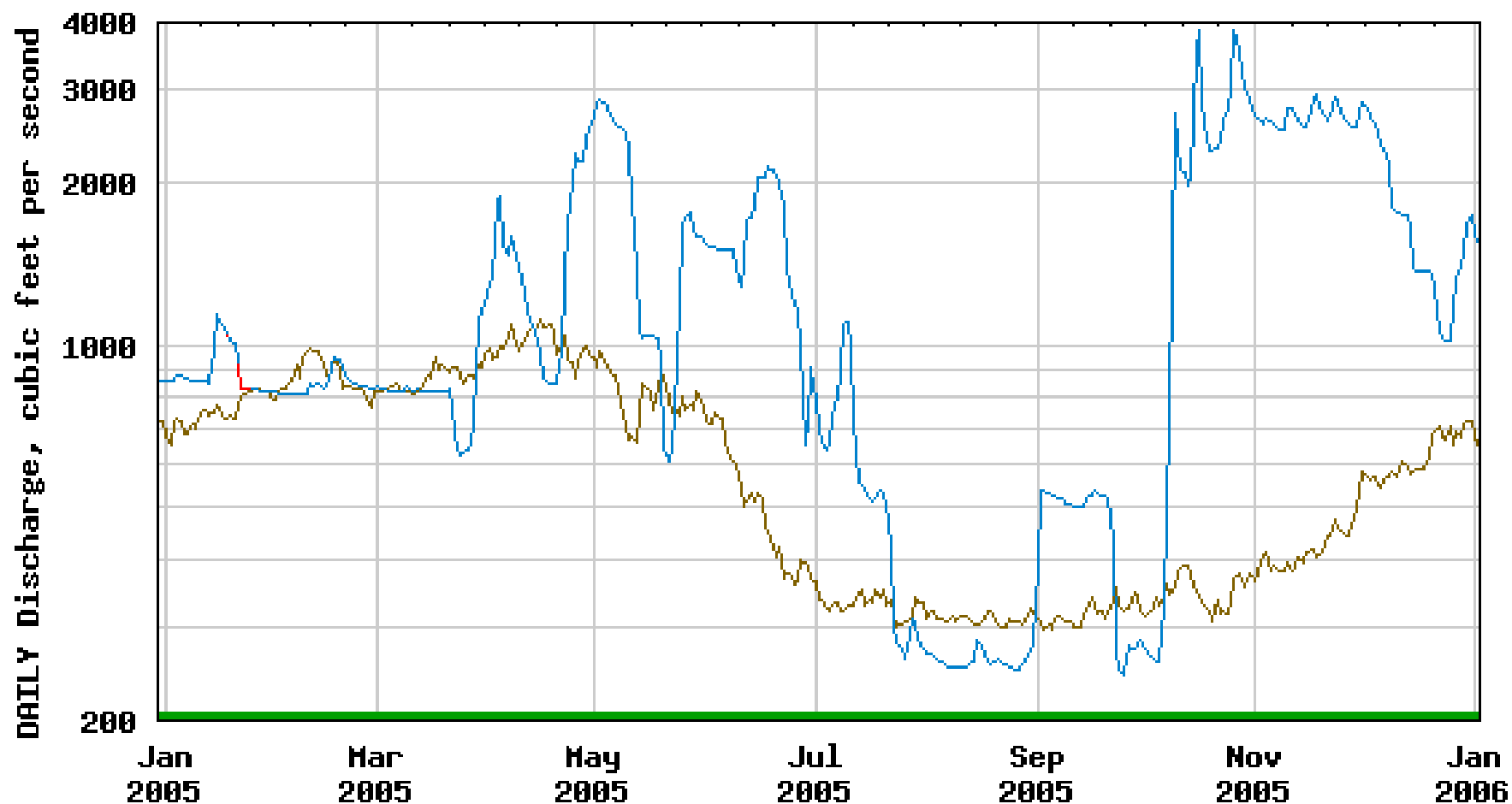
— Estimated daily mean discharge

— Period of approved data

— Period of provisional data



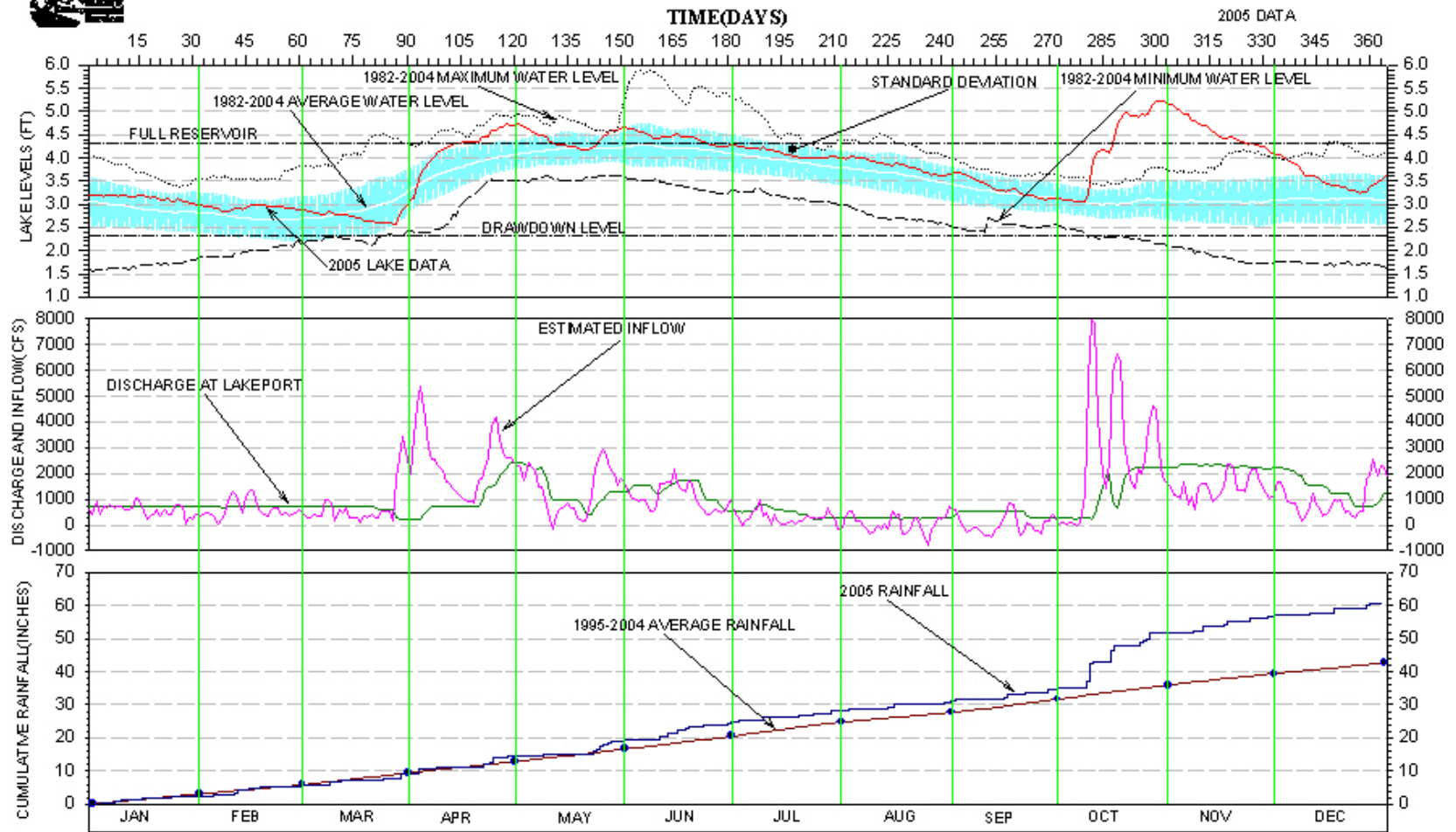
USGS 01081000 WINNIPESAUKEE RIVER AT TILTON, NH



- Median daily statistic (69 years)
- Estimated daily mean discharge
- Daily mean discharge
- Period of approved data



LAKE WINNIPESAUKEE LAKE LEVEL OPERATING RANGE



PROJECT DEVELOPMENT-EK
WINPRESENTATION.JWB

TIME (MONTHS)

Updated 12/31/2005. LAKE LEVEL 503.63'. FULL LAKE 504.32'.